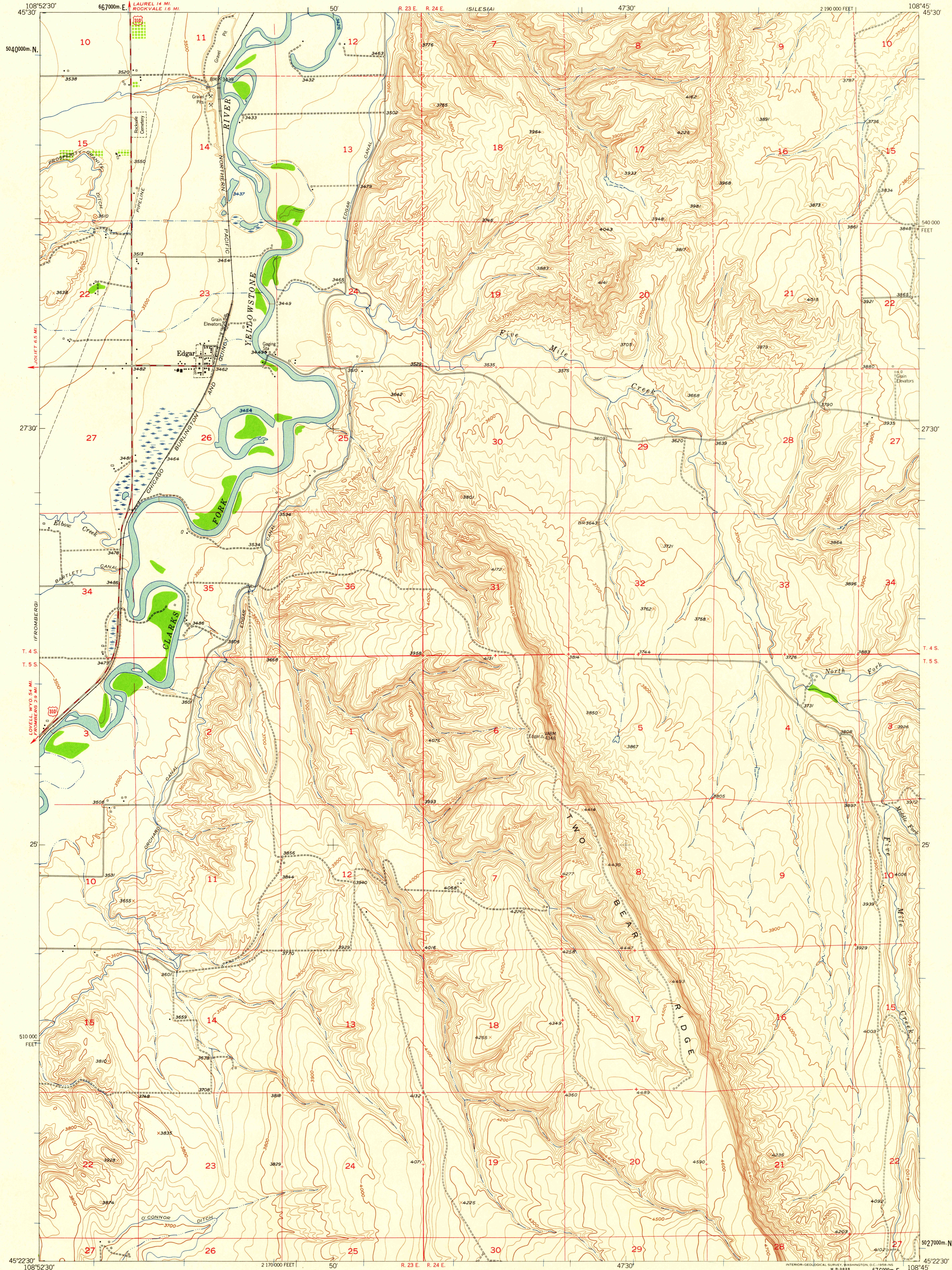


UNITED STATES
DEPARTMENT OF THE INTERIOR
GEOLOGICAL SURVEY

EDGAR QUADRANGLE
MONTANA-CARBON CO.
7.5 MINUTE SERIES (TOPOGRAPHIC)

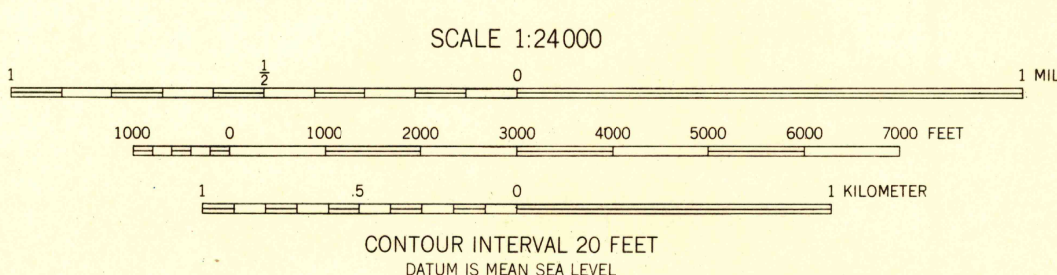
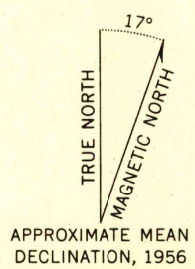


Mapped, edited, and published by the Geological Survey
as part of the Department of the Interior program
for the development of the Missouri River Basin
Control by USGS and USC&GS

Topography from aerial photographs by photogrammetric
methods 1947 for the Bureau of Reclamation and by
multiplex methods 1954 by the Geological Survey
Aerial photographs taken 1951. Field check 1956

Polyconic projection. 1927 North American datum
10,000-foot grid based on Montana coordinate system,
south zone
1000-meter Universal Transverse Mercator grid ticks,
zone 12, shown in blue

Dashed land lines indicate approximate locations



ROAD CLASSIFICATION
Medium-duty ——— Light-duty ———
Unimproved dirt ———
U.S. Route

USGS
Historical File
Topographic Division

U.S.G.S.
FILE COPY
TOPOGRAPHIC DIVISION

EDGAR, MONT.
N4522.5-W10845/7.5
1956

SEP 25 1956

1800