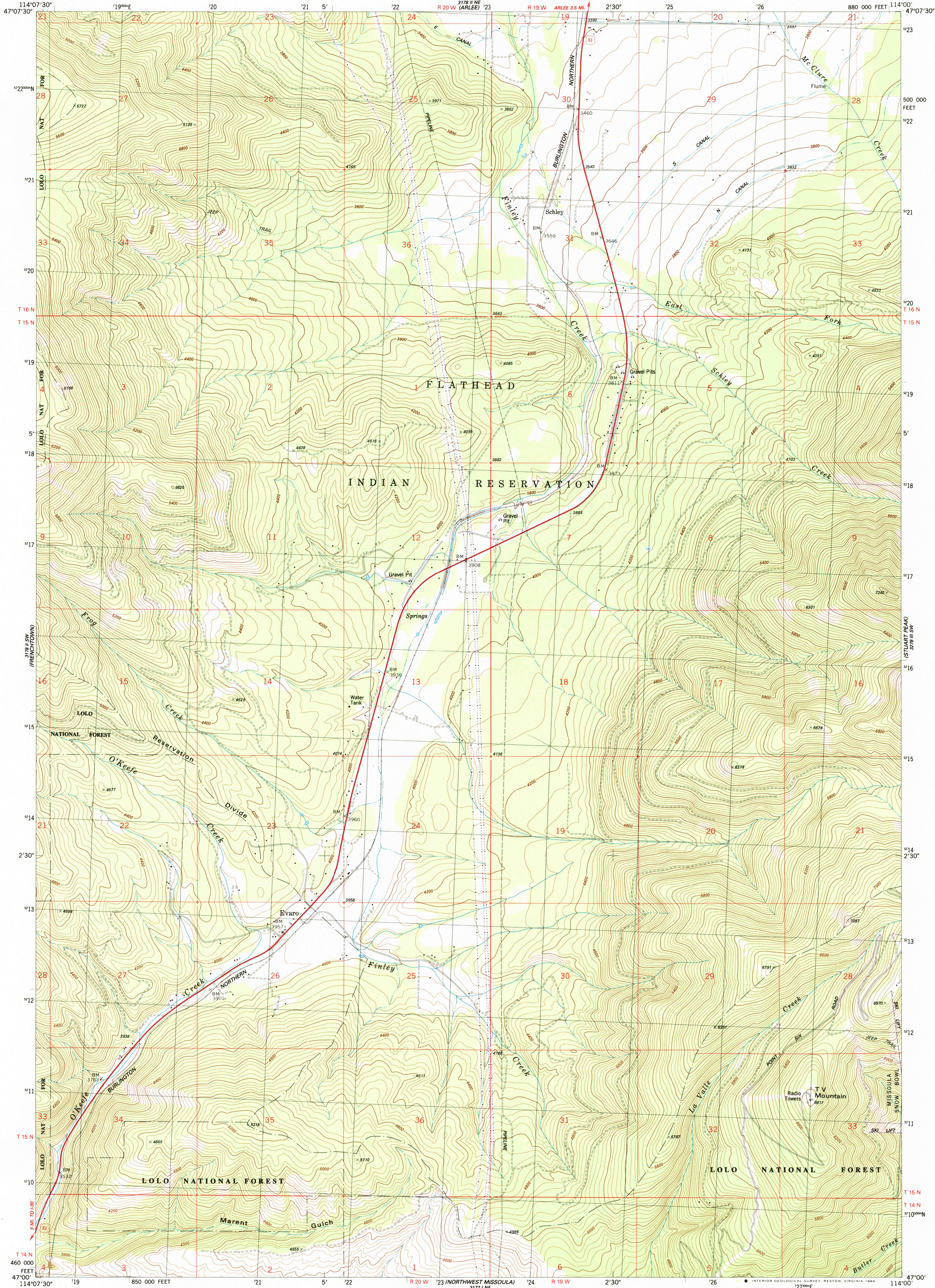


UNITED STATES
DEPARTMENT OF THE INTERIOR
GEOLOGICAL SURVEY

EVARO QUADRANGLE
MONTANA-MISSOULA CO.
7.5 MINUTE SERIES (TOPOGRAPHIC)
SE/4 ARLEE 15' QUADRANGLE



Mapped, edited, and published by the Geological Survey

Control by USGS and NOS/NOAA

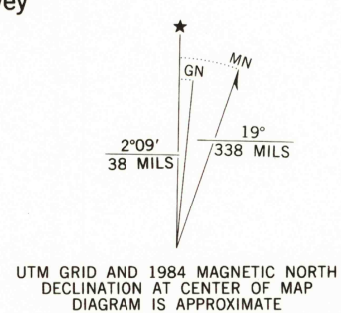
Topography by photogrammetric methods from aerial photographs taken 1956. Field checked 1959. Revised from aerial photographs taken 1980. Field checked 1981. Map edited 1984

Projection and 10,000-foot grid ticks: Montana coordinate system, central zone (Lambert conformal conic) 1000-meter Universal Transverse Mercator grid, zone 11 1927 North American Datum

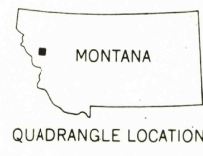
To place on the predicted North American Datum 1983 move the projection lines 12 meters north and 70 meters east as shown by dashed corner ticks

Fine red dashed lines indicate selected fence lines

There may be private inholdings within the boundaries of the National or State reservations shown on this map



THIS MAP COMPLIES WITH NATIONAL MAP ACCURACY STANDARDS
FOR SALE BY U. S. GEOLOGICAL SURVEY, DENVER, COLORADO 80225, OR RESTON, VIRGINIA 22092
A FOLDER DESCRIBING TOPOGRAPHIC MAPS AND SYMBOLS IS AVAILABLE ON REQUEST



QUADRANGLE LOCATION

ROAD CLASSIFICATION	
Primary highway, hard surface	Light-duty road, hard or improved surface
Secondary highway, hard surface	Unimproved road
Interstate Route	U. S. Route
	State Route

EVARO, MONT.
SE/4 ARLEE 15' QUADRANGLE
47114-A1-TF-024

1984

DMA 3178 II SE-SERIES V894

RETURN TO:
USGS NHD HISTORICAL MAP ARCHIVES