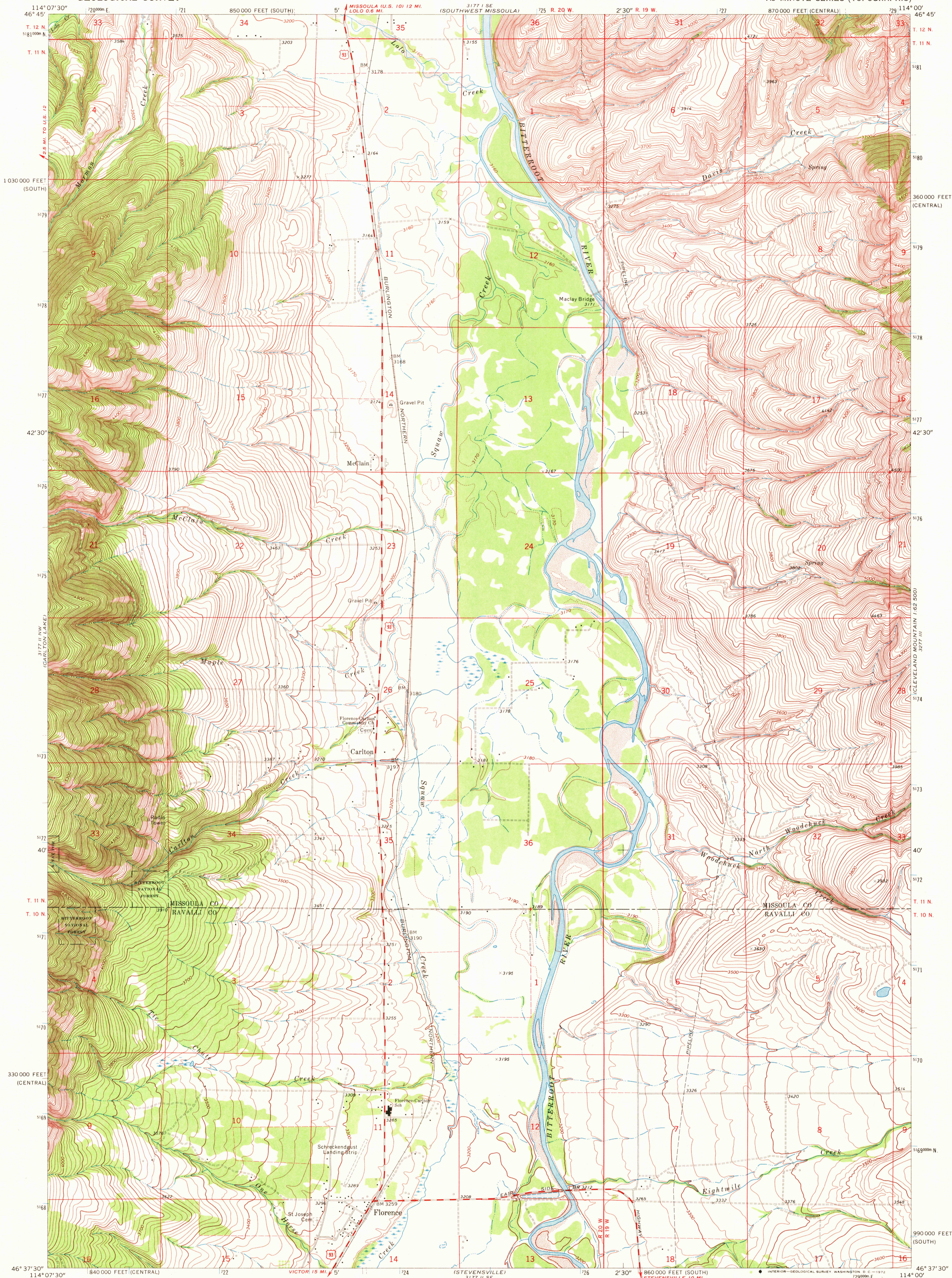


UNITED STATES
DEPARTMENT OF THE INTERIOR
GEOLOGICAL SURVEY

FLORENCE QUADRANGLE
MONTANA
7.5 MINUTE SERIES (TOPOGRAPHIC)

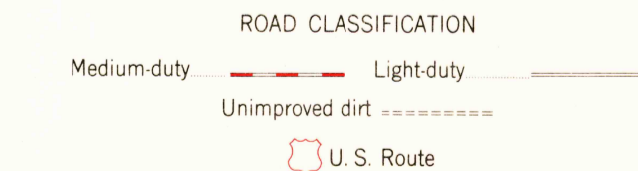
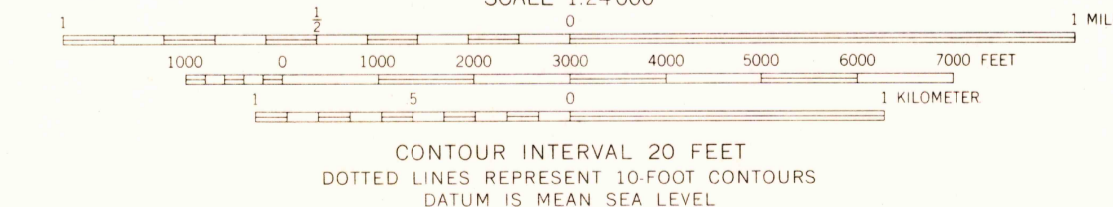
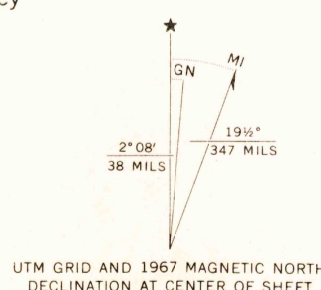


Mapped, edited, and published by the Geological Survey

Control by USGS and USC&GS

Topography by photogrammetric methods from aerial photographs taken 1966. Field checked 1967

Polyconic projection. 1927 North American datum
10,000-foot grids based on Montana coordinate system,
central and south zones
1000-meter Universal Transverse Mercator grid ticks,
zone 11, shown in blue
Fine red dashed lines indicate selected fence lines



USGS
HISTORICAL FILE
TOPOGRAPHIC DIVISION

FLORENCE, MONT.
N4637.5-W11400.7.5

1967

AMS 3177 II NE—SERIES V894

JAN 11 1972