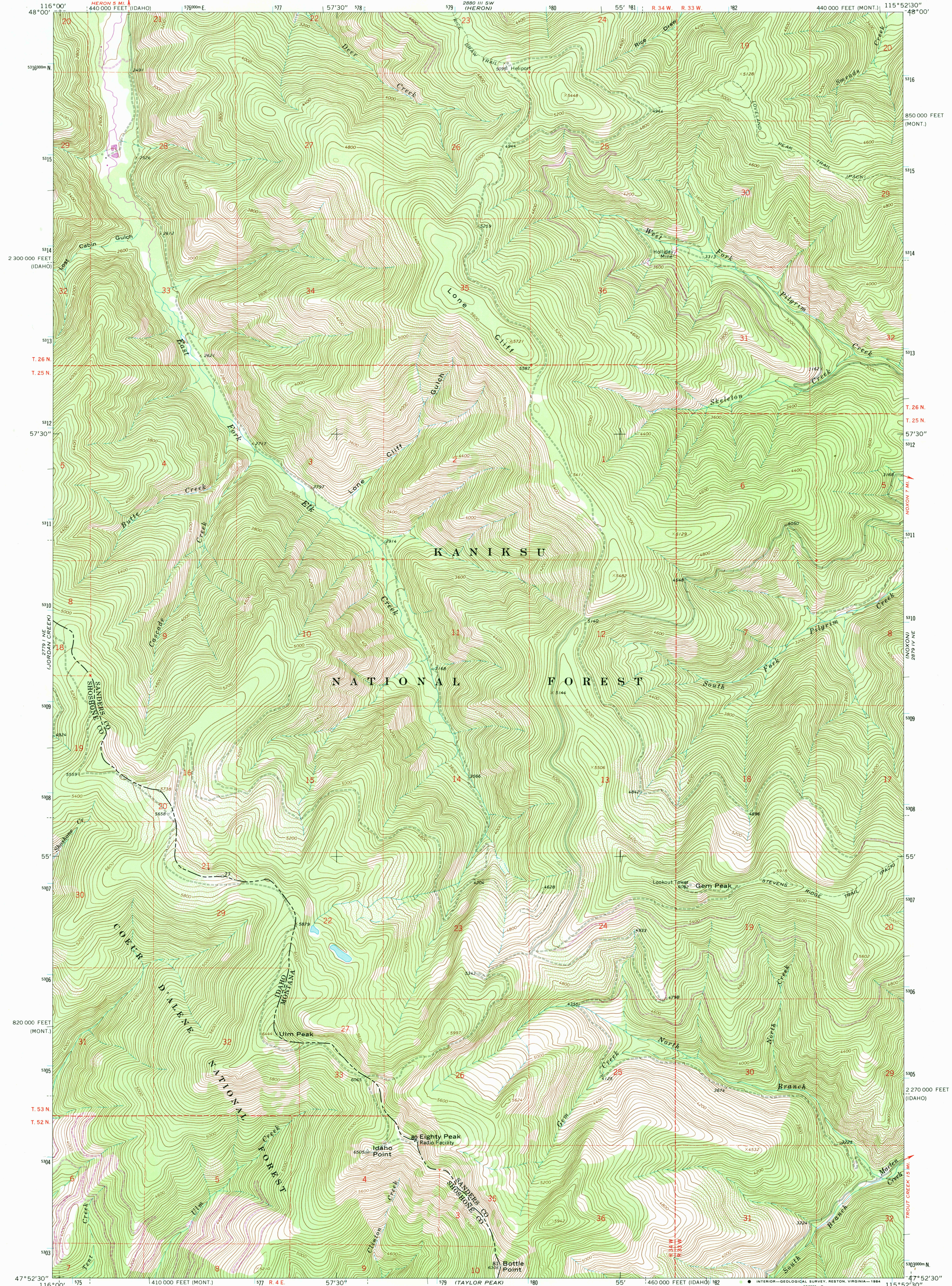


CLARK (Core)  
2 380 1.00  
1.16 500

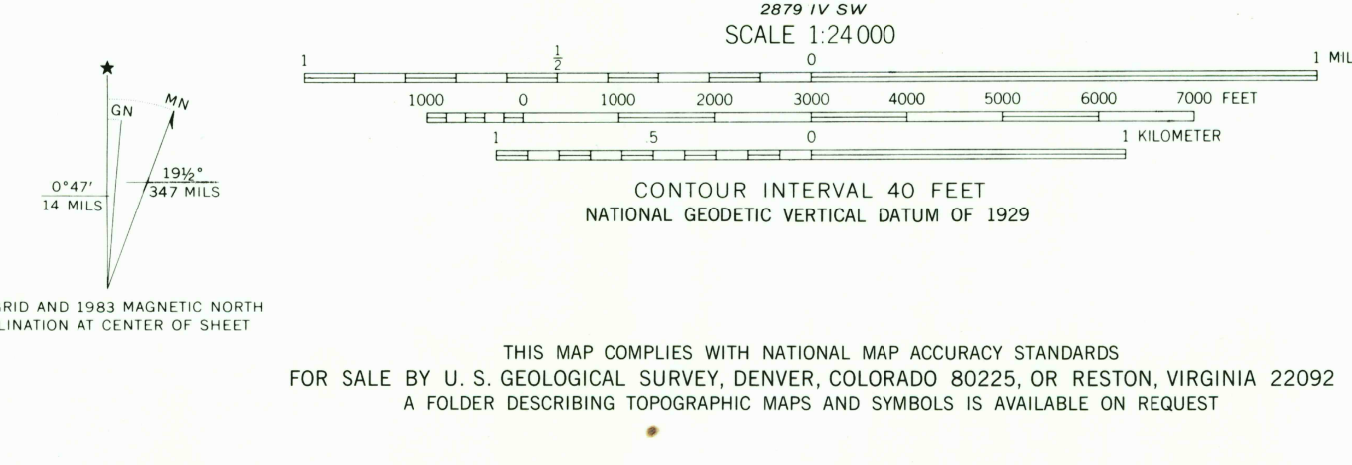
UNITED STATES  
DEPARTMENT OF THE INTERIOR  
GEOLOGICAL SURVEY

GEM PEAK QUADRANGLE  
MONTANA-IDAHO  
7.5 MINUTE SERIES (TOPOGRAPHIC)

2880 1.00  
1.16 500  
1.16 500



Maped, edited, and published by the Geological Survey  
Control by USGS and NOS/NOAA  
Topography by photogrammetric methods from aerial  
photographs taken 1965. Field checked 1966  
Polyconic projection: 1927 North American Datum  
10,000-foot grids based on Montana coordinate system,  
central zone and Idaho coordinate system, west zone  
1000-meter Universal Transverse Mercator grid ticks,  
zone 11, shown in blue  
There may be private inholdings within the boundaries  
of the National or State reservations shown on this map  
To place on the predicted North American Datum 1983  
move the projection lines 13 meters north and  
75 meters east as shown by dashed corner ticks



ROAD CLASSIFICATION  
Light-duty ————— Unimproved dirt —————  
QUADRANGLE LOCATION  
GEM PEAK, MONT.-IDAHO  
47115-H8-TF-024  
1966  
PHOTOREVISED 1983  
DMA 2879 IV NW-SERIES V894  
Revisions shown in purple and woodland  
compiled from aerial photographs taken 1982  
and other source data. Partial field check  
by U.S. Forest Service. Map edited 1983  
THIS MAP COMPLIES WITH NATIONAL MAP ACCURACY STANDARDS  
FOR SALE BY U. S. GEOLOGICAL SURVEY, DENVER, COLORADO 80225, OR RESTON, VIRGINIA 22092  
A FOLDER DESCRIBING TOPOGRAPHIC MAPS AND SYMBOLS IS AVAILABLE ON REQUEST  
RETURN TO:  
USGS AND HISTORICAL MAP ARCHIVES