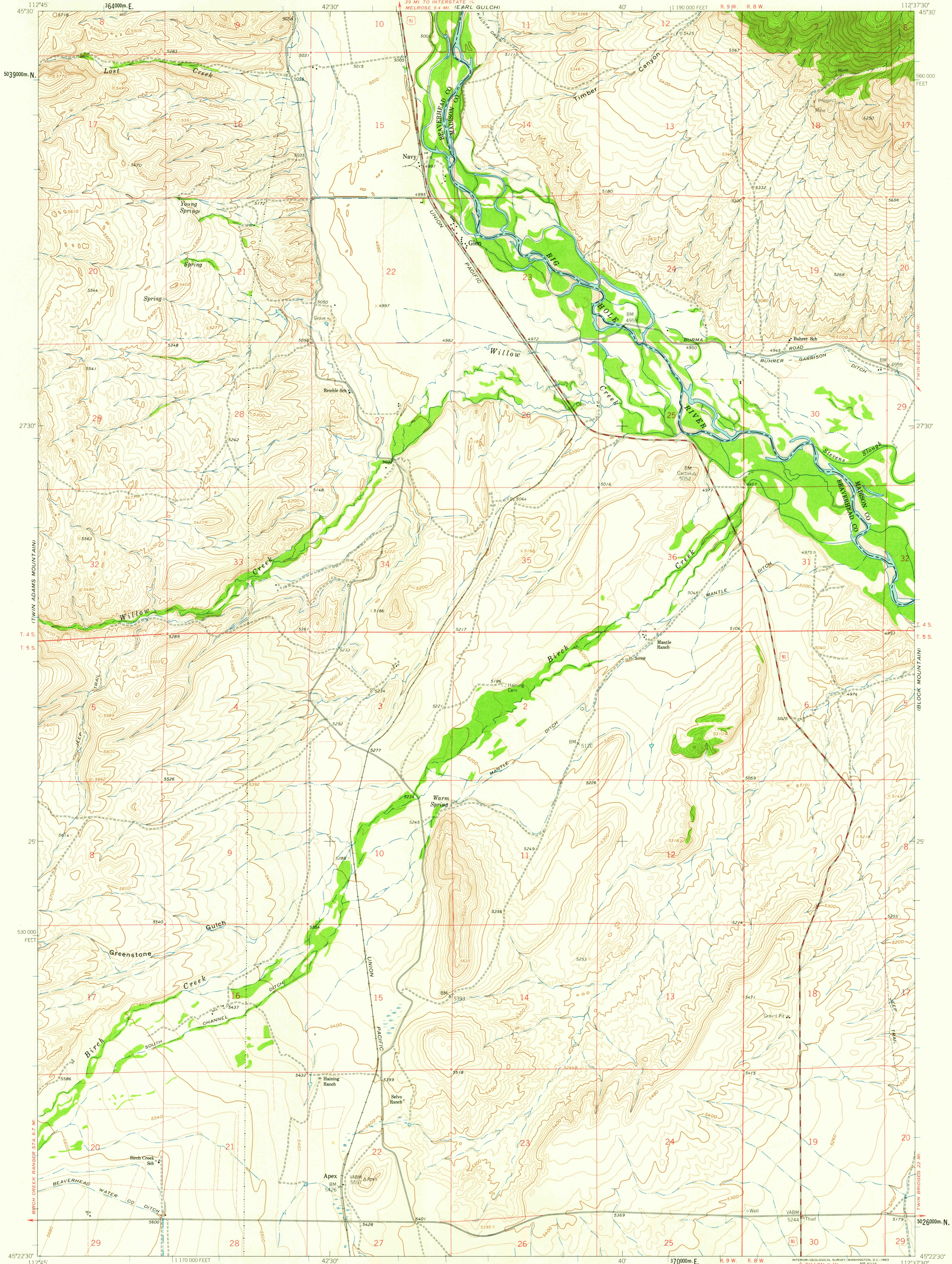


UNITED STATES
DEPARTMENT OF THE INTERIOR
GEOLOGICAL SURVEY

GLEN QUADRANGLE
MONTANA
7.5 MINUTE SERIES (TOPOGRAPHIC)



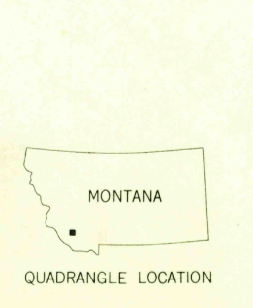
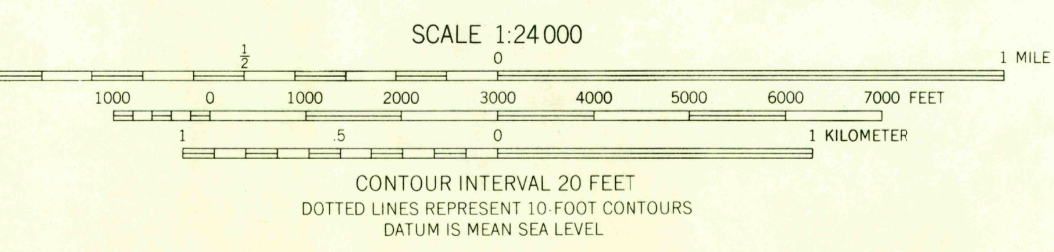
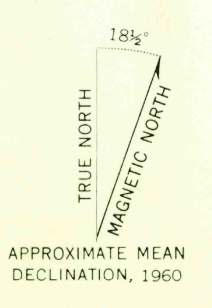
Mapped, edited, and published by the Geological Survey
as part of the Department of the Interior program
for the development of the Missouri River Basin

Control by USGS and USC&GS
Topography by photogrammetric methods from aerial
photographs taken 1959. Field checked 1960

Polyconic projection. 1927 North American datum
10,000-foot grid based on Montana coordinate system,
south zone

1000-meter Universal Transverse Mercator grid ticks,
zone 12, shown in blue

Fine red dashed lines indicate selected fence and field lines where
generally visible on aerial photographs. This information is uncheckd



ROAD CLASSIFICATION
Medium duty ——— Light-duty ———
Unimproved dirt ———
U.S. Route

USGS
Historical File
Topographic Division

GLEN, MONT.
N4522 5 - W11237 5/7.5

1960
TOPOGRAPHIC DIVISION

THIS MAP COMPLIES WITH NATIONAL MAP ACCURACY STANDARDS
FOR SALE BY U.S. GEOLOGICAL SURVEY, DENVER 25, COLORADO OR WASHINGTON 25, D.C.
A FOLDER DESCRIBING TOPOGRAPHIC MAPS AND SYMBOLS IS AVAILABLE ON REQUEST

MAP 2-5-1963