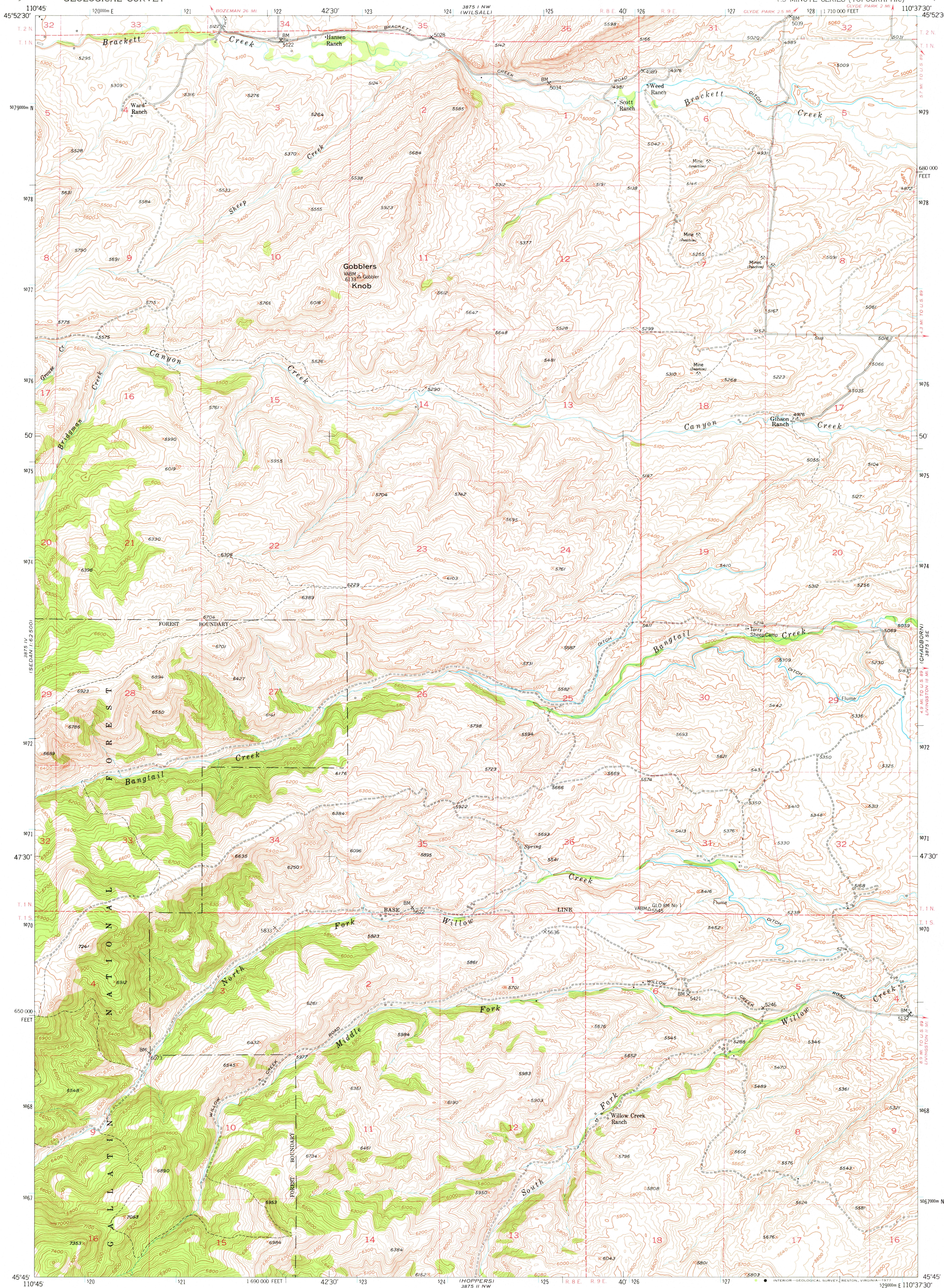
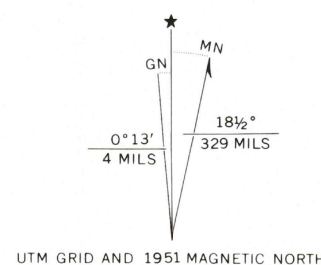


UNITED STATES
DEPARTMENT OF THE INTERIOR
GEOLOGICAL SURVEY

GOBBLERS KNOB QUADRANGLE
MONTANA-PARK CO.
7.5 MINUTE SERIES (TOPOGRAPHIC)



Mapped, edited, and published by the Geological Survey
as part of the Department of the Interior program
for the development of the Missouri River Basin
Control by USGS and USC&GS
Topography from aerial photographs by multiplex methods
Aerial photographs taken 1948. Field check 1951
Polyconic projection. 1927 North American datum
10,000-foot grid based on Montana coordinate system,
south zone
1000-meter Universal Transverse Mercator grid ticks,
zone 12, shown in blue
Dashed land lines indicate approximate locations
National forest boundaries represent proclamation lines
and do not necessarily imply Federal jurisdiction



SCALE 1:24,000
1 0 1000 2000 3000 4000 5000 6000 7000 FEET
1 0 1 2 3 4 5 6 7 8 9 10 KILOMETER
CONTOUR INTERVAL 20 FEET
NATIONAL GEODETIC VERTICAL DATUM OF 1929



QUADRANGLE LOCATION

ROAD CLASSIFICATION
Heavy-duty 4 LANE 6 LANE Light-duty
Medium-duty 4 LANE 6 LANE Unimproved dirt
U.S. Route State Route

GOBBLERS KNOB, MONT.
N4545-W11037 5/7.5

USGS
Historical File
Topographic Division

1951
AMS 3875 1 SW - SERIES V894

APR 13 1977

1500