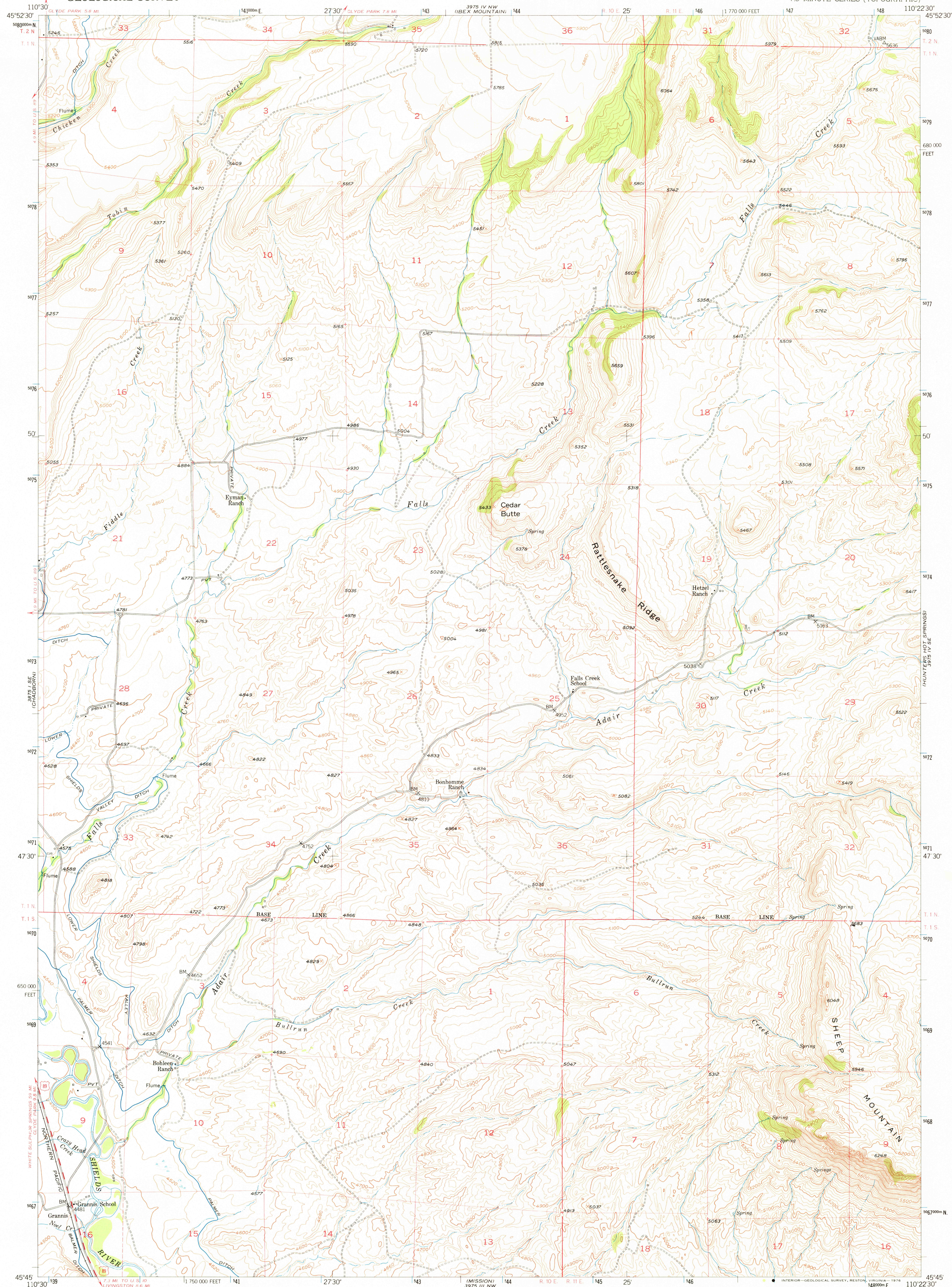
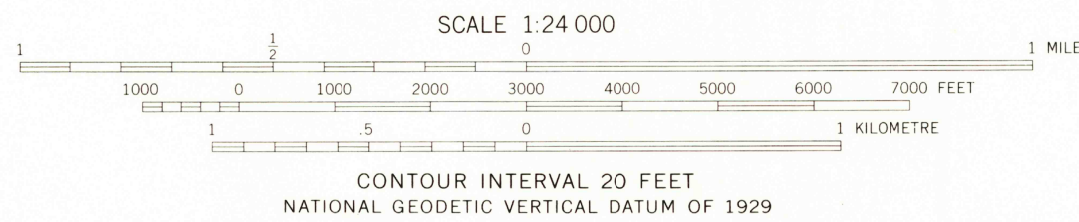
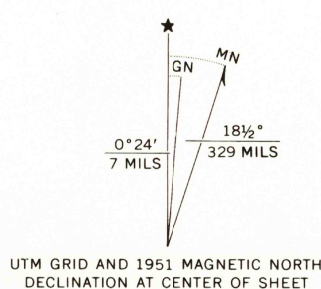


UNITED STATES
DEPARTMENT OF THE INTERIOR
GEOLOGICAL SURVEY

GRANNIS QUADRANGLE
MONTANA-PARK CO.
7.5 MINUTE SERIES (TOPOGRAPHIC)



Mapped, edited, and published by the Geological Survey as part of the Department of the Interior program for the development of the Missouri River Basin Control by USGS and USC&GS
Topography from aerial photographs by multiplex methods by Ryall Engineering Co. Aerial photographs taken 1948 Field check 1951
Polyconic projection. 1927 North American datum 10,000-foot grid based on Montana coordinate system, south zone
Dashed land lines indicate approximate locations 1000-metre Universal Transverse Mercator grid ticks, zone 12, shown in blue



ROAD CLASSIFICATION
Heavy-duty 4 LANE 16 LANE Light-duty
Medium-duty 4 LANE 16 LANE Unimproved dirt
U. S. Route State Route

USGS
Historical File
Topographic Division

GRANNIS, MONT.
N4545-W10225/7.5
1951

AMS 3975 IV SW-SERIES V894

AUG 1 1 1976