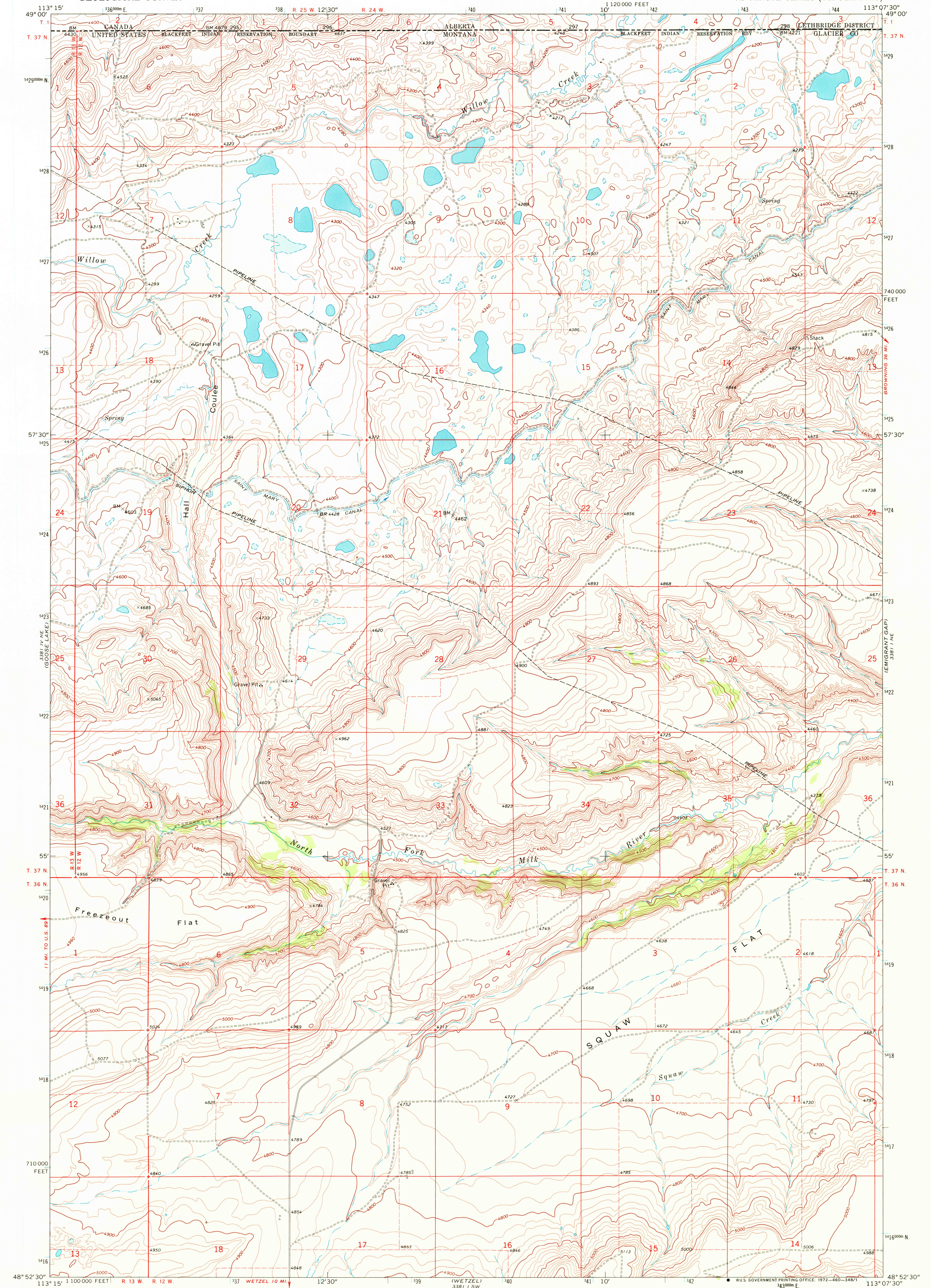
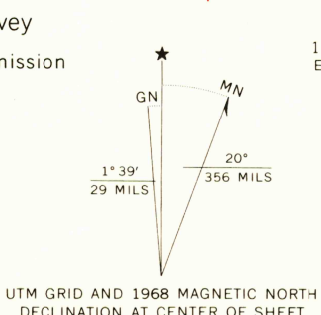


UNITED STATES
DEPARTMENT OF THE INTERIOR
GEOLOGICAL SURVEY

HALL COULEE QUADRANGLE
MONTANA—ALBERTA
7.5 MINUTE SERIES (TOPOGRAPHIC)

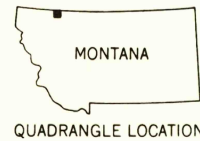


Maped, edited, and published by the Geological Survey
Control by USGS, USC&GS and International Boundary Commission
Topography by photogrammetric methods from aerial
photographs taken 1966. Field checked 1968.
Polyconic projection. 1927 North American datum
10,000-foot grid based on Montana coordinate system,
north zone
1000-meter Universal Transverse Mercator grid ticks,
zone 12, shown in blue
Fine red dashed lines indicate selected fence lines
Dotted land lines established by
Department of the Interior, Canada



THIS MAP COMPLIES WITH NATIONAL MAP ACCURACY STANDARDS
FOR SALE BY U. S. GEOLOGICAL SURVEY, DENVER, COLORADO 80225, OR WASHINGTON, D. C. 20242
A FOLDER DESCRIBING TOPOGRAPHIC MAPS AND SYMBOLS IS AVAILABLE ON REQUEST

ROAD CLASSIFICATION
Light-duty road, all weather, Unimproved road, fair or dry weather
Improved surface weather



HALL COULEE, MONT.—ALTA.
N4852.5—W11307.5/7.5

1968
AMS 3381 I NW—SERIES V894

USGS
HISTORICAL FILE
TOPOGRAPHIC DIVISION

DEC 20 1972

R. 1000
2000