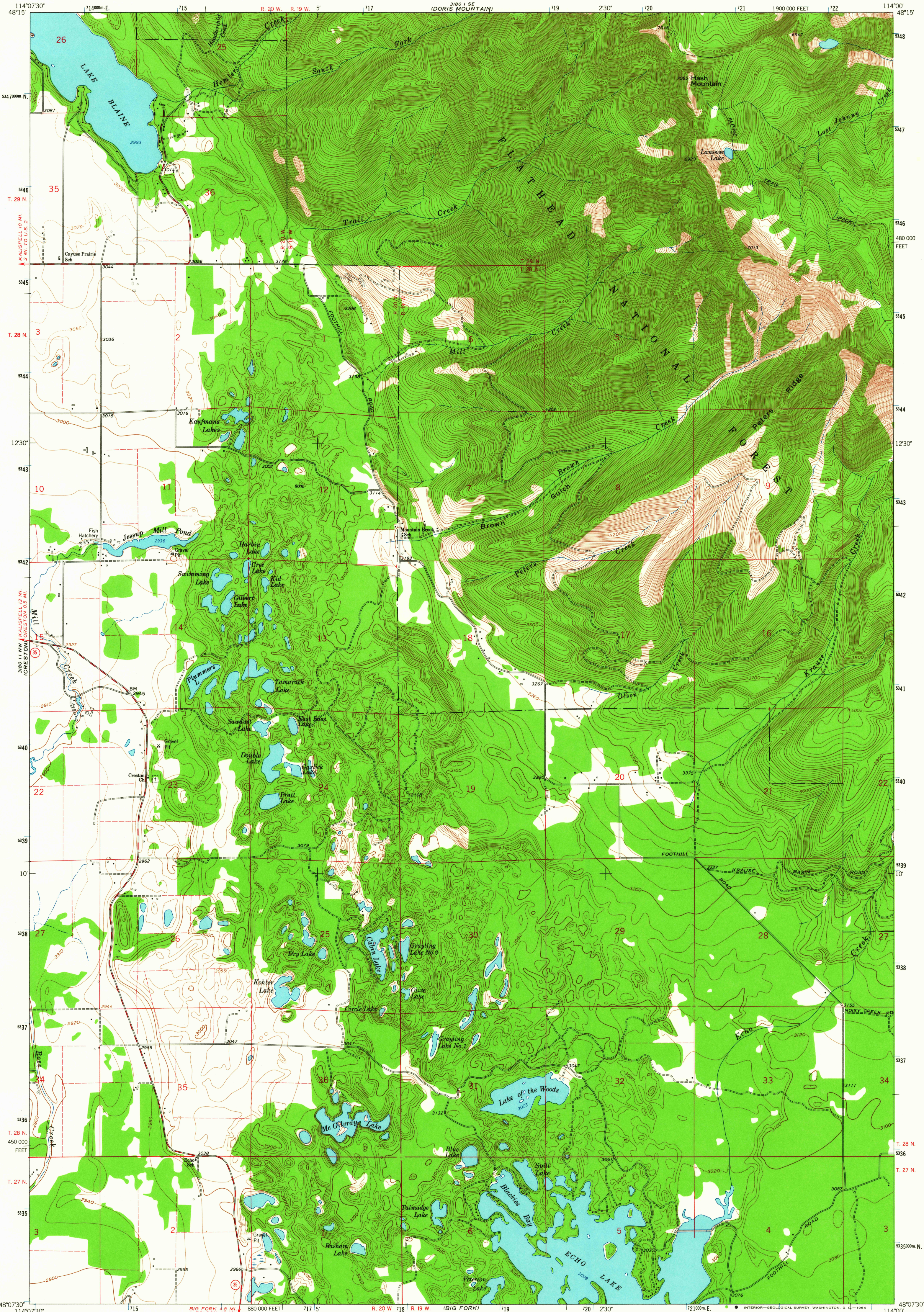


UNITED STATES
DEPARTMENT OF THE INTERIOR
GEOLOGICAL SURVEY

HASH MOUNTAIN QUADRANGLE
MONTANA-FLATHEAD CO.
7.5 MINUTE SERIES (TOPOGRAPHIC)



Mapped, edited, and published by the Geological Survey

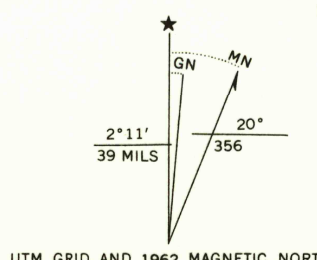
Control by USGS and USC&GS

Topography by photogrammetric methods from aerial photographs taken 1956. Field checked 1962

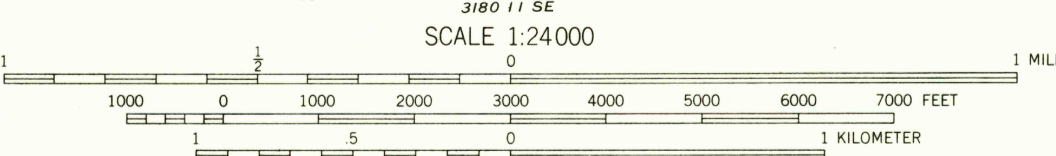
Polyconic projection. 1927 North American datum. 10,000-foot grid based on Montana coordinate system, north zone. 1000-meter Universal Transverse Mercator grid ticks, zone 11, shown in blue.

Fine red dashed lines indicate selected fence lines.

Where omitted, land lines have not been established.



UTM GRID AND 1962 MAGNETIC NORTH DECLINATION AT CENTER OF SHEET



SCALE 1:24,000

CONTOUR INTERVAL 20 FEET

DOTTED LINES REPRESENT 10-FOOT CONTOURS

DATUM IS MEAN SEA LEVEL



QUADRANGLE LOCATION

ROAD CLASSIFICATION
Medium-duty ——— Light-duty ———
Unimproved dirt ———
State Route

HASH MOUNTAIN, MONT.
N4807.5-W11400/7.5

1962

AMS 3180 11 NE-SERIES V894

USCS
Historical File
Topographic Division

3090
U.S.G.S.
FILE COPY
TOPOGRAPHIC DIVISION

JUN 16 1964