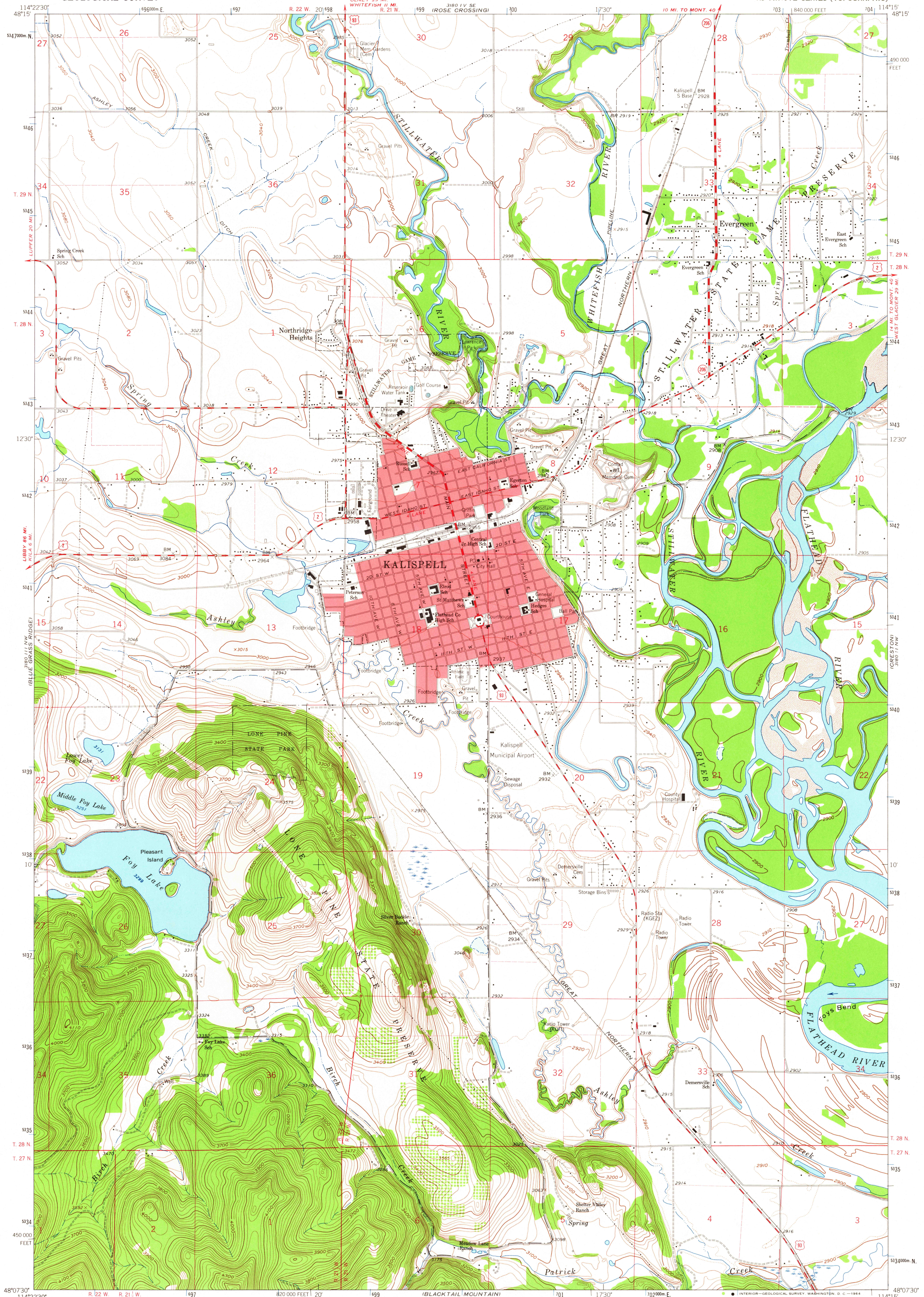


380 1/2 SW
114° 22' 30"

UNITED STATES
DEPARTMENT OF THE INTERIOR
GEOLOGICAL SURVEY

KALISPELL QUADRANGLE
MONTANA-FLATHEAD CO.
7.5 MINUTE SERIES (TOPOGRAPHIC)

380 1/2 SW
114° 15' W
COLUMBIA FALLS
SOUTH



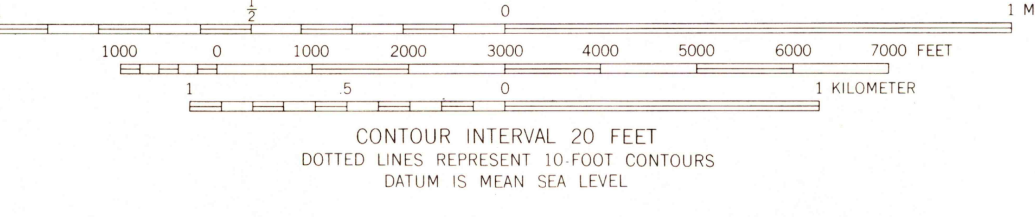
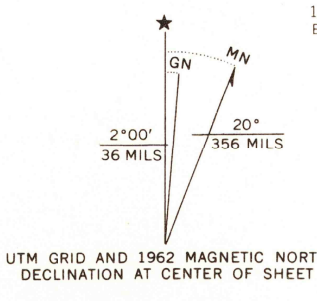
Mapped, edited, and published by the Geological Survey

Control by USGS and USC&GS

Topography by photogrammetric methods from aerial photographs taken 1956. Field checked 1962

Polycyclic projection. 1927 North American datum
10,000-foot grid based on Montana coordinate system, north zone
1000-meter Universal Transverse Mercator grid ticks,
zone 11, shown in blue

Red tint indicates areas in which only landmark buildings are shown
Fine red dashed lines indicate selected fence lines



ROAD CLASSIFICATION
Medium-duty ——— Light-duty ———
Unimproved dirt ———
U.S. Route ——— State Route ———

KALISPELL, MONT.
N4807.5-W11415/7.5
1962

AMS 3180 III NE-SERIES V894

U.S.G.S.
FILE COPY
TOPOGRAPHIC DIVISION

JUL 17 1964

3190