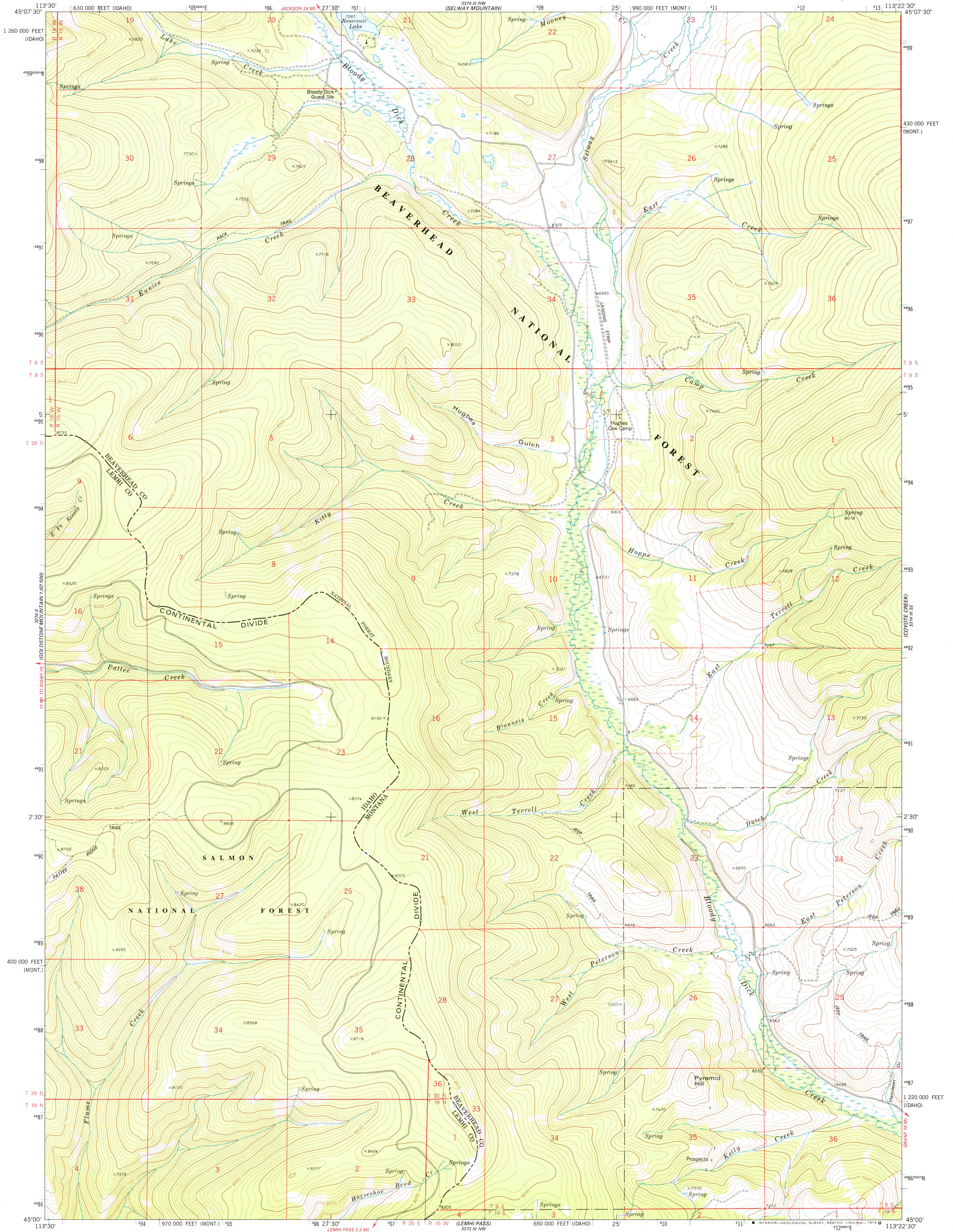


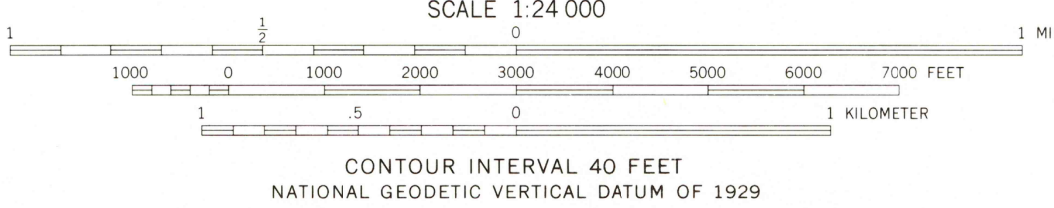
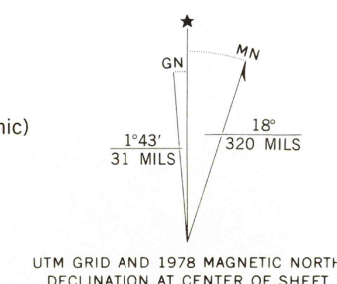
UNITED STATES
DEPARTMENT OF THE INTERIOR
GEOLOGICAL SURVEY



KITTY CREEK QUADRANGLE
MONTANA—IDAHO
7.5 MINUTE SERIES (TOPOGRAPHIC)



Mapped, edited, and published by the Geological Survey
Control by USGS, NOS/NOAA, and U. S. Forest Service
Topography by photogrammetric methods from aerial photographs
taken 1967. Field checked 1974. Map edited 1978
Projection: Montana coordinate system, south zone (Lambert conformal conic)
10,000-foot grid ticks based on Montana coordinate system, south
zone and Idaho coordinate system, central zone
1000-meter Universal Transverse Mercator grid ticks,
zone 12, shown in blue. 1927 North American datum
Fine red dashed lines indicate selected fence lines
Where omitted, land lines have not been established
There may be private inholdings within the boundaries of the
National or State reservations shown on this map



ROAD CLASSIFICATION
Primary highway, hard surface ———— improved surface ————
Secondary highway, hard surface ———— Unimproved road ————
Interstate Route U. S. Route State Route

KITTY CREEK, MONT.—IDAHO
N4500—W11322.5/7.5

USGS
Historical File
Topographic Division
AMS 3374 III SW—SERIES V894

JUN 18 1979

2865