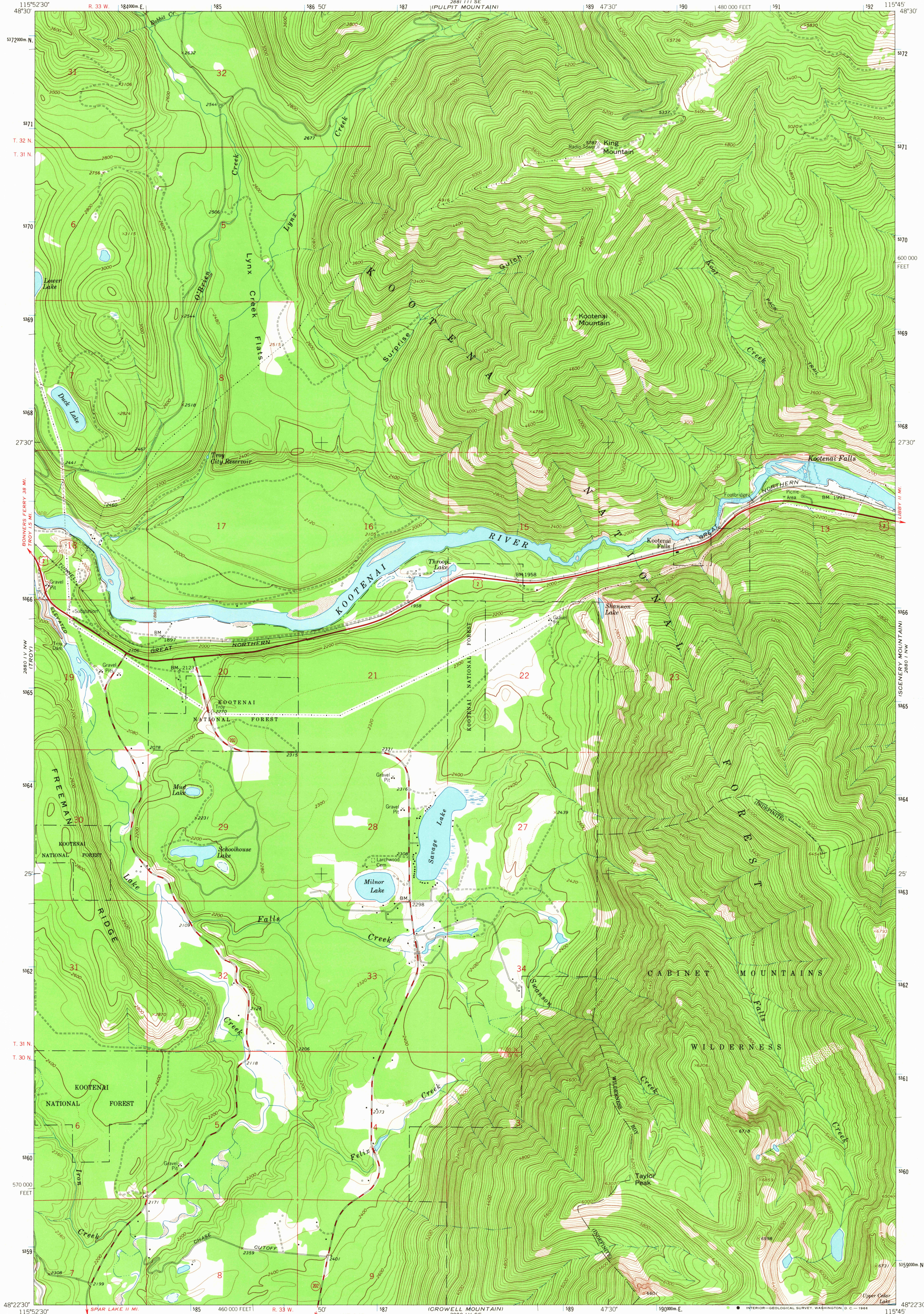


UNITED STATES  
DEPARTMENT OF THE INTERIOR  
GEOLOGICAL SURVEY

KOOTENAI FALLS QUADRANGLE  
MONTANA-LINCOLN CO.  
7.5 MINUTE SERIES (TOPOGRAPHIC)



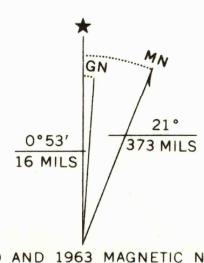
Mapped, edited, and published by the Geological Survey

Control by USGS and USC&GS

Topography by photogrammetric methods from aerial photographs taken 1962. Field checked 1963

Polyconic projection. 1927 North American datum. 10,000-foot grid based on Montana coordinate system, north zone 1000-meter Universal Transverse Mercator grid ticks, zone 11, shown in blue

Where omitted, land lines have not been established



SCALE 1:24,000

CONTOUR INTERVAL 40 FEET

DOTTED LINES REPRESENT 20 FOOT CONTOURS

DATUM IS MEAN SEA LEVEL

THIS MAP COMPLIES WITH NATIONAL MAP ACCURACY STANDARDS  
FOR SALE BY U.S. GEOLOGICAL SURVEY, DENVER, COLORADO 80225, OR WASHINGTON, D. C. 20242  
A FOLDER DESCRIBING TOPOGRAPHIC MAPS AND SYMBOLS IS AVAILABLE ON REQUEST



ROAD CLASSIFICATION

Heavy-duty ——— Light-duty ———  
Medium-duty ——— Unimproved dirt ———  
U.S. Route ——— State Route ———

KOOTENAI FALLS, MONT.  
N4822.5-W11545.7/5

1963

AMS 2880 IV NE-SERIES V894

USGS  
Historical File  
Topographic Division

U.S.G.S.  
FILE COPY  
TOPOGRAPHIC DIVISION

2715  
NOV 25 1963