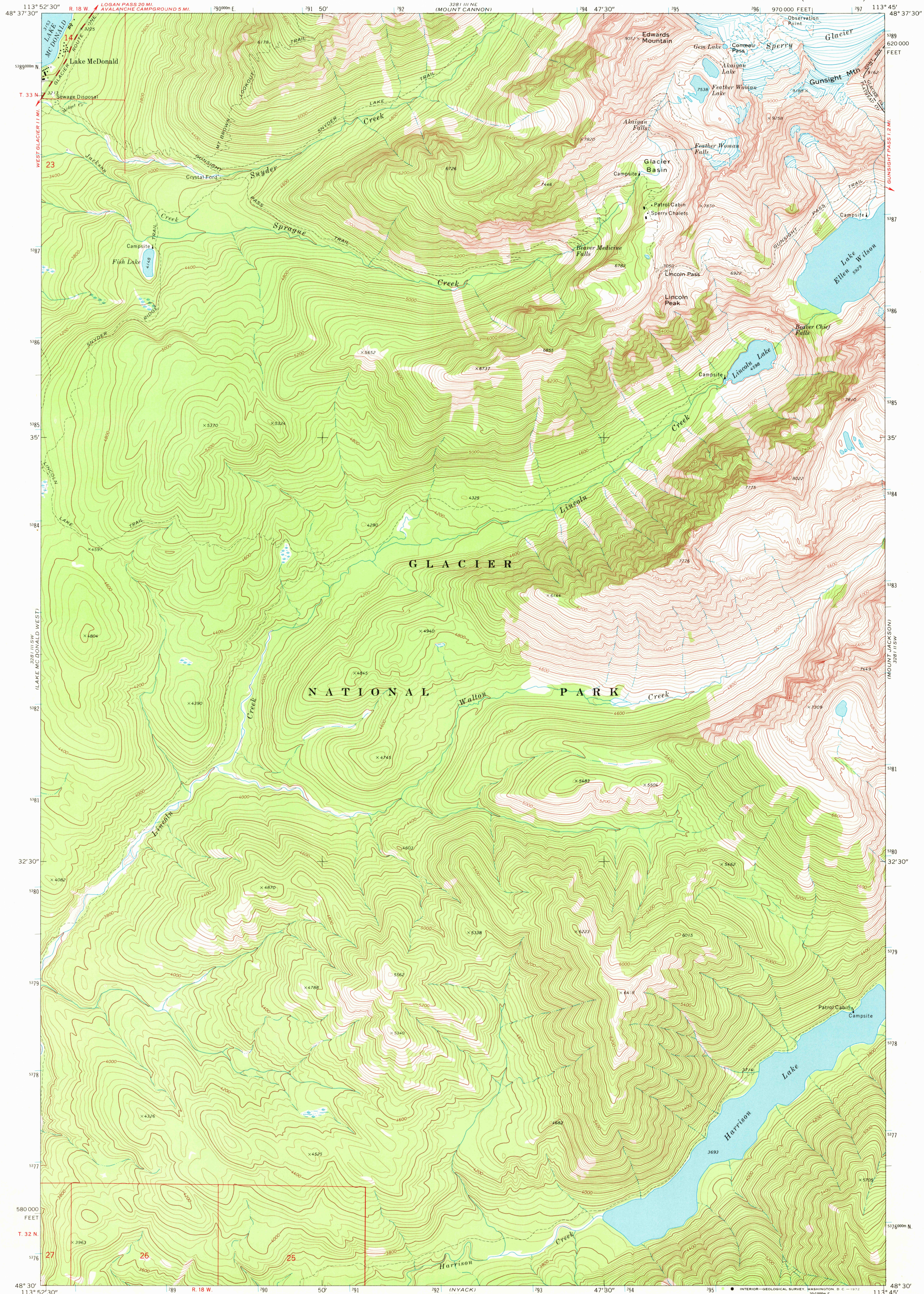
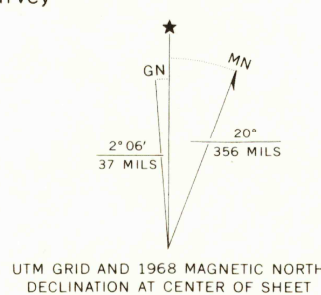


UNITED STATES
DEPARTMENT OF THE INTERIOR
GEOLOGICAL SURVEY

LAKE MC DONALD EAST QUADRANGLE
MONTANA
7.5 MINUTE SERIES (TOPOGRAPHIC)



540 000 FEET
Mapped, edited, and published by the Geological Survey
Control by USGS and USC&GS
Topography by photogrammetric methods from aerial
photographs taken 1966. Field checked 1968
Polyconic projection. 1927 North American datum
10,000-foot grid based on Montana coordinate system,
north zone
1000-meter Universal Transverse Mercator grid ticks,
zone 12, shown in blue
Where omitted, land lines have not been established



SCALE 1:24 000
CONTOUR INTERVAL 40 FEET
DATUM IS MEAN SEA LEVEL
THIS MAP COMPLIES WITH NATIONAL MAP ACCURACY STANDARDS
FOR SALE BY U.S. GEOLOGICAL SURVEY, DENVER, COLORADO 80225, OR WASHINGTON, D.C. 20242
A FOLDER DESCRIBING TOPOGRAPHIC MAPS AND SYMBOLS IS AVAILABLE ON REQUEST

ROAD CLASSIFICATION
Secondary highway, all weather, Light-duty road, all weather,
hard surface improved surface



LAKE MC DONALD EAST, MONT.
N4830-W11345/7.5

1968

AMS 3281 III SE-SERIES V894

USGS
HISTORICAL FILE
TOPOGRAPHIC DIVISION

JAN 25 1972