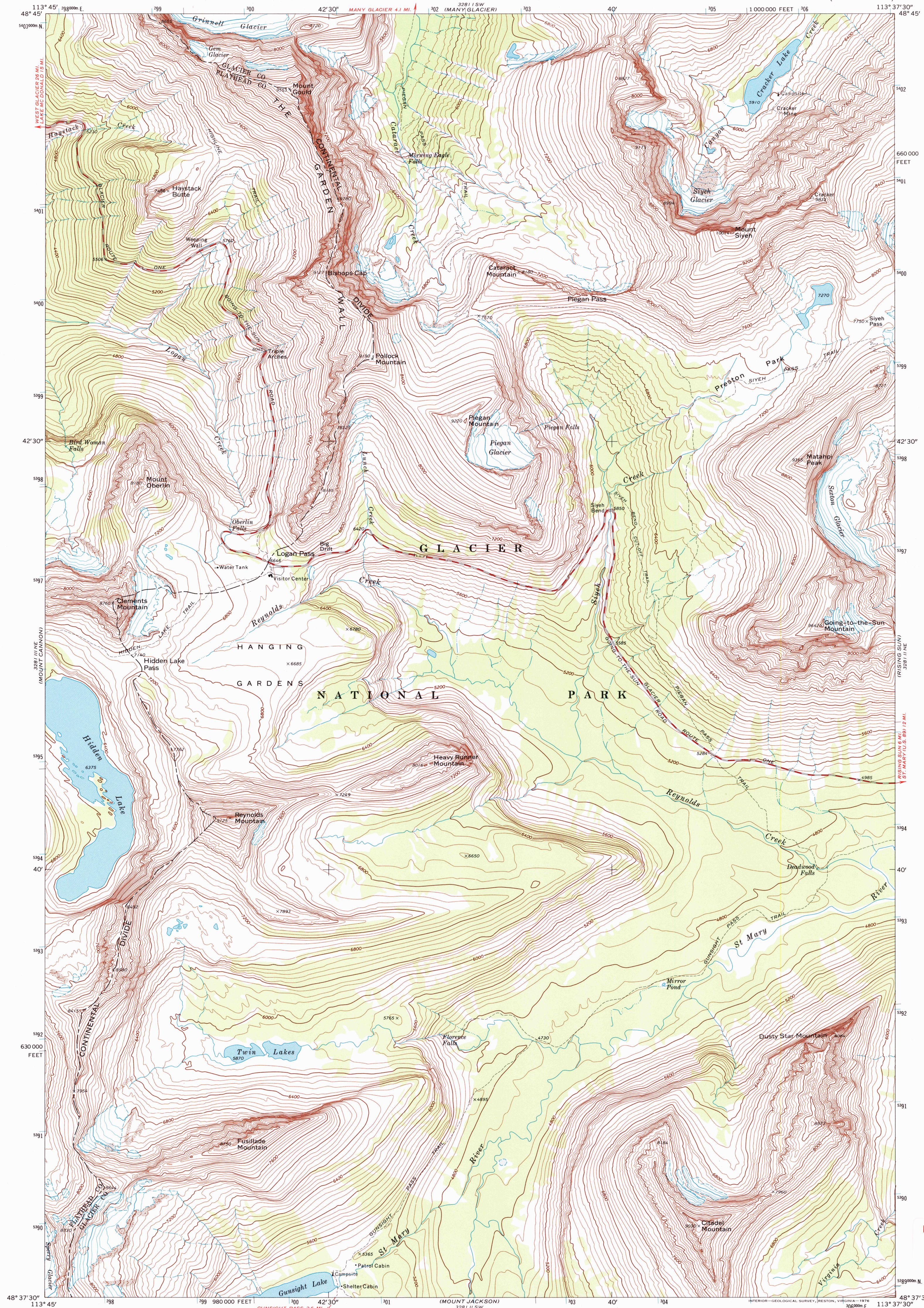


UNITED STATES
DEPARTMENT OF THE INTERIOR
GEOLOGICAL SURVEY

LOGAN PASS QUADRANGLE
MONTANA
7.5 MINUTE SERIES (TOPOGRAPHIC)



Mapped, edited, and published by the Geological Survey

Control by USGS and USC&GS

Topography by photogrammetric methods from aerial

photographs taken 1966. Field checked 1968

Polyconic projection. 1927 North American datum

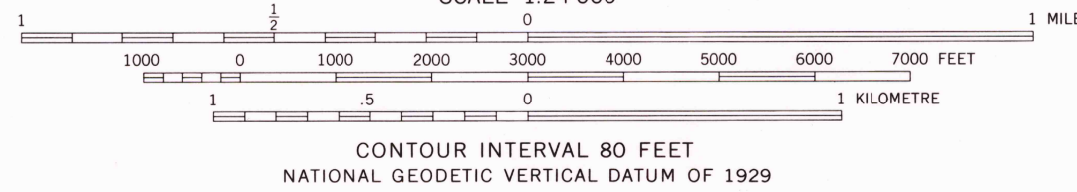
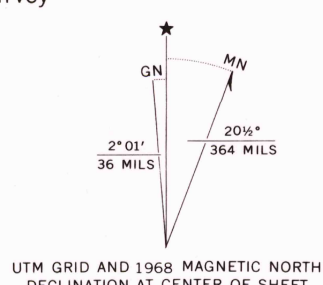
10,000-foot grid based on Montana coordinate system,

north zone

1000-metre Universal Transverse Mercator grid ticks,

zone 12, shown in blue

Land lines have not been established in this area



ROAD CLASSIFICATION
Secondary highway, all weather, Unimproved road, fair or dry
hard surface weather



LOGAN PASS, MONT.
N4837.5-W11337.5/7.5

1968

AMS 3281 II NW—SERIES Y884

USGS Library
Reston, VA.
Topo Archive

APR 25 2007

