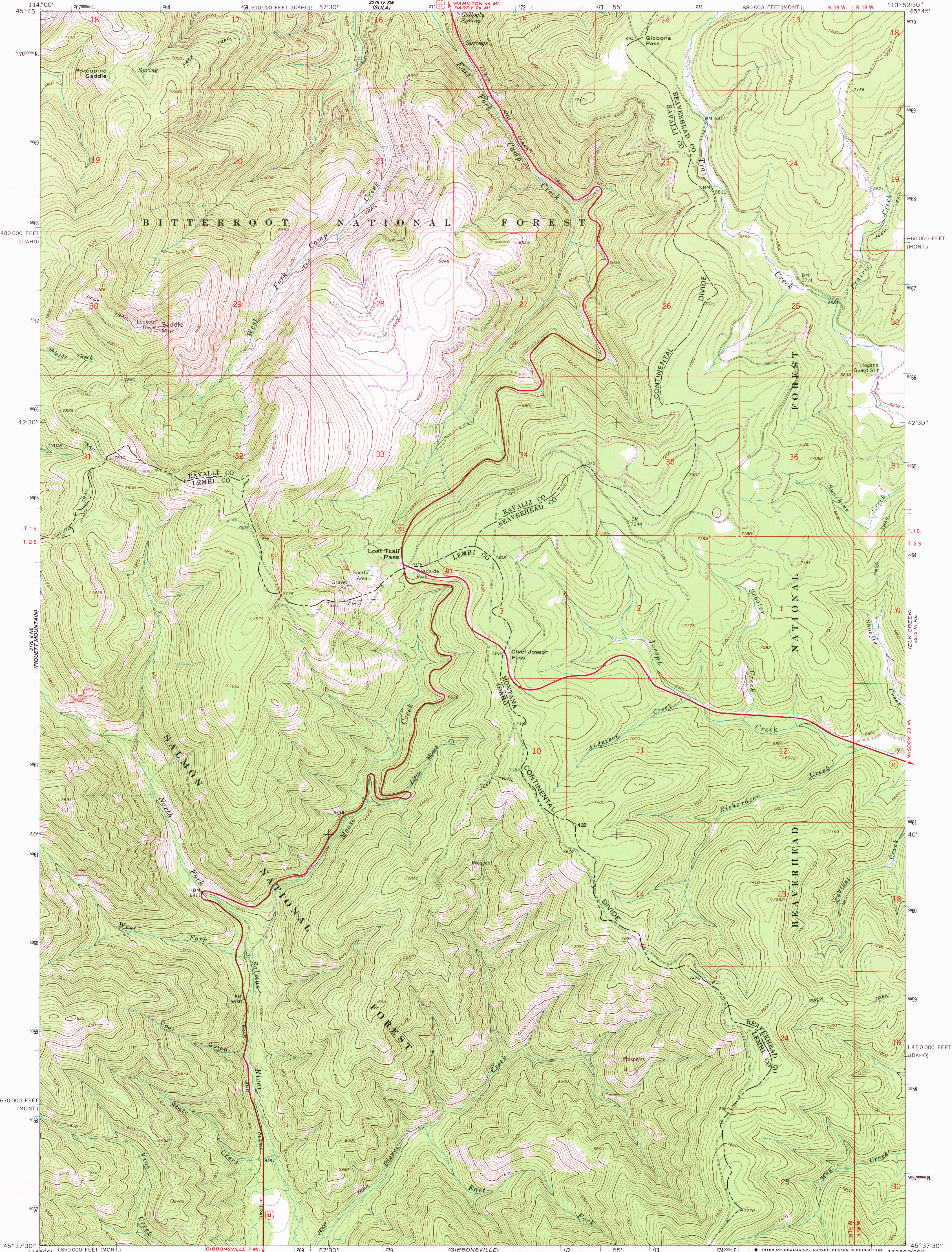
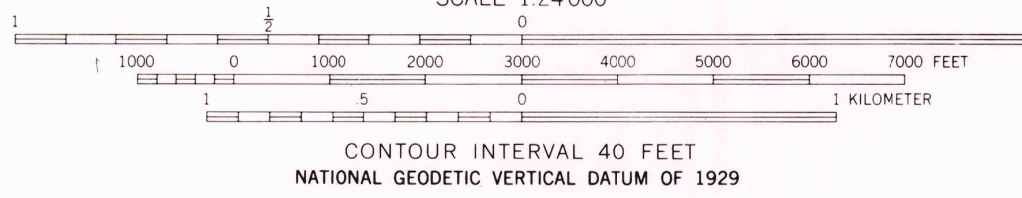
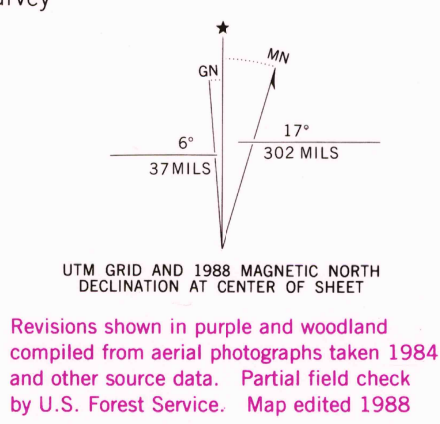


UNITED STATES
DEPARTMENT OF THE INTERIOR
GEOLOGICAL SURVEY

LOST TRAIL PASS QUADRANGLE
MONTANA-IDAHO
7.5 MINUTE SERIES (TOPOGRAPHIC)



Mapped, edited, and published by the Geological Survey
Control by USGS and NOS/NOAA
Topography by photogrammetric methods from aerial photographs taken 1965. Field checked 1966
Polyconic projection. 1927 North American Datum 10,000-foot grids based on Montana coordinate system, south zone and Idaho coordinate system, central zone 1000-meter Universal Transverse Mercator grid ticks, zone 12, shown in blue
Where omitted, land lines have not been established
To place on the predicted North American Datum 1983 move the projection lines 12 meters north and 71 meters east as shown by dashed corner ticks
There may be private inholdings within the boundaries of the National or State reservations shown on this map



THIS MAP COMPLIES WITH NATIONAL MAP ACCURACY STANDARDS
FOR SALE BY U.S. GEOLOGICAL SURVEY
DENVER, COLORADO 80225, OR RESTON, VIRGINIA 22092
A FOLDER DESCRIBING TOPOGRAPHIC MAPS AND SYMBOLS IS AVAILABLE ON REQUEST



ROAD CLASSIFICATION
Heavy-duty ——— Light-duty ———
Medium-duty ——— Unimproved dirt ———
U.S. Route ——— State Route ———

LOST TRAIL PASS, MONT.-IDAHO
45113-F8-TF-024

1966
PHOTOREVISED 1988
DMA 3275 III NW-SERIES V894

