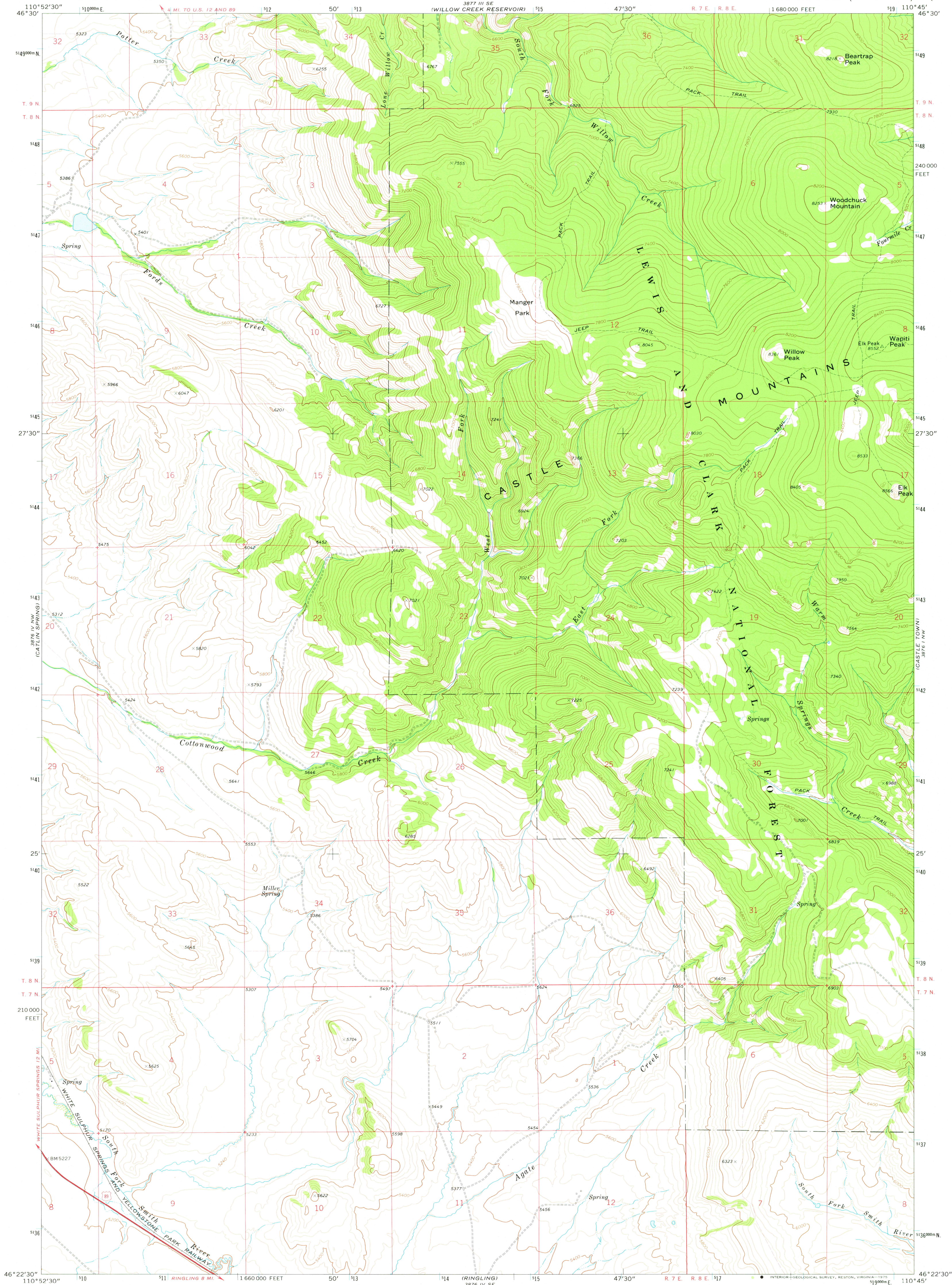
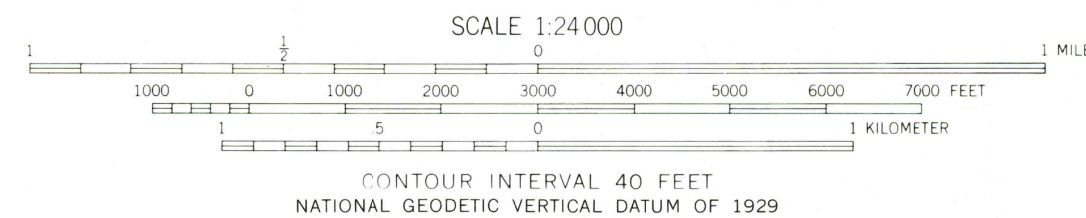
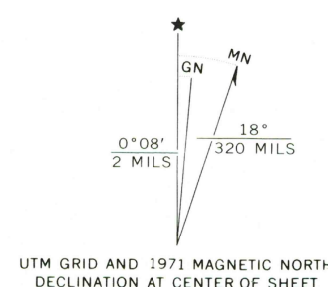


UNITED STATES  
DEPARTMENT OF THE INTERIOR  
GEOLOGICAL SURVEY

MANGER PARK QUADRANGLE  
MONTANA—MEAGHER CO.  
7.5 MINUTE SERIES (TOPOGRAPHIC)



Mapped, edited, and published by the Geological Survey  
Control by USGS and USC&GS  
Topography by photogrammetric methods from aerial  
photographs taken 1970. Field checked 1971  
Projection and 10,000-foot grid ticks: Montana  
coordinate system, central zone (Lambert conformal conic)  
1000-meter Universal Transverse Mercator grid ticks,  
zone 12, shown in blue. 1927 North American datum  
Fine red dashed lines indicate selected fence lines



USGS  
Historical File  
Topographic Division

MANGER PARK, MONT.  
N4622.5-W11045/7.5

1971

AMS 3876 IV NE—SERIES V994

MAR 12 1975

2665