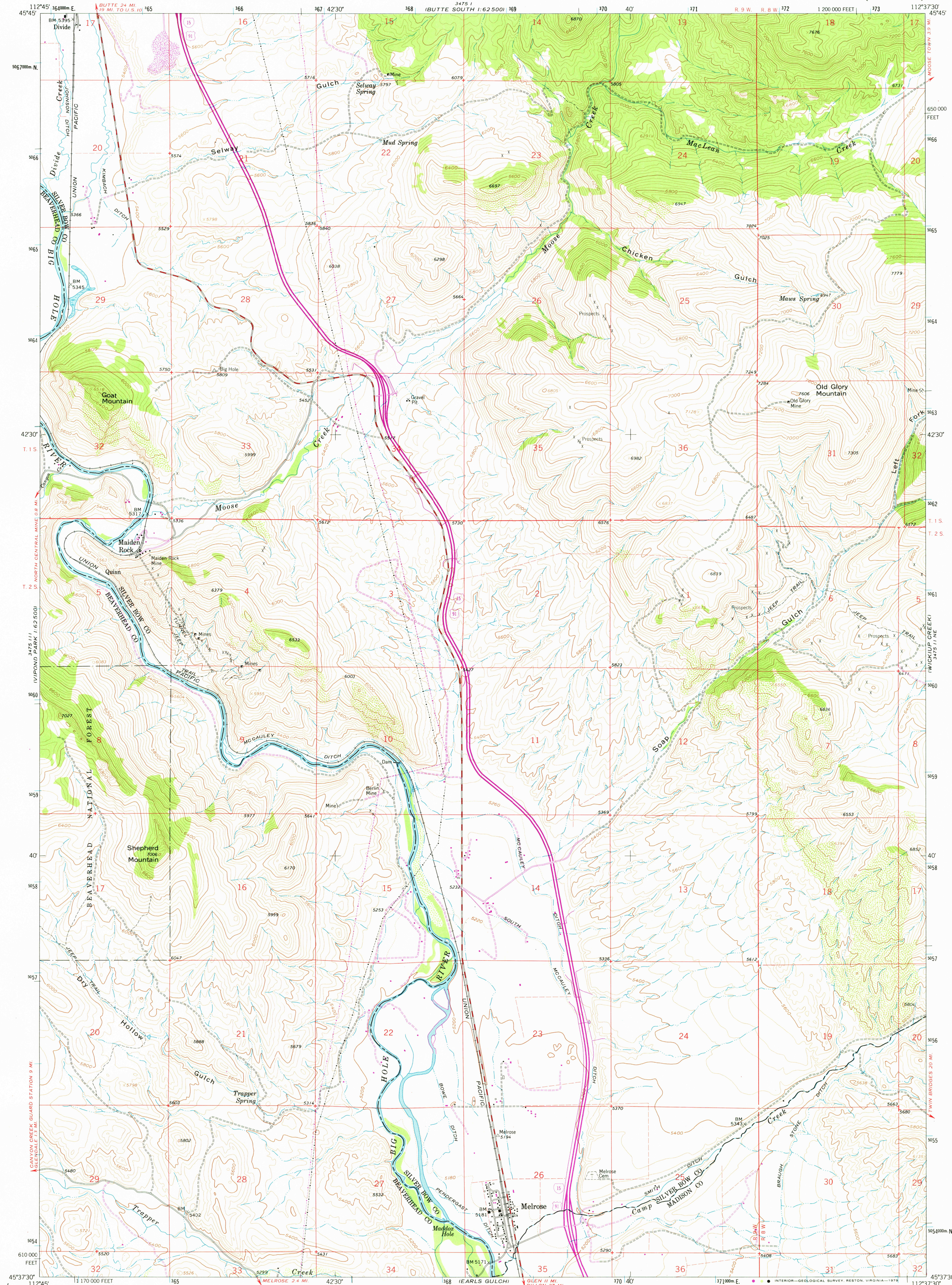


3475 I  
162 500  
BUTTE SOUTH



Mapped, edited, and published by the Geological Survey

Control by USGS and USC&GS

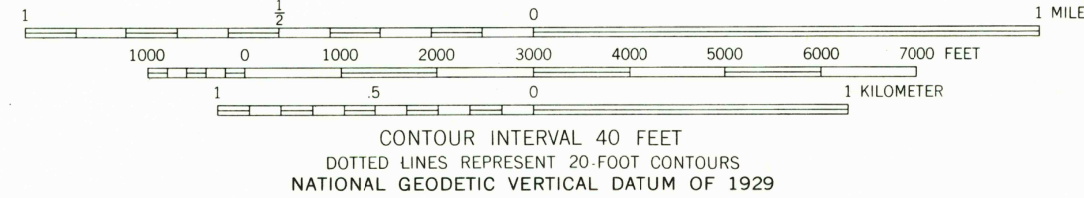
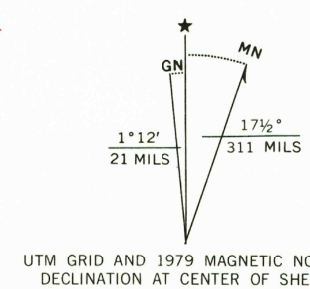
Topography by photogrammetric methods from aerial photographs taken 1956. Field checked 1961

Polyconic projection. 1927 North American datum 10,000-foot grid based on Montana coordinate system, south zone 1000 meter Universal Transverse Mercator grid ticks, zone 12, shown in blue

Fine red dashed lines indicate selected fence lines

There may be private inholdings within the boundaries of the National or State reservations shown on this map

Revisions shown in purple and woodland compiled from aerial photographs taken 1976 and other source data This information not field checked. Map edited 1979



THIS MAP COMPLIES WITH NATIONAL MAP ACCURACY STANDARDS  
FOR SALE BY U.S. GEOLOGICAL SURVEY, DENVER, COLORADO 80225, OR RESTON, VIRGINIA 22092  
A FOLDER DESCRIBING TOPOGRAPHIC MAPS AND SYMBOLS IS AVAILABLE ON REQUEST



QUADRANGLE LOCATION

ROAD CLASSIFICATION  
Primary highway, all weather, Light duty road, all weather, improved surface  
Secondary highway, all weather, Unimproved road, fair or dry weather  
Interstate Route U. S. Route State Route

MELROSE, MONT.  
N4537.5-W11237.5/7.5

1961  
PHOTOREVISED 1979  
AMS 3475 I NW-SERIES V894

3475 I  
162 500  
BUTTE SOUTH

NEZ PERCE HOLLOW

USGS  
Historical File  
Topographic Division  
DEC 11 1979