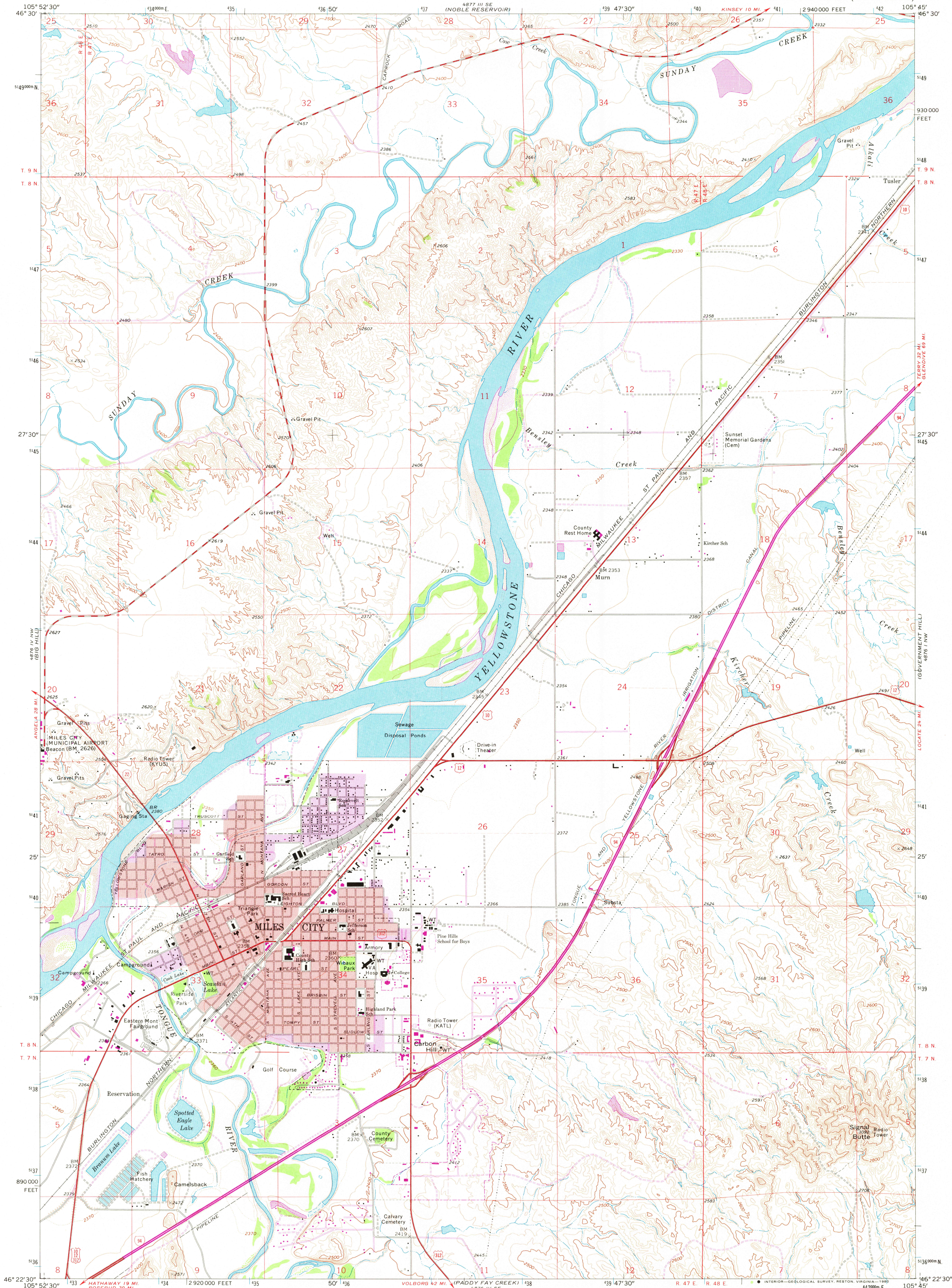


UNITED STATES  
DEPARTMENT OF THE INTERIOR  
GEOLOGICAL SURVEY

MILES CITY QUADRANGLE  
MONTANA—CUSTER CO.  
7.5 MINUTE SERIES (TOPOGRAPHIC)



Mapped, edited, and published by the Geological Survey

Control by USGS and NOS/NOAA

Topography by photogrammetric methods from aerial

photographs taken 1966. Field checked 1968

Polyconic projection. 1927 North American datum

10,000-foot grid based on Montana coordinate system,

south zone

1000-meter Universal Transverse Mercator grid ticks,

zone 13, shown in blue

Red tint indicates areas in which only landmark buildings

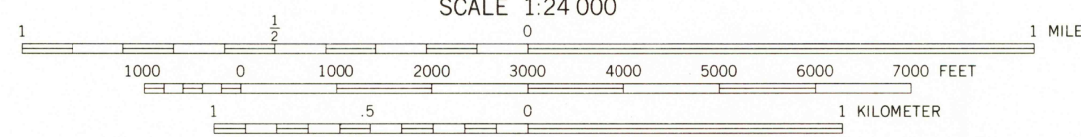
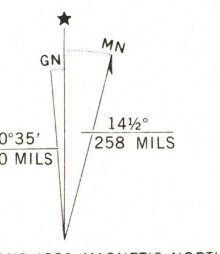
are shown

Fine red dashed lines indicate selected fence lines

To place on the predicted North American Datum 1983

move the projection lines 5 meters north and

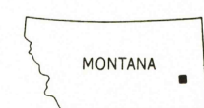
45 meters east as shown by dashed corner ticks



CONTOUR INTERVAL 20 FEET

DOTTED LINES REPRESENT 10-FOOT CONTOURS

NATIONAL GEODETIC VERTICAL DATUM OF 1929



QUADRANGLE LOCATION

ROAD CLASSIFICATION	
Primary highway, hard surface	Light-duty road, hard or improved surface
Secondary highway, hard surface	Unimproved road
Interstate Route	U.S. Route
Historical Route	State Route

Topographic Division

MILES CITY, MONT.

N4622.5—W10545.7.5

1968

PHOTOREVISED 1980

DMA 4876 IV NE—SERIES V894

Revisions shown in purple compiled from aerial photographs taken 1978 and other source data. This information not field checked. Map edited 1980

THIS MAP COMPLIES WITH NATIONAL MAP ACCURACY STANDARDS FOR SALE BY U.S. GEOLOGICAL SURVEY, DENVER, COLORADO 80225, OR RESTON, VIRGINIA 22092 A FOLDER DESCRIBING TOPOGRAPHIC MAPS AND SYMBOLS IS AVAILABLE ON REQUEST

USGS  
Historical File  
Topographic Division

1970

JAN 29 1981