

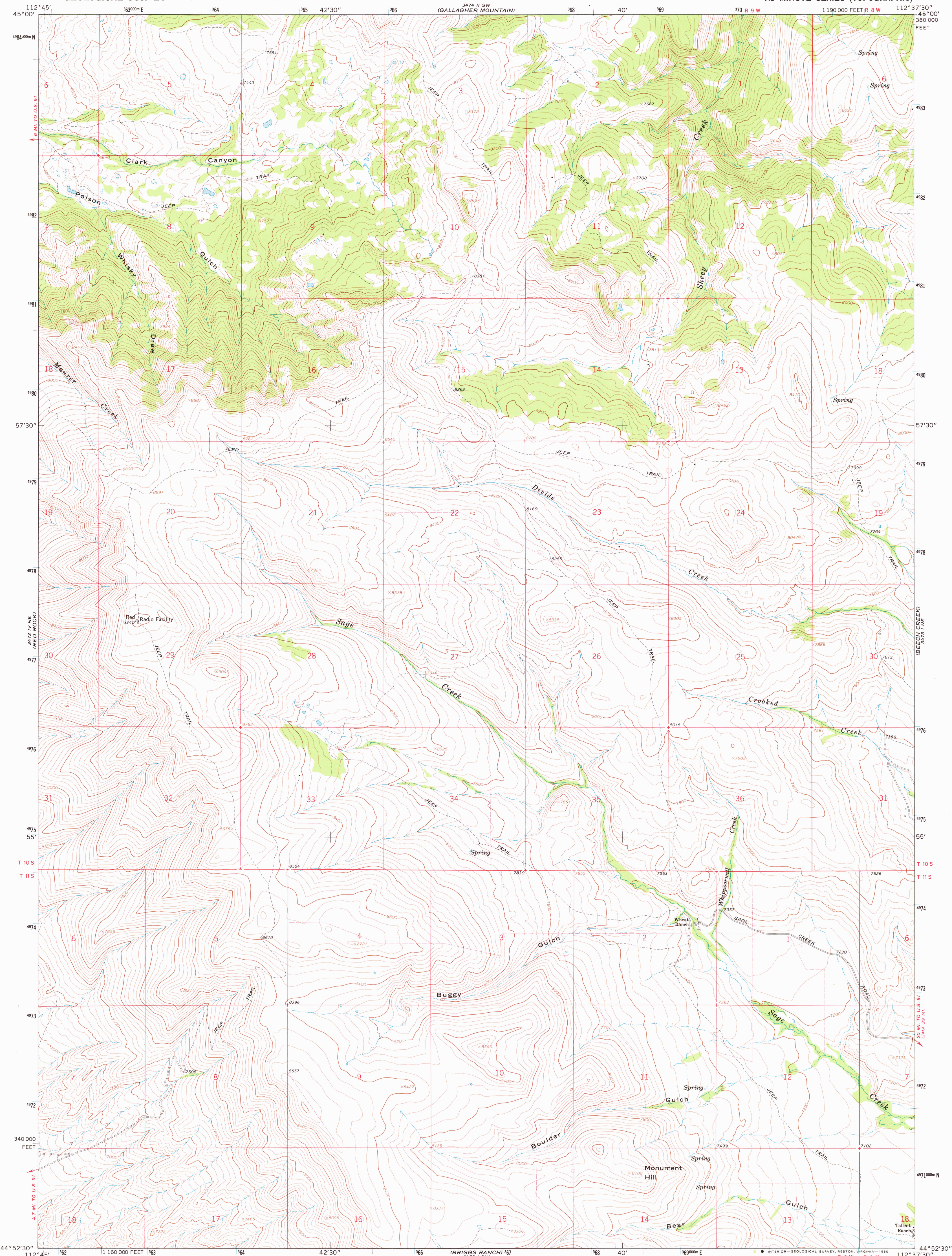
34° 11' SE
04° 15'

UNITED STATES
DEPARTMENT OF THE INTERIOR
GEOLOGICAL SURVEY

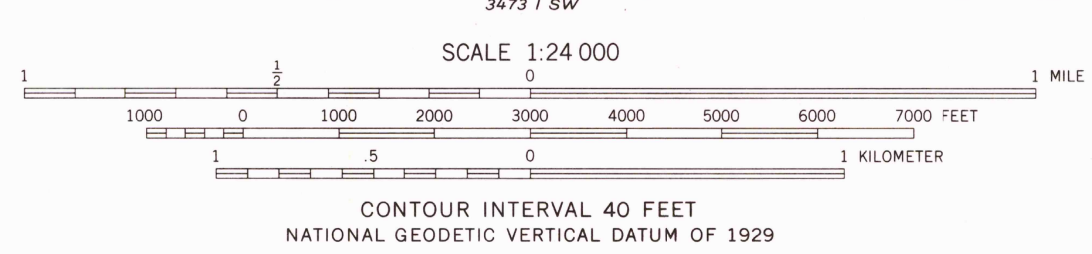
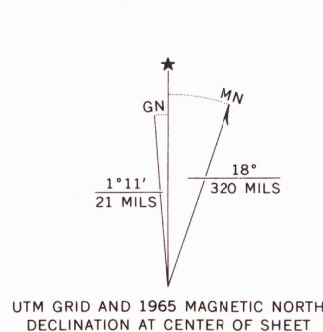


MONUMENT HILL QUADRANGLE
MONTANA—BEAVERHEAD CO.
7.5 MINUTE SERIES (TOPOGRAPHIC)

34° 11' SE
04° 15' NE
ASHBOUGH CANYON



Mapped, edited, and published by the Geological Survey
Control by USGS and USC&GS
Topography by photogrammetric methods from aerial
photographs taken 1964. Field checked 1965
Polyconic projection. 1927 North American datum
10,000-foot grid based on Montana coordinate system,
south zone.
1000-meter Universal Transverse Mercator grid ticks,
zone 12, shown in blue
Fine red dashed lines indicate selected fence lines
To place on the predicted North American Datum 1983
move the projection lines 12 meters north and
67 meters east as shown by dashed corner ticks
Map photorevised 1976
No major culture or drainage changes observed



ROAD CLASSIFICATION
Light-duty Unimproved dirt

MONUMENT HILL, MONT.
N4452.5—W11237.5/7.5

1965
PHOTOINSPECTED 1976
DMA 3473 1 NW—SERIES V894

RETURN TO
USGS AND HISTORICAL MAP ARCHIVES

