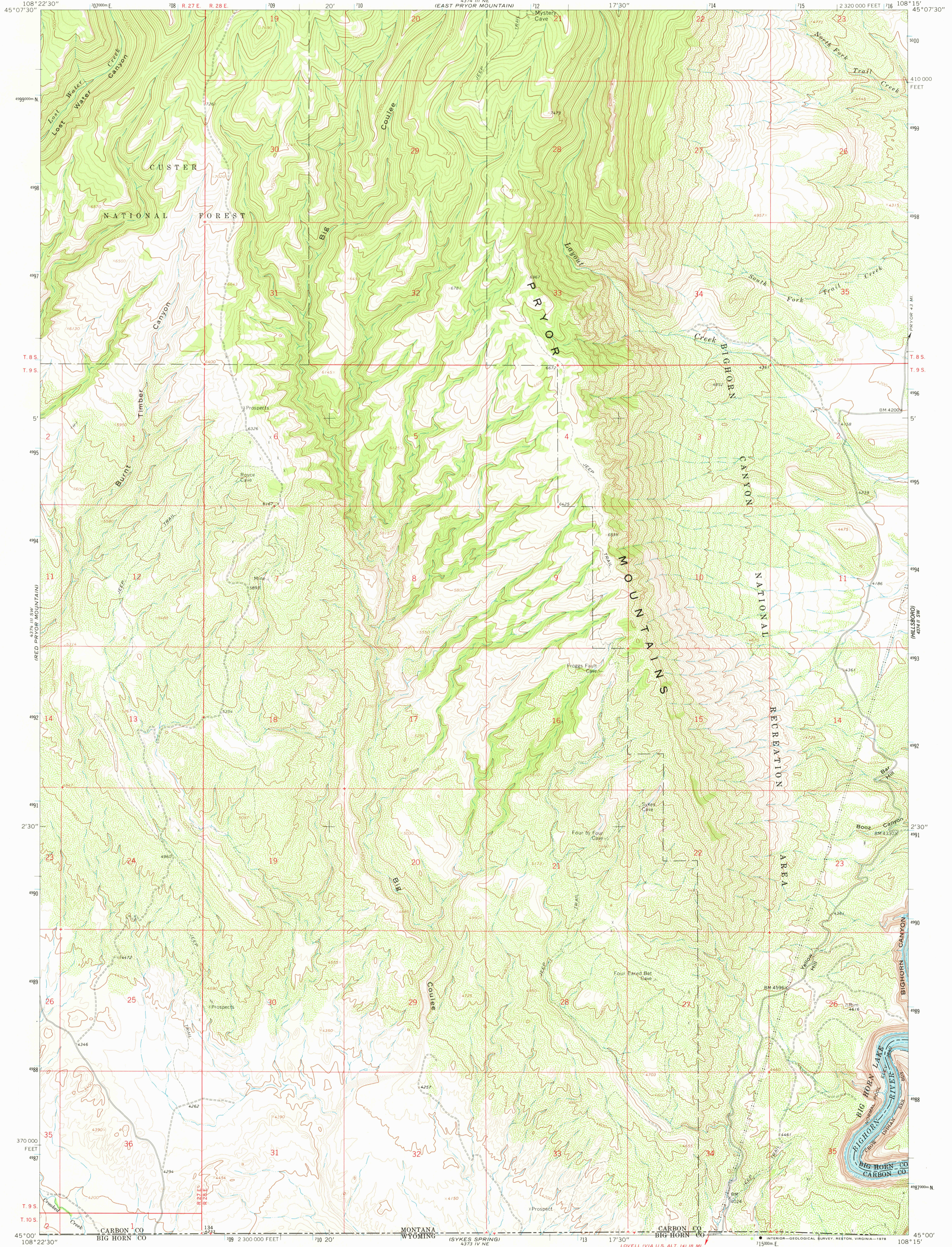


UNITED STATES
DEPARTMENT OF THE INTERIOR
GEOLOGICAL SURVEY

MYSTERY CAVE QUADRANGLE
MONTANA-WYOMING
7.5 MINUTE SERIES (TOPOGRAPHIC)

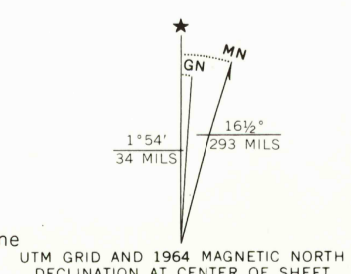


Maped, edited, and published by the Geological Survey
as part of the Department of the Interior program
for the development of the Missouri River Basin
Control by USGS, USC&GS, U.S. Forest Service, and
U.S. Bureau of Reclamation

Topography by photogrammetric methods from aerial
photographs taken 1963. Field checked 1964

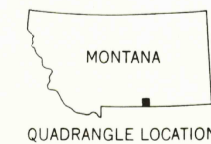
Polyconic projection. 1927 North American datum
10,000-foot grid based on Montana coordinate system, south zone
1000-meter Universal Transverse Mercator grid ticks,
zone 12, shown in blue

Fine dashed lines indicate selected fence lines
Where omitted, land lines have not been established
Areas covered by dashed light-blue pattern are
subject to controlled inundation



SCALE 1:24,000
CONTOUR INTERVAL 40 FEET
NATIONAL GEODETIC VERTICAL DATUM OF 1929

THIS MAP COMPLIES WITH NATIONAL MAP ACCURACY STANDARDS
FOR SALE BY U.S. GEOLOGICAL SURVEY, DENVER, COLORADO 80225, OR RESTON, VIRGINIA 22092
A FOLDER DESCRIBING TOPOGRAPHIC MAPS AND SYMBOLS IS AVAILABLE ON REQUEST



USGS
Historical File
Topographic Division

ROAD CLASSIFICATION
Light-duty ————— Unimproved dirt —————

MYSTERY CAVE, MONT. - WYO.
N4500-W10815/7.5

1964

AMS 4374 III SE-SERIES V894

JUN 2 1 1978
3300