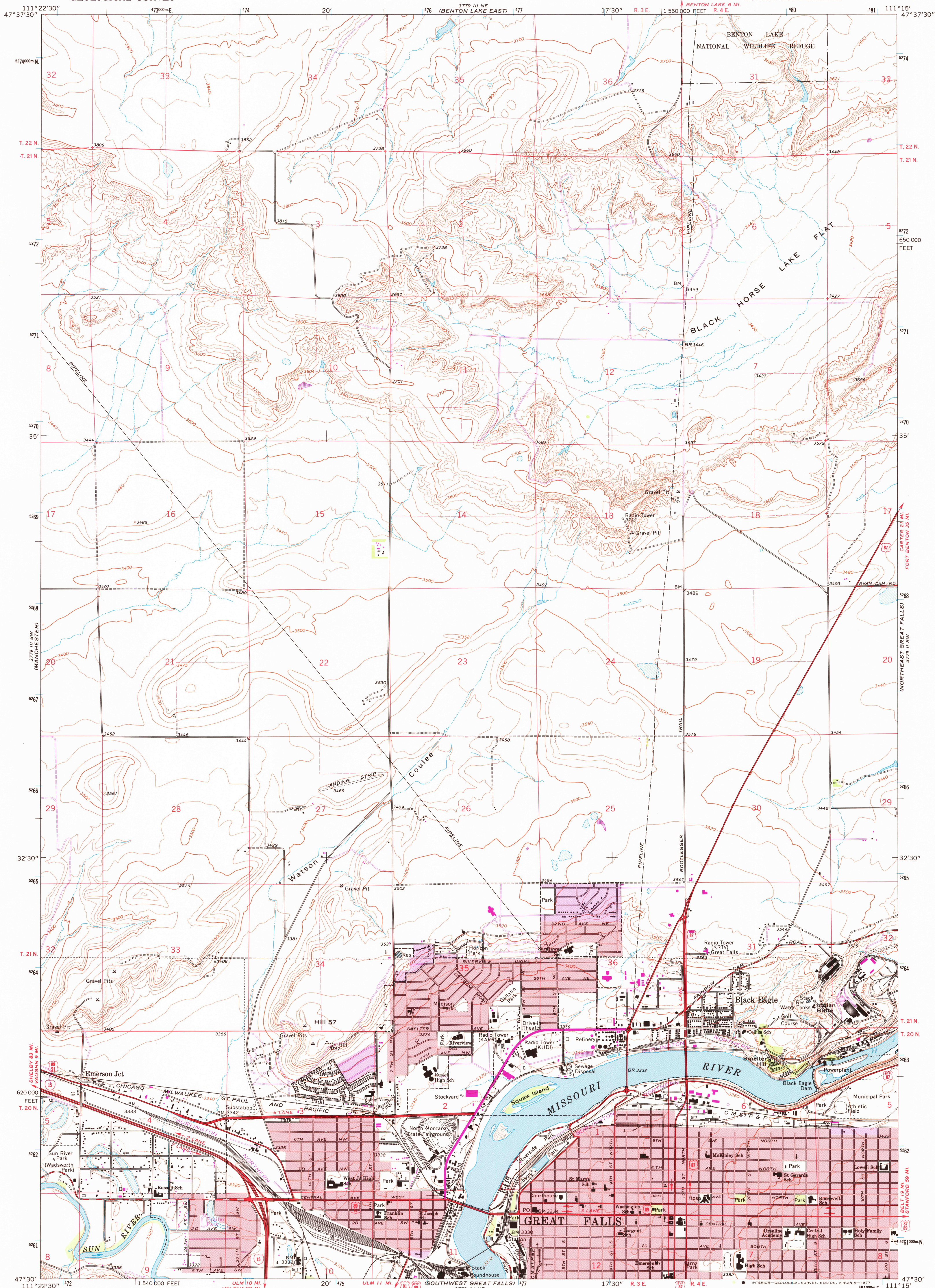


UNITED STATES
DEPARTMENT OF THE INTERIOR
GEOLOGICAL SURVEY

NORTHWEST GREAT FALLS QUADRANGLE
MONTANA—CASCADE CO.
7.5 MINUTE SERIES (TOPOGRAPHIC)
SE/4 GREAT FALLS 15' QUADRANGLE



Maped, edited, and published by the Geological Survey
Control by USGS and NOS/NOAA

Topography by photogrammetric methods from aerial
photographs taken 1964. Field checked 1965

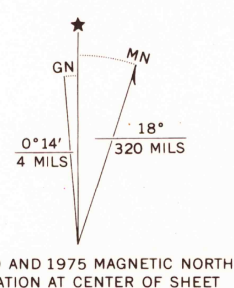
Polyconic projection. 1927 North American datum
10,000-foot grid based on Montana coordinate system,
central zone
1000-meter Universal Transverse Mercator grid ticks,
zone 12, shown in blue

Red tint indicates areas in which only
landmark buildings are shown

Fine red dashed lines indicate selected fence lines

Revisions shown in purple compiled from aerial photographs
taken 1975. This information not field checked

Purple tint indicates extension of urban areas



CONTOUR INTERVAL 20 FEET
DOTTED LINES REPRESENT 10-FOOT CONTOURS
NATIONAL GEODETIC VERTICAL DATUM OF 1929

THIS MAP COMPLIES WITH NATIONAL MAP ACCURACY STANDARDS
FOR SALE BY U. S. GEOLOGICAL SURVEY, DENVER, COLORADO 80225, OR RESTON, VIRGINIA 22092
A FOLDER DESCRIBING TOPOGRAPHIC MAPS AND SYMBOLS IS AVAILABLE ON REQUEST



ROAD CLASSIFICATION
Heavy-duty ——— Light-duty ———
Medium-duty ——— Unimproved dirt ———
Interstate Route U. S. Route

NORTHWEST GREAT FALLS, MONT.
SE/4 GREAT FALLS 15' QUADRANGLE
N4730—W11115/7.5

USGS
Historical File
Topographic Division
1965
PHOTOREVISED 1975
AMS 3779 III SE—SERIES V894

JUL 0 6 1978