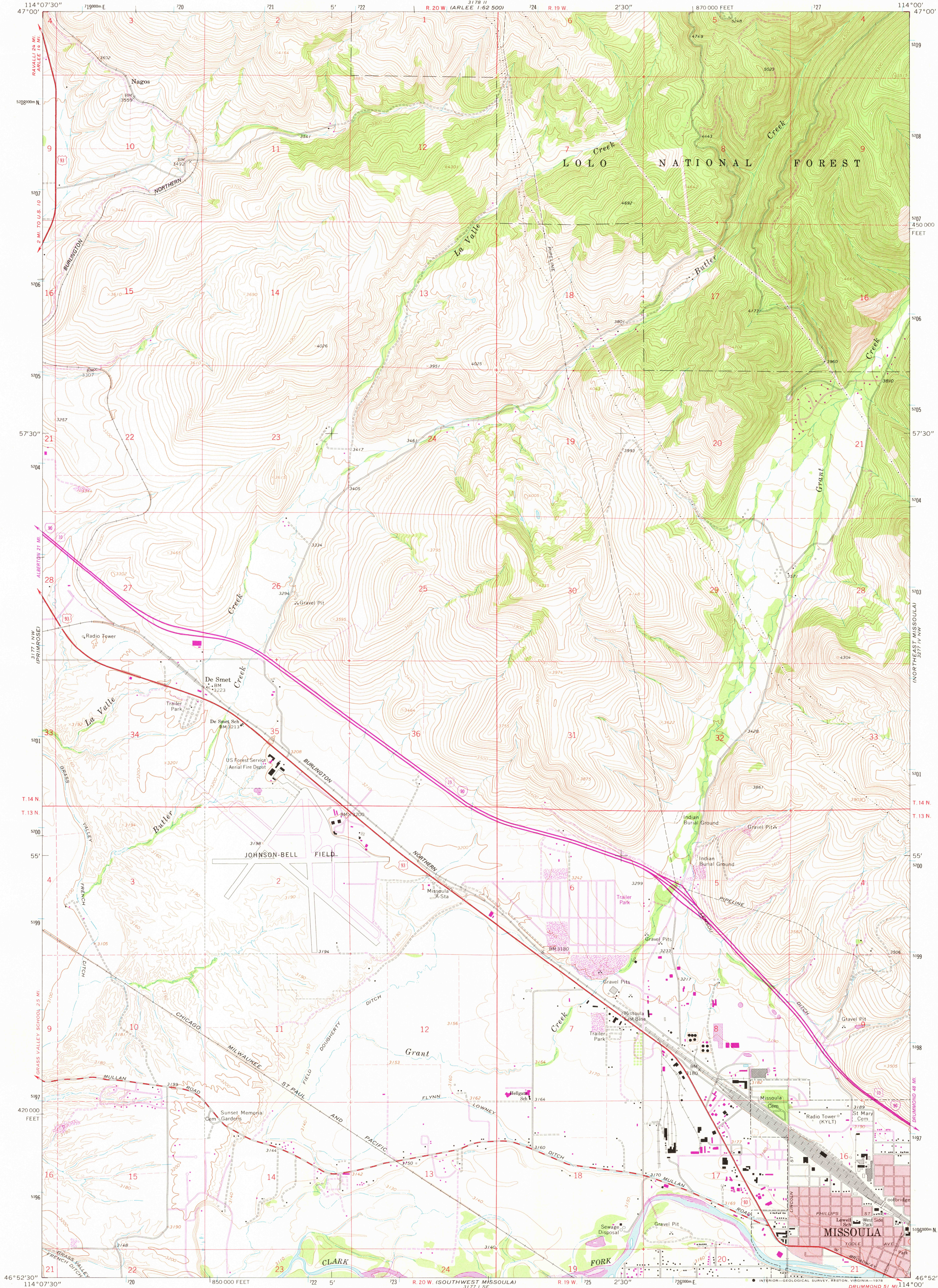


UNITED STATES  
DEPARTMENT OF THE INTERIOR  
GEOLOGICAL SURVEY

NORTHWEST MISSOULA QUADRANGLE  
MONTANA—MISSOULA CO.  
7.5 MINUTE SERIES (TOPOGRAPHIC)



Mapped, edited, and published by the Geological Survey

Control by USGS and NOS/NOAA

Topography by photogrammetric methods from aerial

photographs taken 1961. Field checked 1964

Polyconic projection. 1927 North American datum

10,000-foot grid based on Montana coordinate system, central zone

1000-meter Universal Transverse Mercator grid ticks,

zone 11, shown in blue

Red tint indicates areas in which only landmark buildings are shown

Fine red dashed lines indicate selected fence lines

Revisions shown in purple compiled from aerial photographs taken

1976. Map edited 1978. This information not field checked

SCALE 1:24 000

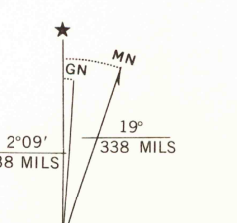
0 1000 2000 3000 4000 5000 6000 7000 FEET

0 1 2 3 4 5 6 7 8 9 10 KILOMETER

CONTOUR INTERVAL 20 FEET

DOTTED LINES REPRESENT 10-FOOT CONTOURS

NATIONAL GEODETIC VERTICAL DATUM OF 1929



ROAD CLASSIFICATION

Heavy-duty ——— Light-duty ———

Medium-duty ——— Unimproved dirt ———

U.S. Route

Interstate Route

NORTHWEST MISSOULA, MONT.

N4652.5—W11400.7.5

USGS  
Historical File  
Topographic Division

1964  
PHOTOREVISED 1978  
AMS 3177 I NE—SERIES V894

JAN 05 1979

2900