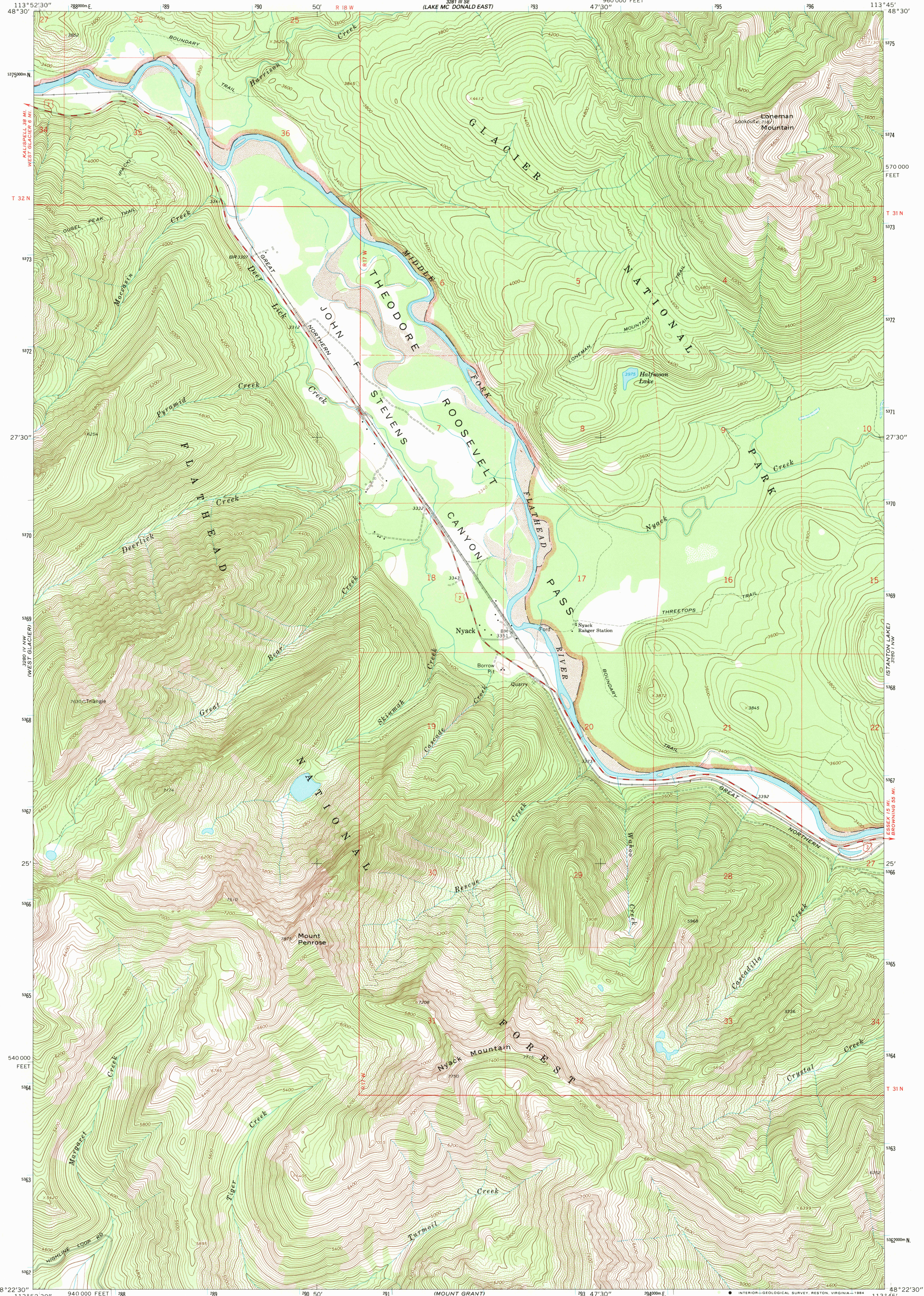


3280 IV NW
(LAKE MC DONALD)

UNITED STATES
DEPARTMENT OF THE INTERIOR
GEOLOGICAL SURVEY

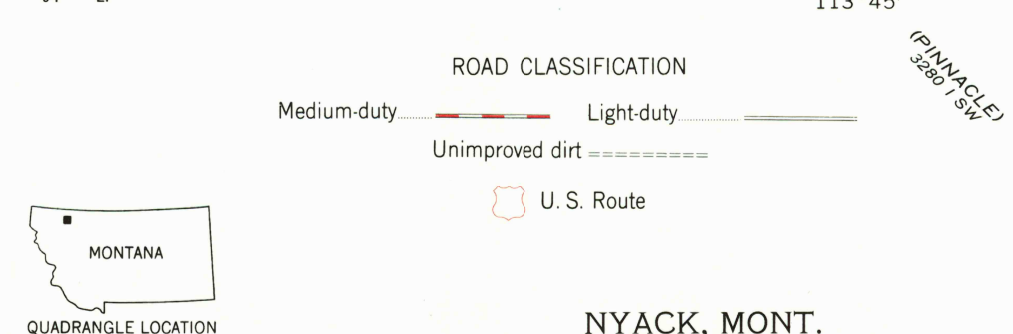
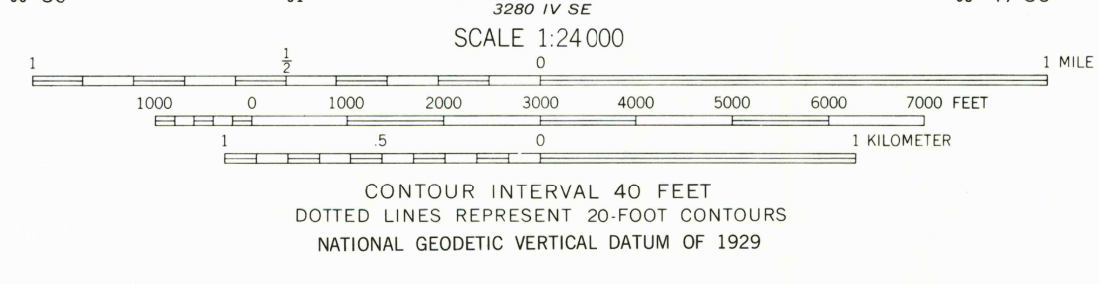
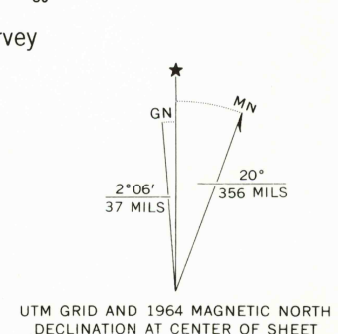
NYACK QUADRANGLE
MONTANA—FLATHEAD CO.
7.5 MINUTE SERIES (TOPOGRAPHIC)

3280 IV SW
(MOUNT JACKSON)



3280 IV SW
(LAKE MC DONALD)

Mapped, edited, and published by the Geological Survey
Control by USGS and USC&GS
Topography by photogrammetric methods from aerial
photographs taken 1963. Field checked 1964
Polyconic projection. 1927 North American Datum
10,000-foot grid based on Montana coordinate system,
north zone
1000-meter Universal Transverse Mercator grid ticks,
zone 12, shown in blue
Where omitted, land lines have not been established
To place on the predicted North American Datum 1983
move the projection lines 11 meters north and
69 meters east as shown by dashed corner ticks
There may be private inholdings within the boundaries of the
National or State reservations shown on this map



THIS MAP COMPLIES WITH NATIONAL MAP ACCURACY STANDARDS
FOR SALE BY U. S. GEOLOGICAL SURVEY, DENVER, COLORADO 80225, OR RESTON, VIRGINIA 22092
A FOLDER DESCRIBING TOPOGRAPHIC MAPS AND SYMBOLS IS AVAILABLE ON REQUEST

NYACK, MONT.
48115-D7-TF-024

1964
DMA 3280 IV NE-SERIES V894

RETURN TO:
USGS AND HISTORICAL MAP ARCHIVES