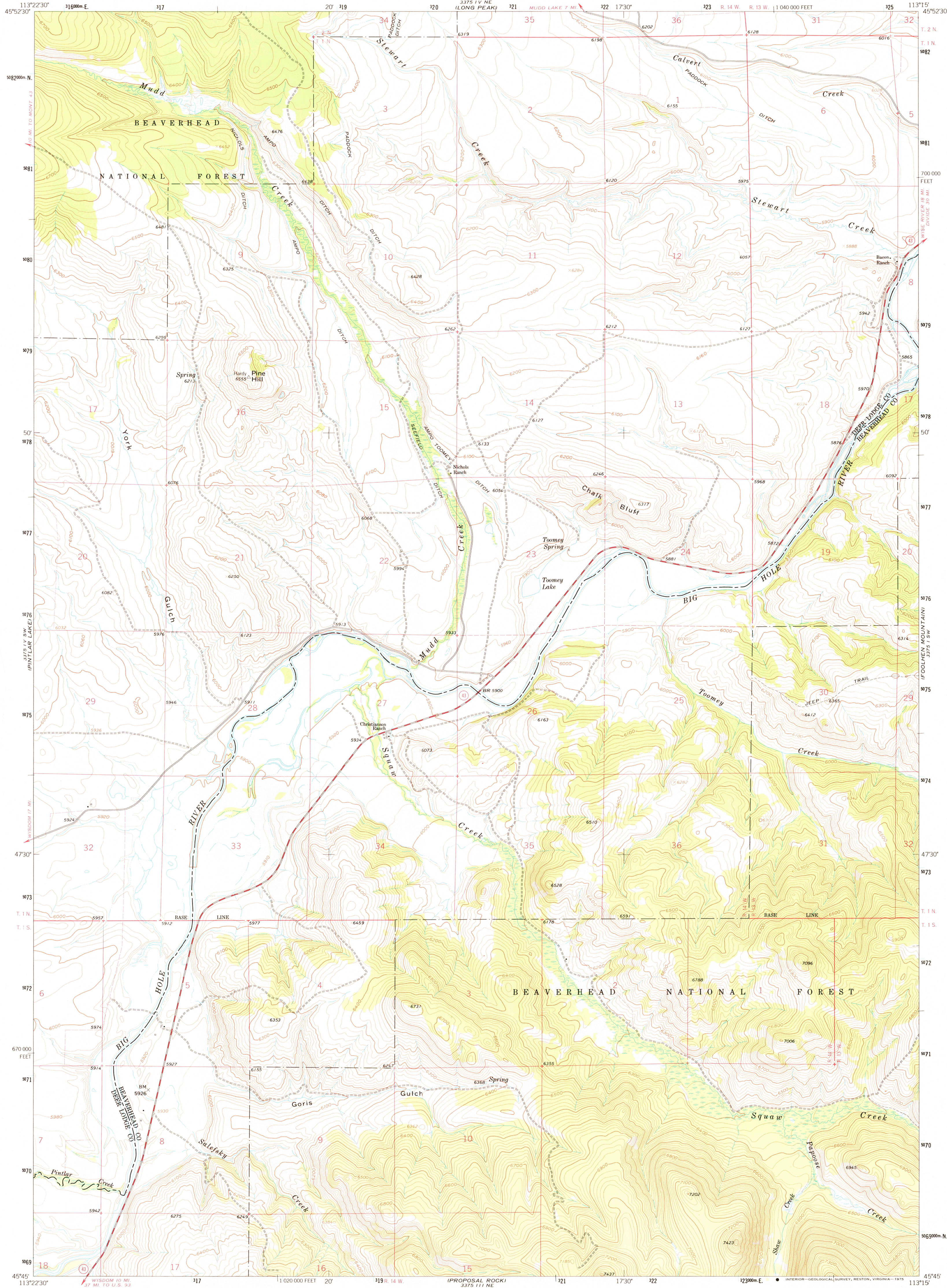


UNITED STATES  
DEPARTMENT OF THE INTERIOR  
GEOLOGICAL SURVEY

PINE HILL QUADRANGLE  
MONTANA  
7.5 MINUTE SERIES (TOPOGRAPHIC)



Mapped, edited, and published by the Geological Survey

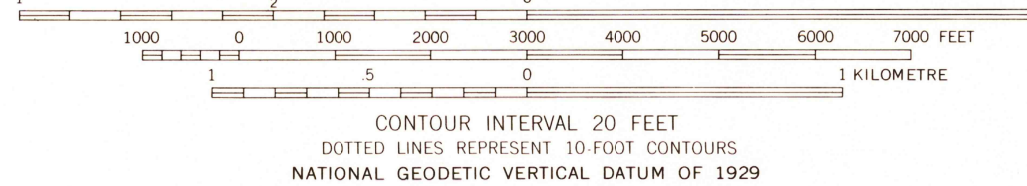
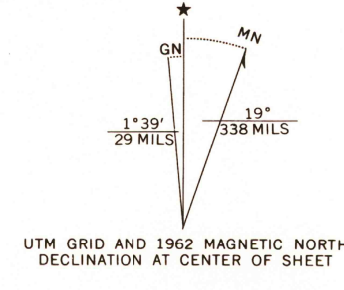
Control by USGS and USC&GS

Topography by photogrammetric methods from aerial photographs taken 1955. Field checked 1962

Polycyclic projection. 1927 North American datum  
10,000-foot grid based on Montana coordinate system, south zone  
1000-metre Universal Transverse Mercator grid ticks,  
zone 12, shown in blue

Where omitted, land lines have not been established

Fine red dashed lines indicate selected fence lines



USGS  
HISTORICAL FILE  
TOPOGRAPHIC DIVISION

PINE HILL, MONT.  
N4545-W11315/7.5  
1962

AMS 3375 IV SE-SERIES V894