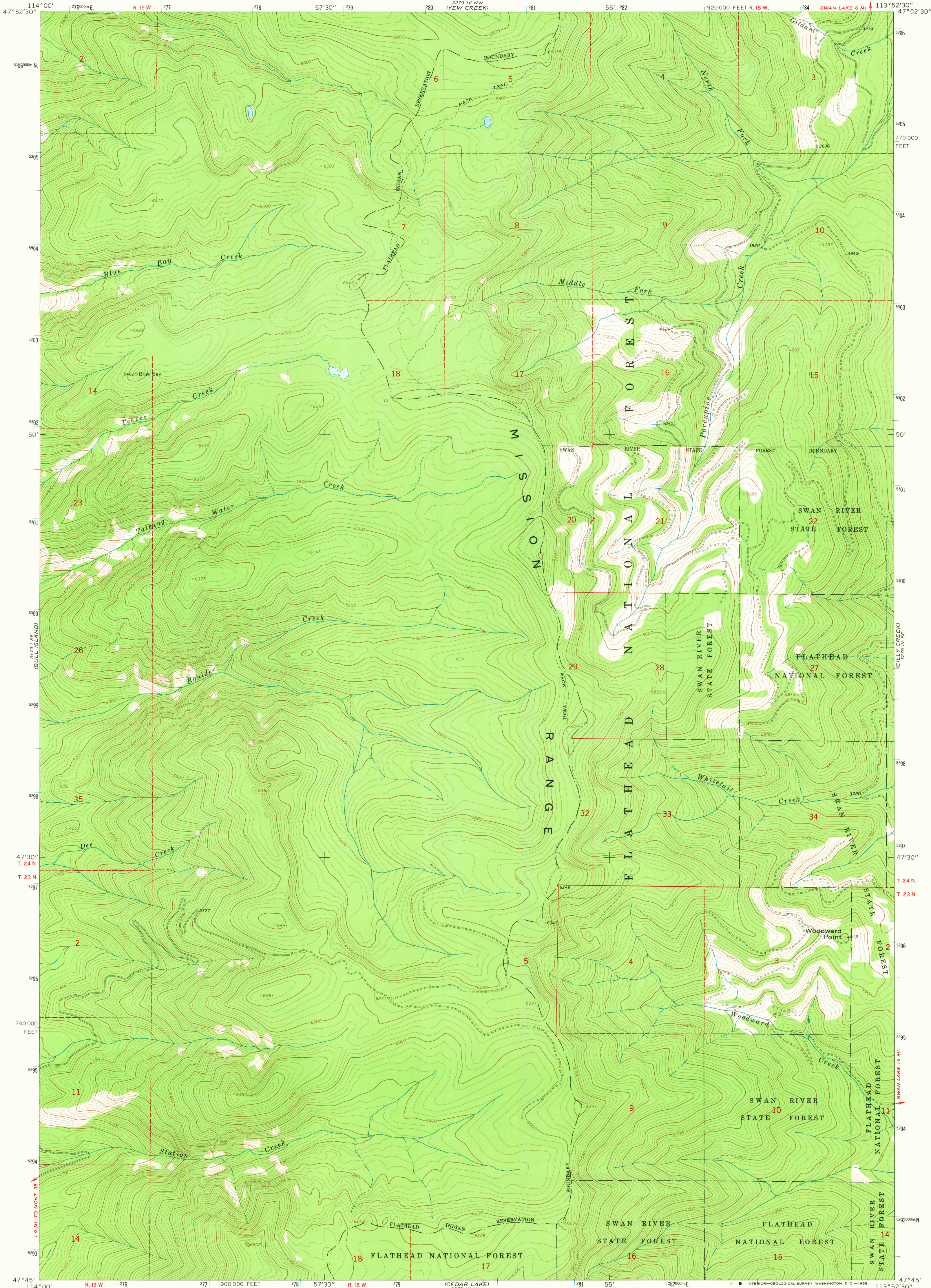


WOODS BAY

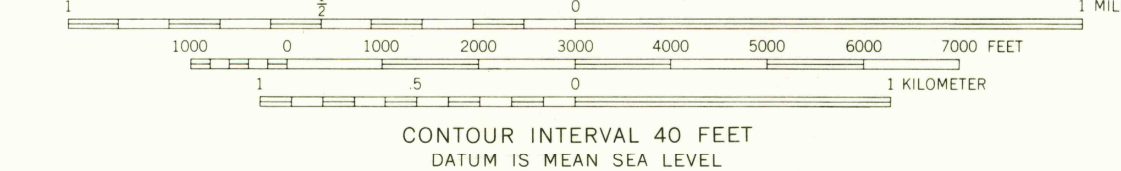
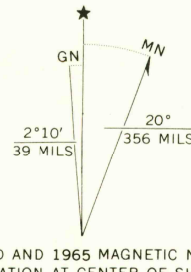
UNITED STATES
DEPARTMENT OF THE INTERIOR
GEOLOGICAL SURVEY

PORCUPINE CREEK QUADRANGLE
MONTANA-LAKE CO.
7.5 MINUTE SERIES (TOPOGRAPHIC)

SWAN LAKE



Mapped, edited, and published by the Geological Survey
Control by USGS and USC&GS
Topography by photogrammetric methods from aerial
photographs taken 1964. Field checked 1965
Polyconic projection. 1927 North American datum
10,000-foot grid based on Montana coordinate system,
central zone
1000-meter Universal Transverse Mercator grid ticks,
zone 12, shown in blue
Where omitted, land lines have not been established



ROAD CLASSIFICATION
Light-duty ————— Unimproved dirt - - - - -

PORCUPINE CREEK, MONT.
N4745-W11352.5/7.5

1965

AMS 3279 IV SW-SERIES V894

U.S.G.S.
FILE COPY
TOPOGRAPHIC DIVISION

USGS
Historical File
Topographic Division

2800

NOV 8 1968