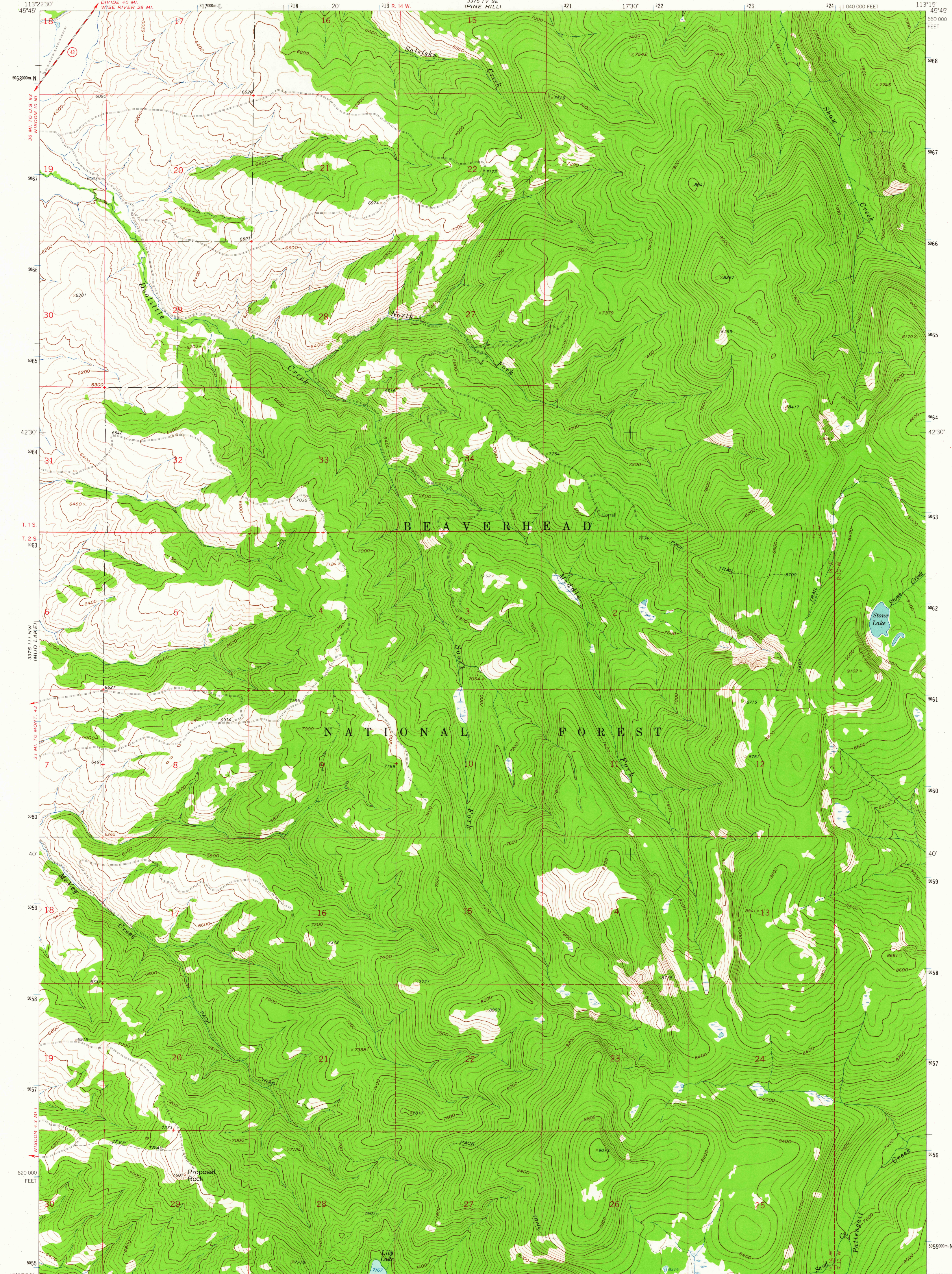


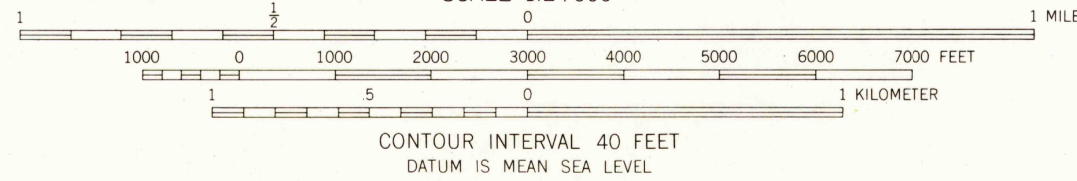
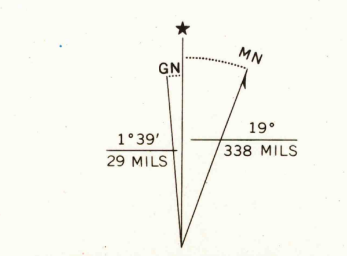
UNITED STATES  
DEPARTMENT OF THE INTERIOR  
GEOLOGICAL SURVEY

PROPOSAL ROCK QUADRANGLE  
MONTANA-BE AVERHEAD CO.  
7.5 MINUTE SERIES (TOPOGRAPHIC)



Mapped, edited, and published by the Geological Survey

Control by USGS and USC&GS  
Topography by photogrammetric methods from aerial photographs taken 1955. Field checked 1962  
Polyconic projection. 1927 North American datum  
10,000-foot grid based on Montana coordinate system, south zone  
1000-meter Universal Transverse Mercator grid ticks, zone 12, shown in blue  
Where omitted, land lines have not been established



ROAD CLASSIFICATION  
Medium duty ——— Unimproved dirt ———  
State Route

PROPOSAL ROCK, MONT.  
N4537 5 - W11315 7.5  
1962

SEP 2 1964  
2195  
U.S.G.S.  
FILE COPY  
TOPOGRAPHIC DIVISION