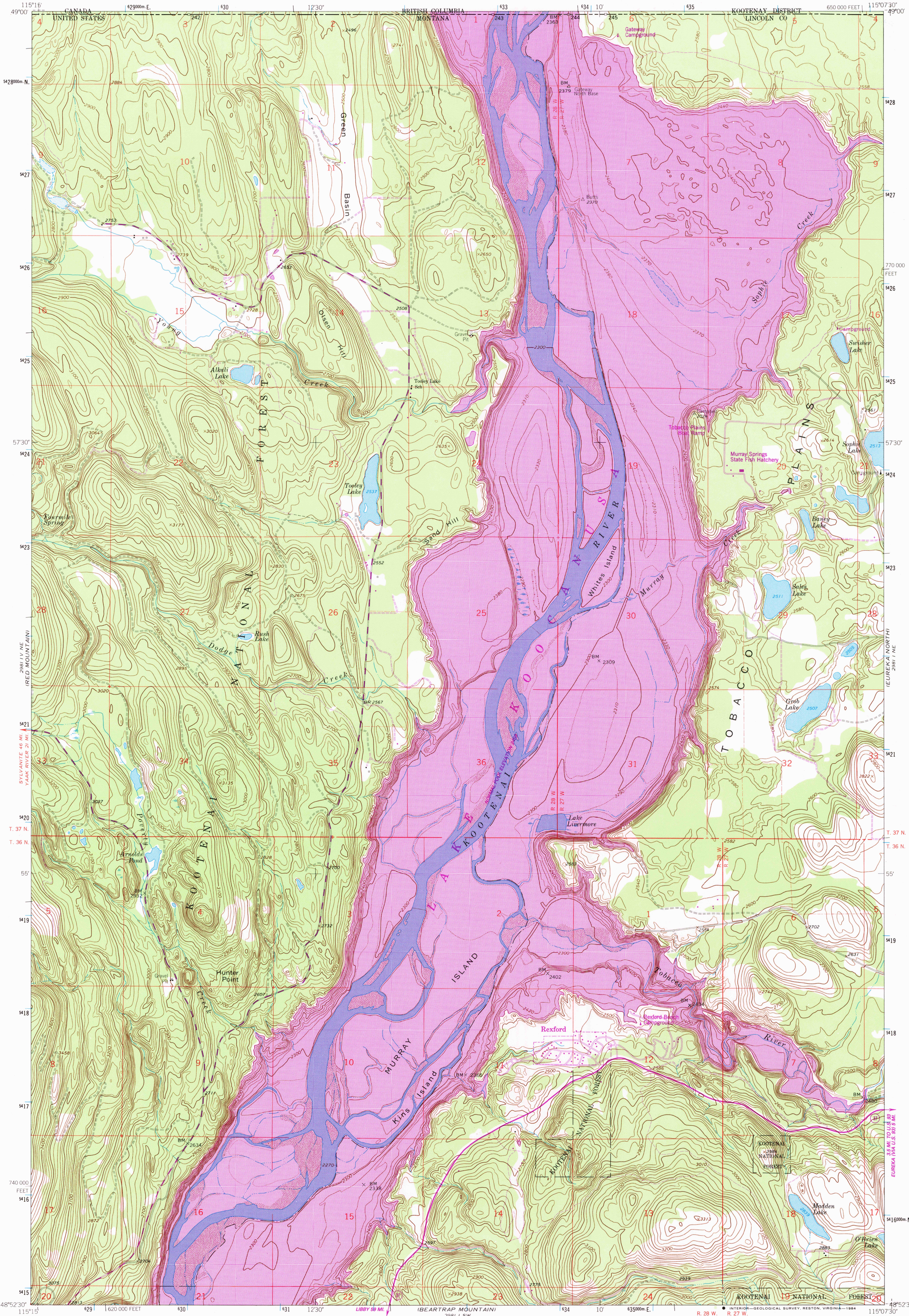


UNITED STATES
DEPARTMENT OF THE INTERIOR
GEOLOGICAL SURVEY

REXFORD QUADRANGLE
MONTANA
7.5 MINUTE SERIES (TOPOGRAPHIC)



Mapped, edited, and published by the Geological Survey
Control by USGS, NOS/NOAA and International Boundary Commission

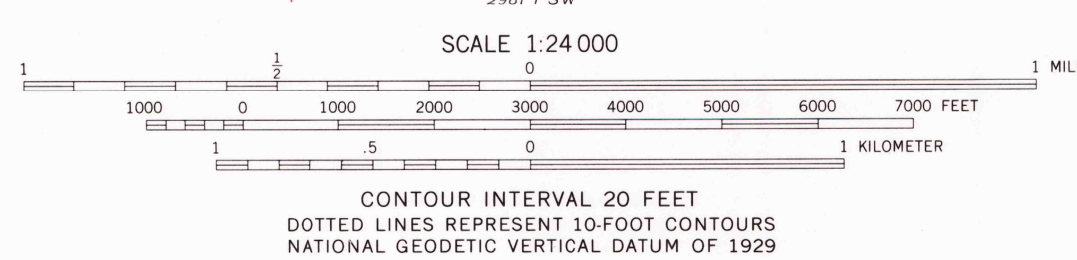
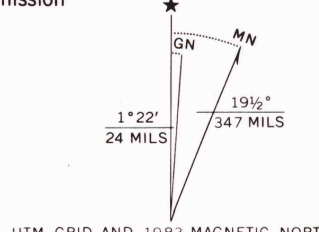
Topography by photogrammetric methods from aerial
photographs taken 1962. Field checked 1963.

Polyconic projection: 1927 North American Datum
10,000-foot grid based on Montana coordinate system, north zone
1000-meter Universal Transverse Mercator grid ticks,
zone 11, shown in blue.

Fine red dashed lines indicate selected fence lines.

There may be private inholdings within the boundaries
of the National or State reservations shown on this map.

To place on the predicted North American Datum 1983
move the projection lines 12 meters north and
73 meters east as shown by dashed corner ticks.



REXFORD, MONT.
48115-H2-TF-024

Revisions shown in purple and woodland
compiled from aerial photographs taken 1982
and other source data. Partial field check
by U.S. Forest Service. Map edited 1983.

1963
PHOTOGRAPHED 1983
DMA 2981 1 NW-SERIES V894

RETURN TO:
USGS NMD HISTORICAL MAP ARCHIVES

MAR 28 1984