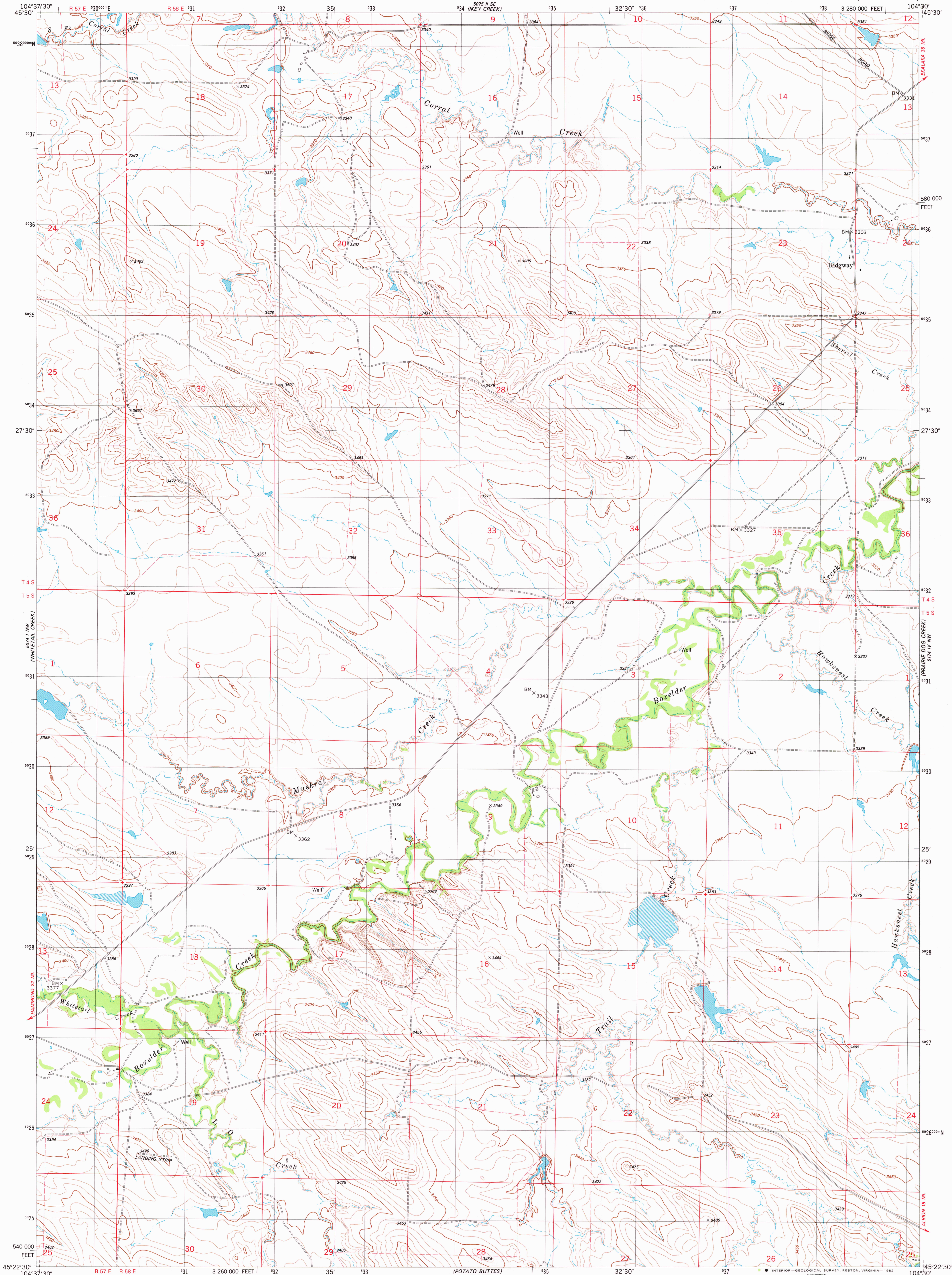


UNITED STATES  
DEPARTMENT OF THE INTERIOR  
GEOLOGICAL SURVEY

RIDGWAY QUADRANGLE  
MONTANA—CARTER CO.  
7.5 MINUTE SERIES (TOPOGRAPHIC)



Mapped, edited, and published by the Geological Survey

Control by USGS and NOS/NOAA

Topography by photogrammetric methods from aerial photographs taken 1973. Field checked 1975. Map edited 1982

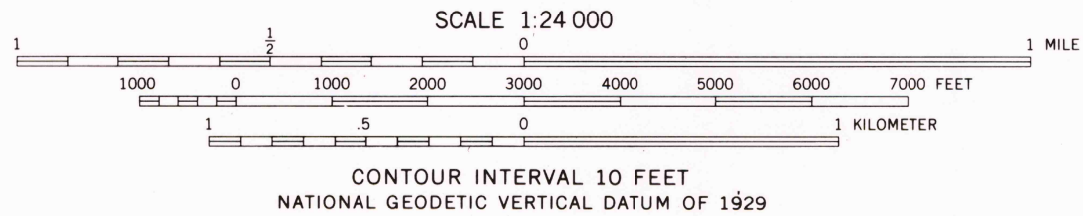
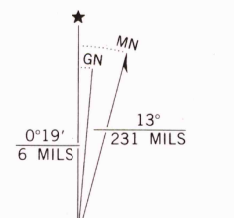
Projection and 10,000-foot grid ticks: Montana coordinate system, south zone (Lambert conformal conic)

1000-meter Universal Transverse Mercator grid, zone 13

1927 North American datum

To place on the predicted North American Datum 1983 move the projection lines 5 meters north and 41 meters east as shown by dashed corner ticks

Fine red dashed lines indicate selected fence lines



ROAD CLASSIFICATION	
Primary highway, hard surface	Light-duty road, hard or improved surface
Secondary highway, hard surface	Unimproved road
Interstate Route	U. S. Route
	State Route

RIDGWAY, MONT.  
N4522.5-W10430/7.5

1982

DMA 5074 I NE—SERIES V894

DEC 17 1982

2050

RETURN TO:  
USGS NMD HISTORICAL MAP ARCHIVES