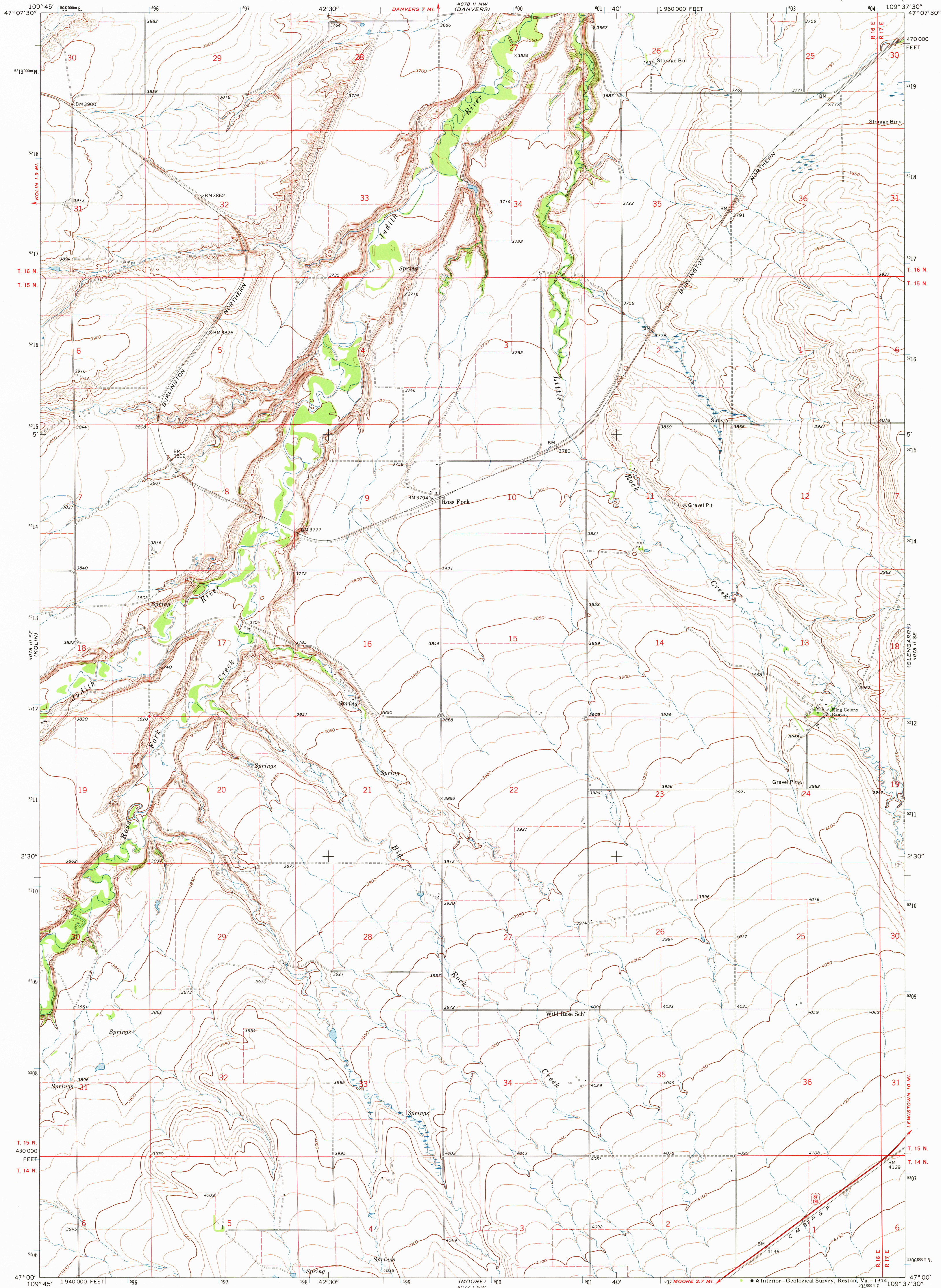


UNITED STATES
DEPARTMENT OF THE INTERIOR
GEOLOGICAL SURVEY

ROSS FORK QUADRANGLE
MONTANA—FERGUS CO.
7.5 MINUTE SERIES (TOPOGRAPHIC)



Mapped, edited, and published by the Geological Survey

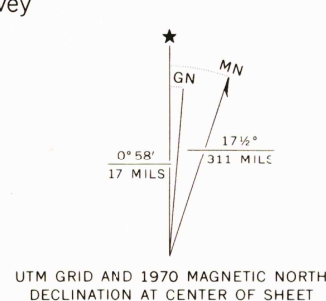
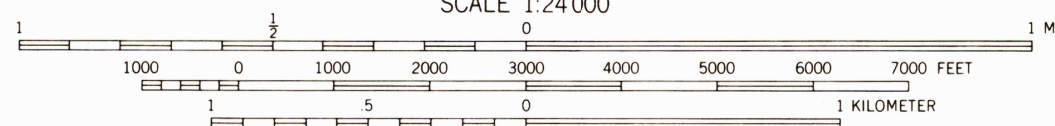
Control by USGS and USC&GS

Topography by photogrammetric methods from aerial
photographs taken 1968. Field checked 1970

Polyconic projection. 1927 North American datum
10,000-foot grid based on Montana coordinate system,
central zone

1000-meter Universal Transverse Mercator grid ticks,
zone 12, shown in blue

Fine red dashed lines indicate selected fence lines



QUADRANGLE LOCATION

USGS
HISTORICAL FILE
TOPOGRAPHIC DIVISION

ROAD CLASSIFICATION

- | | |
|------------------------------------|--|
| Primary highway,
hard surface | Light-duty road, hard
or improved surface |
| Secondary highway,
hard surface | Unimproved road |
| Interstate Route | U. S. Route |
| | State Route |

ROSS FORK, MONT.

N4700—W10937.5/7.5

1970

AMS 4078 II SW—SERIES V894