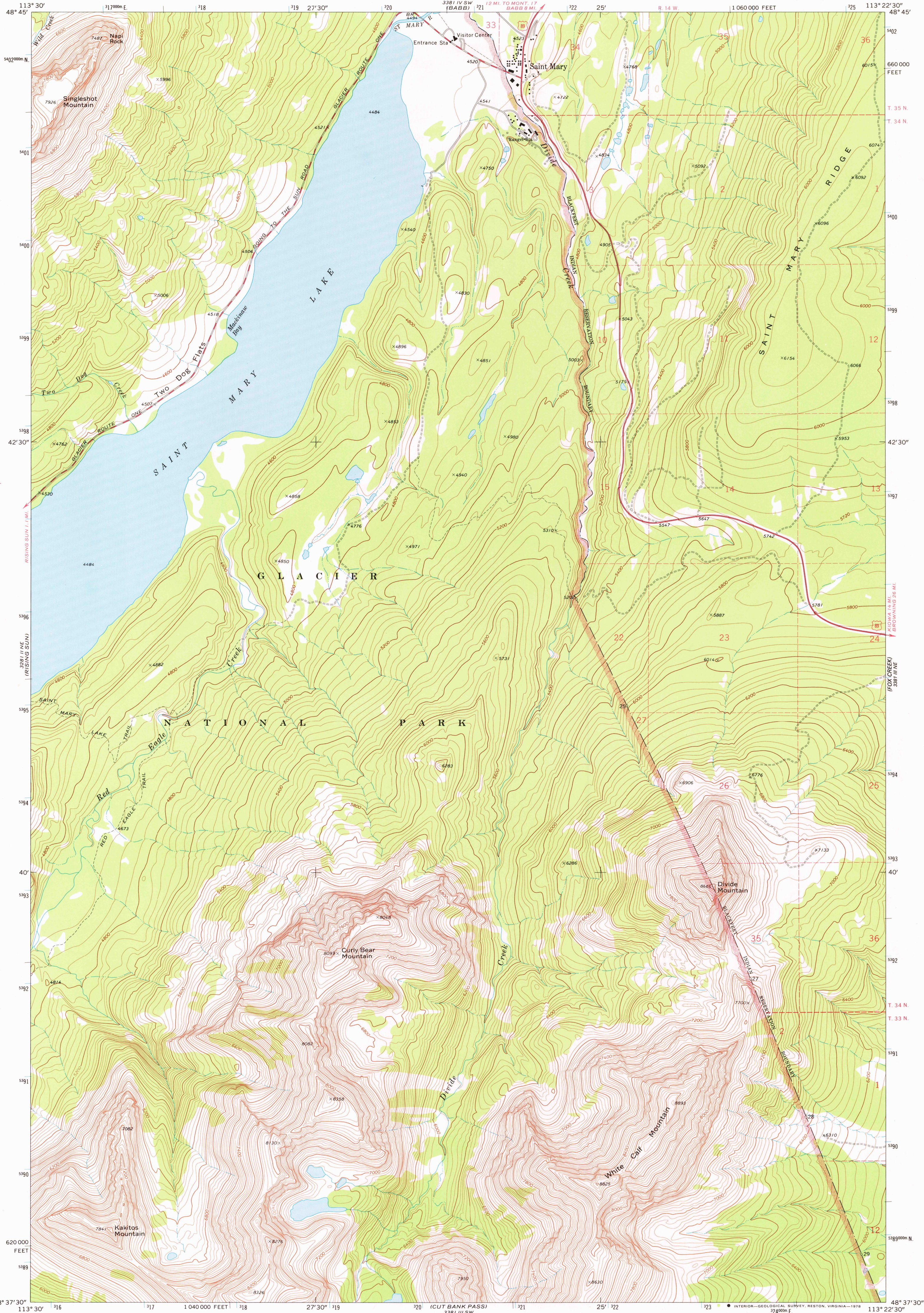
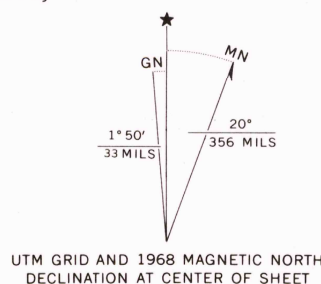


UNITED STATES
DEPARTMENT OF THE INTERIOR
GEOLOGICAL SURVEY

SAINT MARY QUADRANGLE
MONTANA—GLACIER CO.
7.5 MINUTE SERIES (TOPOGRAPHIC)



Mapped, edited, and published by the Geological Survey
Control by USGS and USC&GS
Topography by photogrammetric methods from aerial
photographs taken 1966. Field checked 1968
Polyconic projection. 1927 North American datum
10,000-foot grid based on Montana coordinate system,
north zone
1000-meter Universal Transverse Mercator grid ticks,
zone 12, shown in blue
Where omitted, land lines have not been established



SCALE 1:24000
CONTOUR INTERVAL 40 FEET
NATIONAL GEODETIC VERTICAL DATUM OF 1929

ROAD CLASSIFICATION
Primary highway, all weather, hard surface
Secondary highway, all weather, hard surface
Light-duty road, all weather, improved surface
Unimproved road, fair or dry weather
U. S. Route



USGS
Historical File
Topographic Division
SAINT MARY, MONT.
N4837.5-W11322.5/7.5
1968

JUL 28 1970

AMS 3381 III NW—SERIES V894