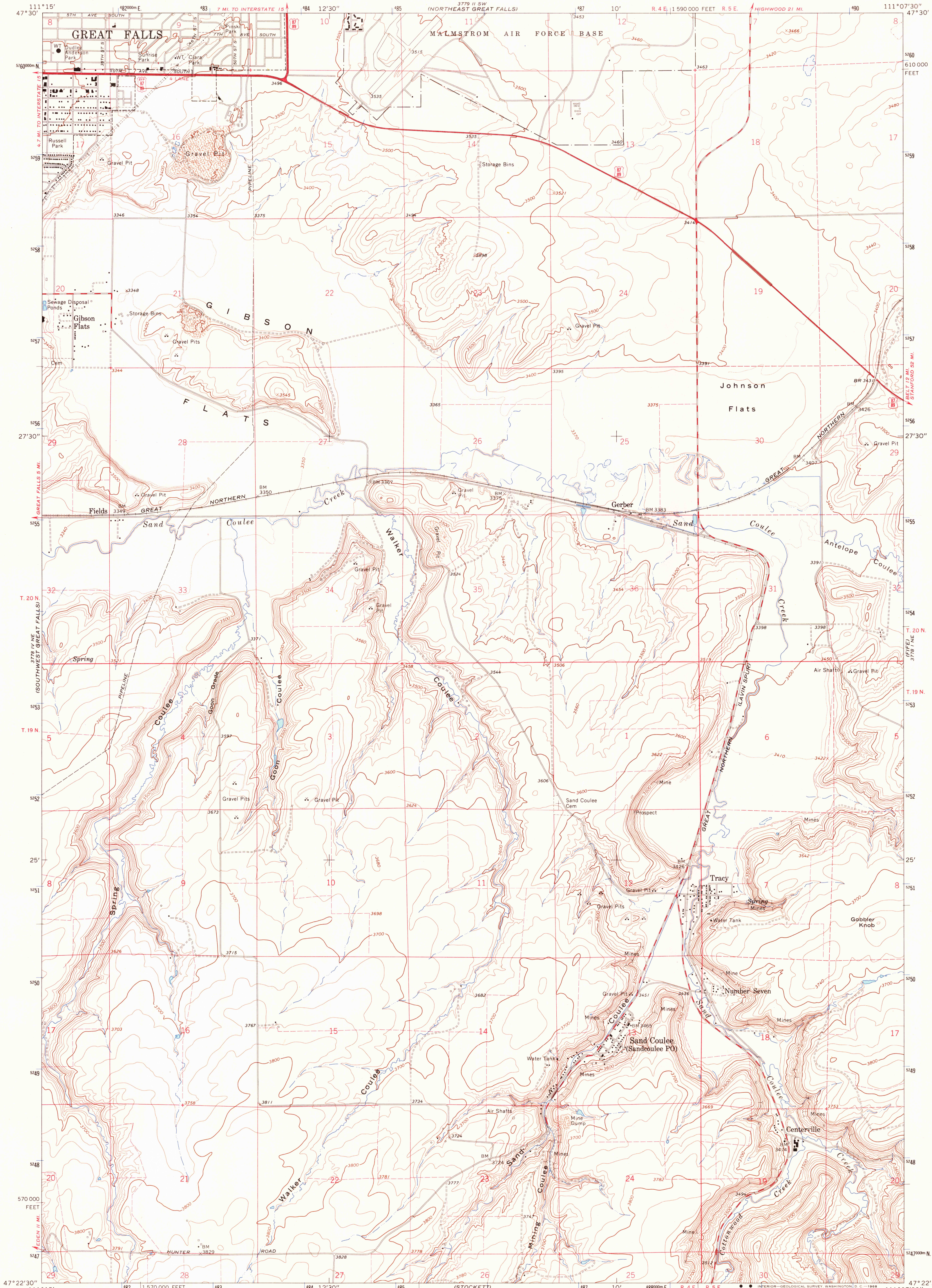


37°15' SE
40°15' SE
GREAT FALLS

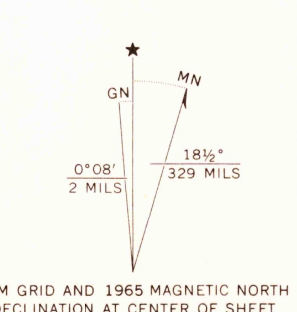
UNITED STATES
DEPARTMENT OF THE INTERIOR
GEOLOGICAL SURVEY

SOUTHEAST GREAT FALLS QUADRANGLE
MONTANA—CASCADE CO.
7.5 MINUTE SERIES (TOPOGRAPHIC)
NW/4 STOCKETT 15' QUADRANGLE

37°15' SE
40°15' SE
MORLEY DAM



Mapped, edited, and published by the Geological Survey
Control by USGS and USC&GS
Topography by photogrammetric methods from aerial
photographs taken 1964. Field checked 1965
Polyconic projection. 1927 North American datum
10,000-foot grid based on Montana coordinate system,
central zone
1000-meter Universal Transverse Mercator grid ticks,
zone 12, shown in blue
Red tint indicates areas in which only landmark
buildings are shown
Fine red dashed lines indicate selected fence lines



SCALE 1:24,000
1 0 1000 2000 3000 4000 5000 6000 7000 FEET
1 5 10 15 20 25 30 35 40 45 50 KILOMETERS
CONTOUR INTERVAL 20 FEET
DOTTED LINES REPRESENT 10-FOOT CONTOURS
DATUM IS MEAN SEA LEVEL
THIS MAP COMPLIES WITH NATIONAL MAP ACCURACY STANDARDS
FOR SALE BY U.S. GEOLOGICAL SURVEY, DENVER, COLORADO 80225, OR WASHINGTON, D. C. 20242
A FOLDER DESCRIBING TOPOGRAPHIC MAPS AND SYMBOLS IS AVAILABLE ON REQUEST



ROAD CLASSIFICATION
Heavy-duty ——— Light-duty ———
Medium-duty ——— Unimproved dirt ———
U.S. Route ———
SOUTHEAST GREAT FALLS, MONT.
NW/4 STOCKETT 15' QUADRANGLE
N4722.5—W1107.5/7.5
1965
AMS 3778 I NW—SERIES V894

USGS
Historical File
Topographic Division
U.S.G.S.
FILE COPY
TOPOGRAPHIC DIVISION
2685
DEC 12 1968