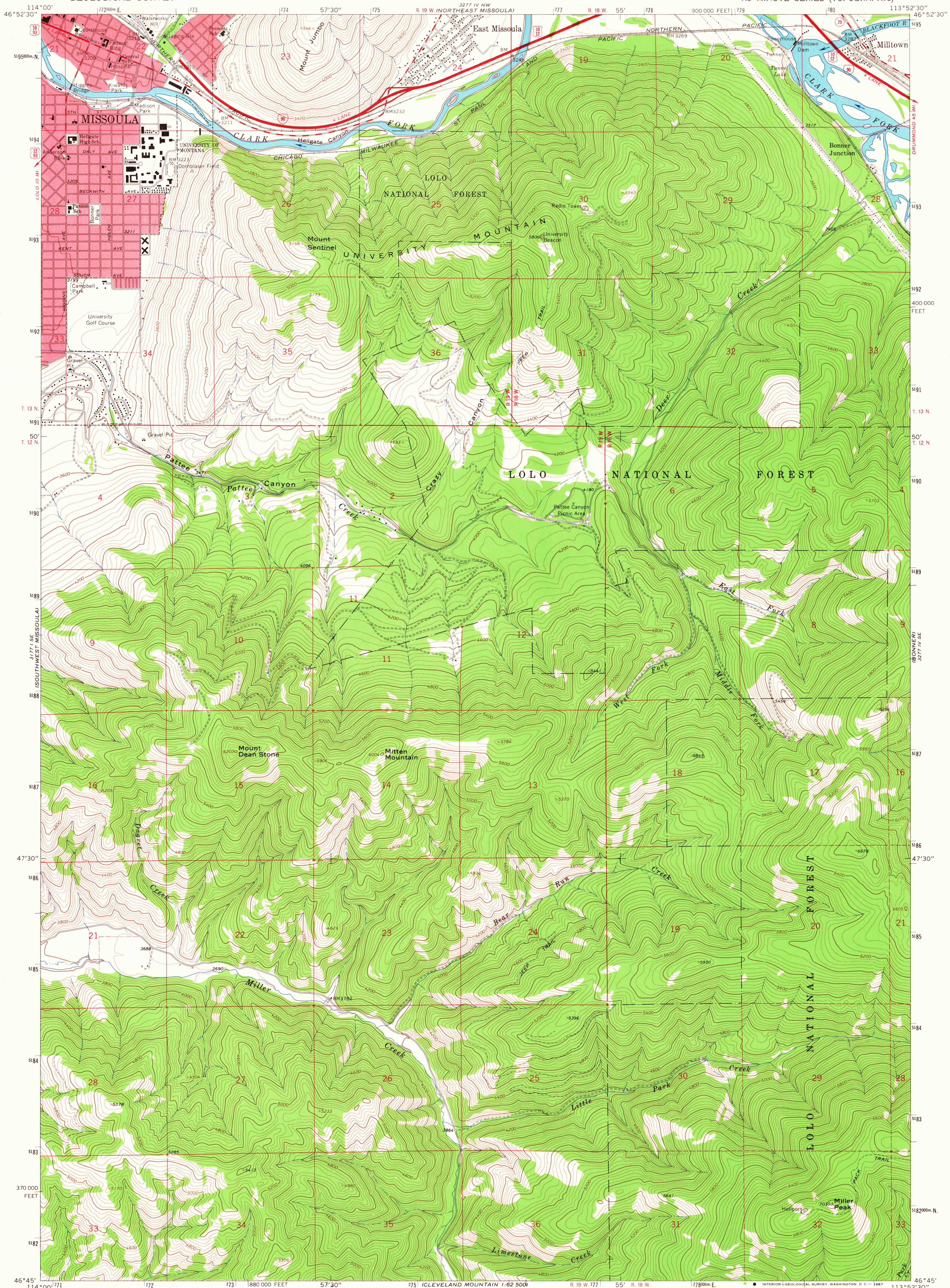


UNITED STATES
DEPARTMENT OF THE INTERIOR
GEOLOGICAL SURVEY

SOUTHEAST MISSOULA QUADRANGLE
MONTANA—MISSOULA CO.
7.5 MINUTE SERIES (TOPOGRAPHIC)



Mapped, edited, and published by the Geological Survey

Control by USGS and USC&GS

Topography by photogrammetric methods from aerial photographs

taken 1961. Field checked 1964

Polyconic projection. 1927 North American datum

10,000-foot grid based on Montana coordinate system, central zone

1000-meter Universal Transverse Mercator grid ticks,

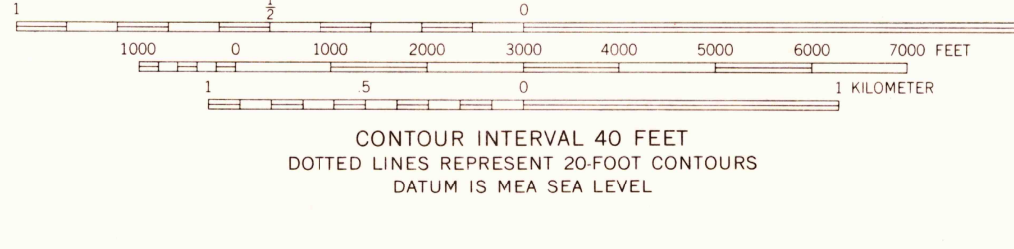
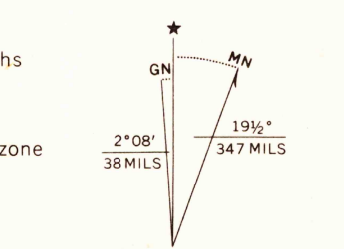
zone 12, shown in blue

Red tint indicates areas in which only landmark

buildings are shown

Fine red dashed lines indicate selected fence lines

Where omitted, land lines have not been established



ROAD CLASSIFICATION
Heavy-duty ——— Light-duty ———
Medium-duty ——— Unimproved dirt ———
Interstate Route U. S. Route State Route

SOUTHEAST MISSOULA, MONT.
N4645—W11352.5/7.5
1964

AMS 3277 IV SW—SERIES V894

USGS
Historical File
Topographic

5255
OCT 11 1967