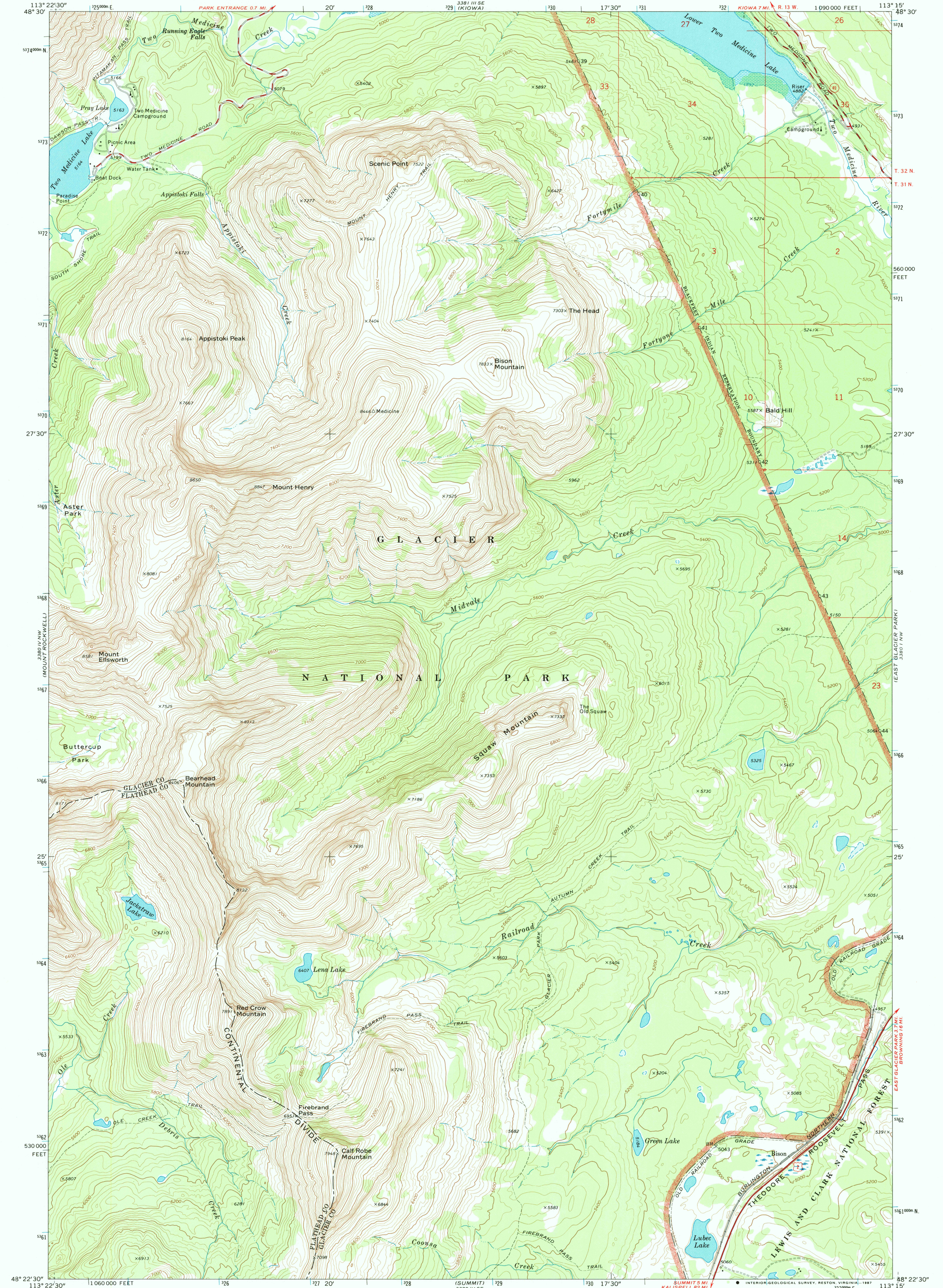
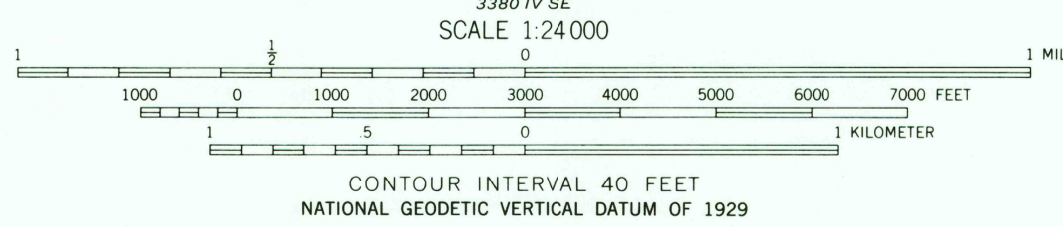
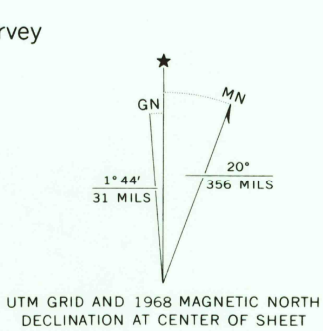


UNITED STATES  
DEPARTMENT OF THE INTERIOR  
GEOLOGICAL SURVEY

SQUAW MOUNTAIN QUADRANGLE  
MONTANA  
7.5 MINUTE SERIES (TOPOGRAPHIC)



Mapped, edited, and published by the Geological Survey  
Control by USGS and USC&GS  
Topography by photogrammetric methods from aerial  
photographs taken 1966. Field checked 1968  
Polyconic projection. 1927 North American Datum  
10,000-foot grid based on Montana coordinate system,  
north zone  
1000-meter Universal Transverse Mercator grid ticks,  
zone 12, shown in blue  
Where omitted, land lines have not been established  
Areas covered by dashed light-blue pattern are  
subject to controlled inundation  
To place on the predicted North American Datum 1983  
move the projection lines 11 meters north and  
68 meters east as shown by dashed corner ticks



ROAD CLASSIFICATION  
Primary highway, all weather. Light-duty road, all weather,  
hard surface. improved surface  
Secondary highway, all weather. Unimproved road, fair or dry  
weather  
U. S. Route State Route



SQUAW MOUNTAIN, MONT.  
48113-03-TF-024

There may be private inholdings within the boundaries of  
the National or State reservations shown on this map  
DMA 3380 IV NE-SERIES V804

