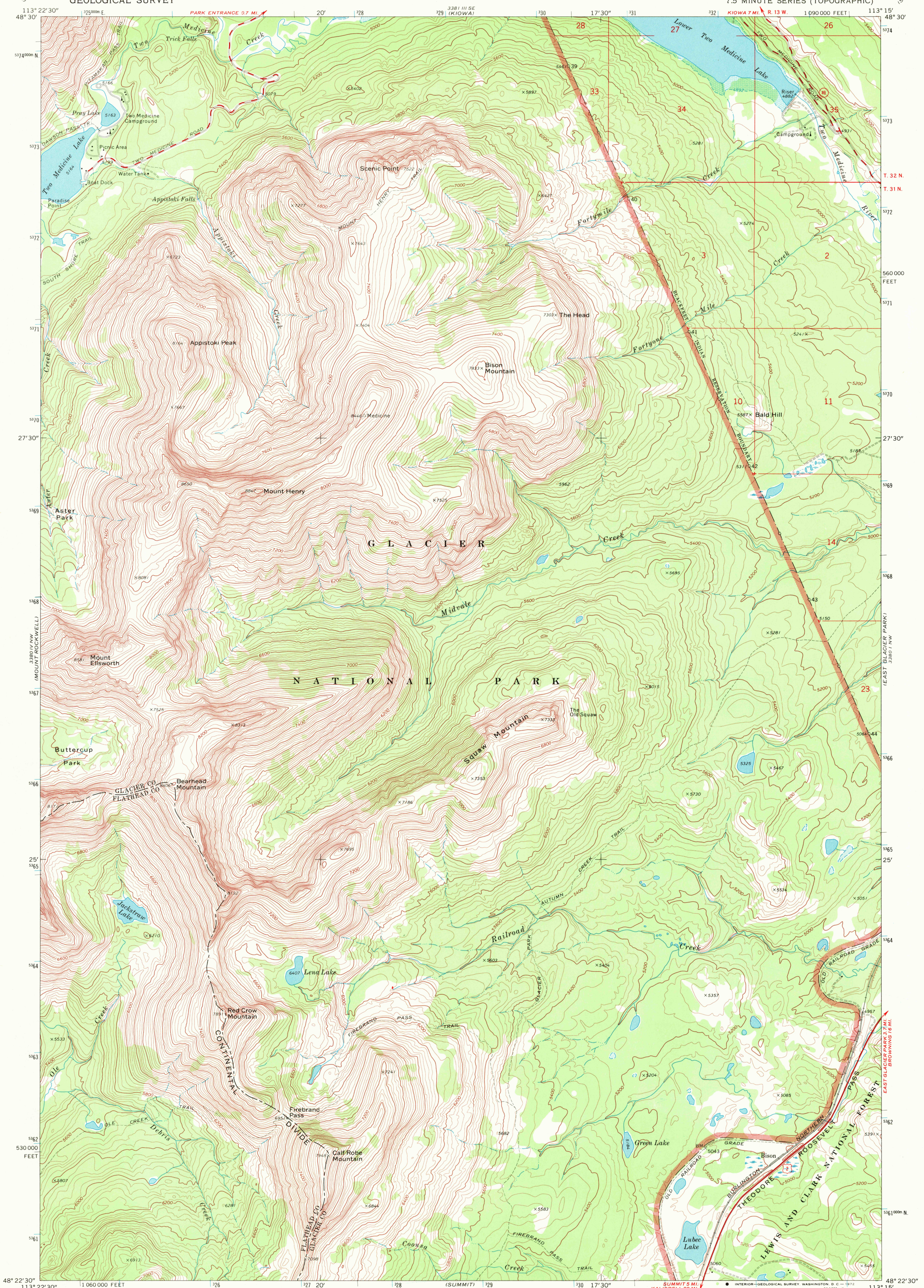


UNITED STATES  
DEPARTMENT OF THE INTERIOR  
GEOLOGICAL SURVEY

SQUAW MOUNTAIN QUADRANGLE  
MONTANA  
7.5 MINUTE SERIES (TOPOGRAPHIC)



Mapped, edited, and published by the Geological Survey

Control by USGS and USC&GS

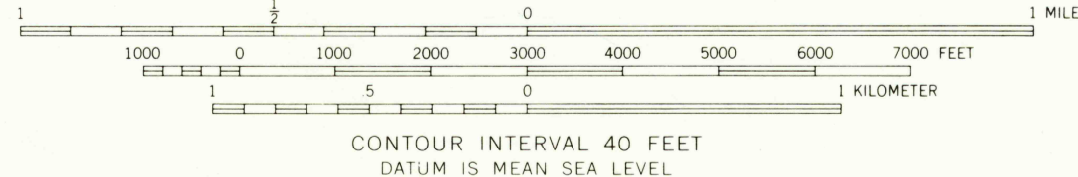
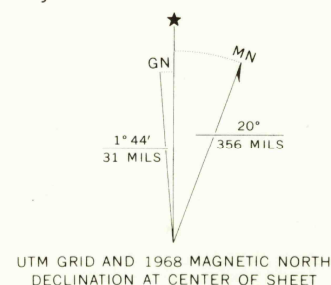
Topography by photogrammetric methods from aerial photographs taken 1966. Field checked 1968

Polyconic projection. 1927 North American datum 10,000-foot grid based on Montana coordinate system, north zone

1000-meter Universal Transverse Mercator grid ticks, zone 12, shown in blue

Where omitted, land lines have not been established

Areas covered by dashed light-blue pattern are subject to controlled inundation



ROAD CLASSIFICATION	
Primary highway, all weather, hard surface	Light-duty road, all weather, improved surface
Secondary highway, all weather, hard surface	Unimproved road, fair or dry weather
U. S. Route	State Route

SQUAW MOUNTAIN, MONT.  
N4822.5-W11315.7.5

1968

AMS 3380 IV NE-SERIES V894

USGS  
HISTORICAL FILE  
TOPOGRAPHIC DIVISION

JAN 25 1972

2305