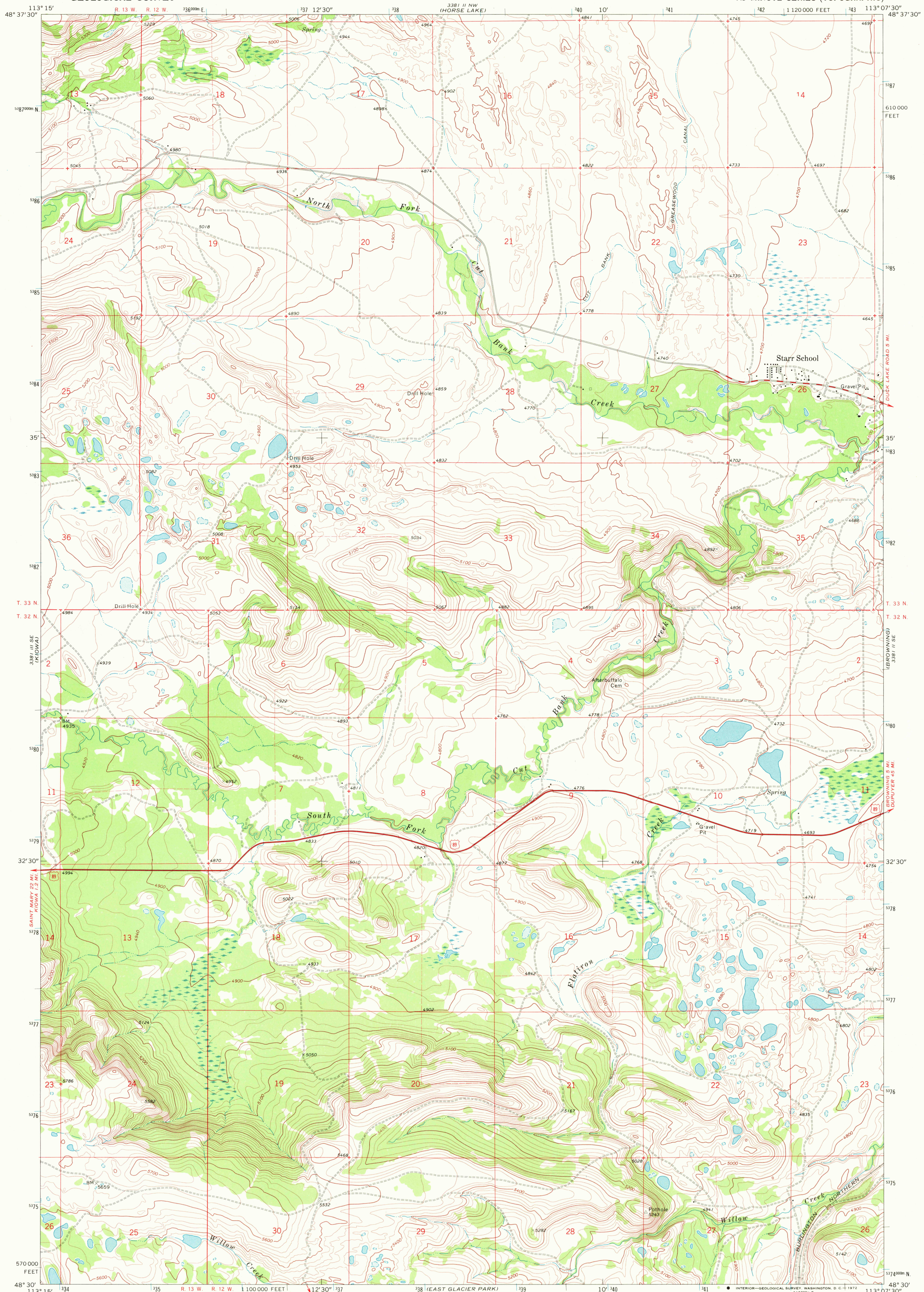


UNITED STATES  
DEPARTMENT OF THE INTERIOR  
GEOLOGICAL SURVEY

STARR SCHOOL QUADRANGLE  
MONTANA—GLACIER CO.  
7.5 MINUTE SERIES (TOPOGRAPHIC)



Mapped, edited, and published by the Geological Survey

Control by USGS and USC&GS

Topography by photogrammetric methods from aerial photographs taken 1966. Field checked 1968

Polyconic projection. 1927 North American datum  
10,000-foot grid based on Montana coordinate system,  
north zone  
1000-meter Universal Transverse Mercator grid ticks,  
zone 12, shown in blue

Fine red dashed lines indicate selected fence lines

Entire area lies within the boundary  
of the Blackfeet Indian Reservation

SCALE 1:24,000

1 1000 2000 3000 4000 5000 6000 7000 FEET

1 5 10 KILOMETER

CONTOUR INTERVAL 20 FEET  
DATUM IS MEAN SEA LEVEL



QUADRANGLE LOCATION

ROAD CLASSIFICATION

Primary highway, hard surface  
Secondary highway, hard surface  
Unimproved road  
Light-duty road, hard or improved surface  
Unimproved road

Interstate Route U. S. Route State Route

STARR SCHOOL, MONT.  
N4830-W11307.5/7.5

1968

AMG 3381 II SW—SERIES V894

USGS  
HISTORICAL FILE  
TOPOGRAPHIC DIVISION

JUN 02 1972

3085