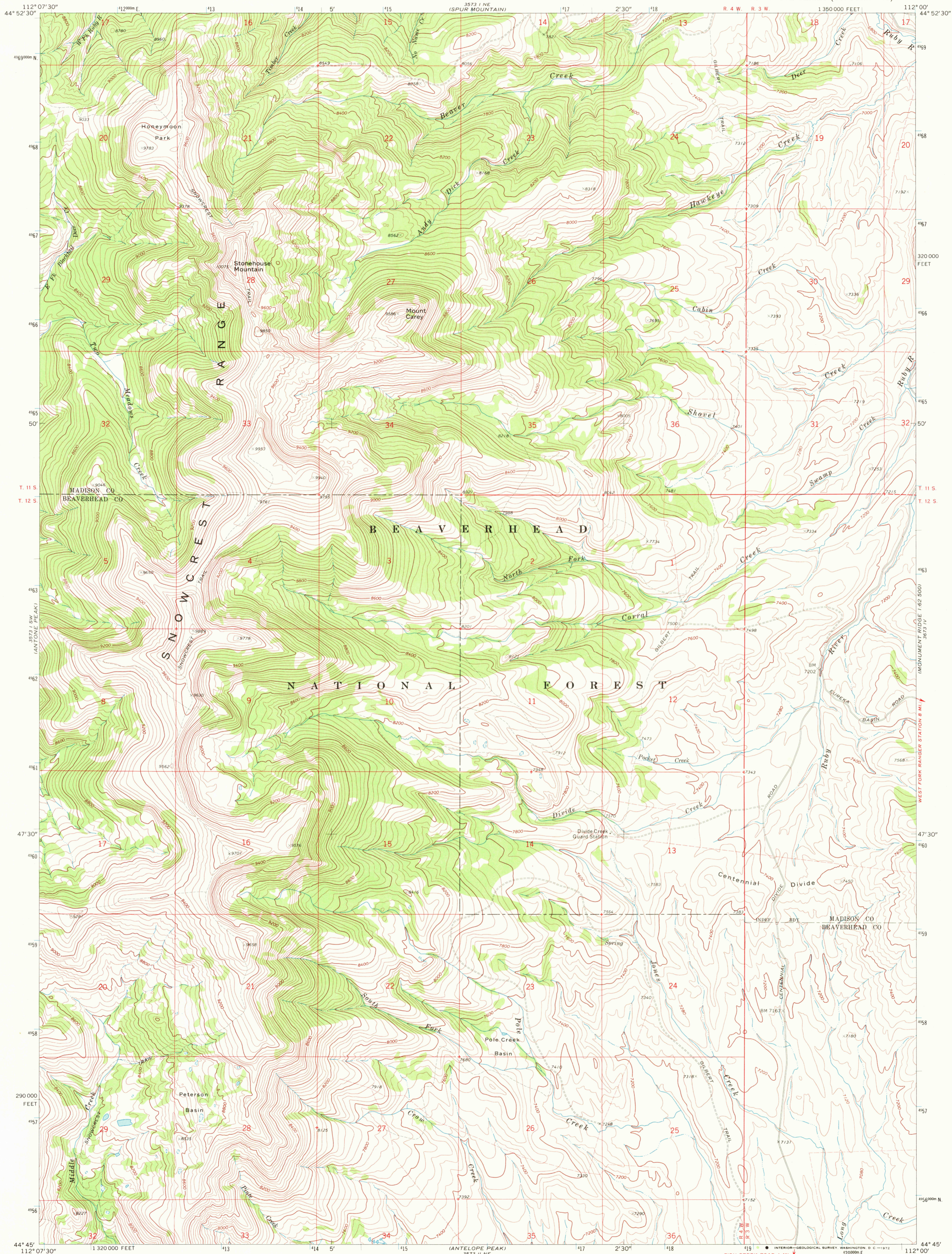


UNITED STATES  
DEPARTMENT OF THE INTERIOR  
GEOLOGICAL SURVEY

STONEHOUSE MOUNTAIN QUADRANGLE  
MONTANA  
7.5 MINUTE SERIES (TOPOGRAPHIC)



Mapped, edited, and published by the Geological Survey

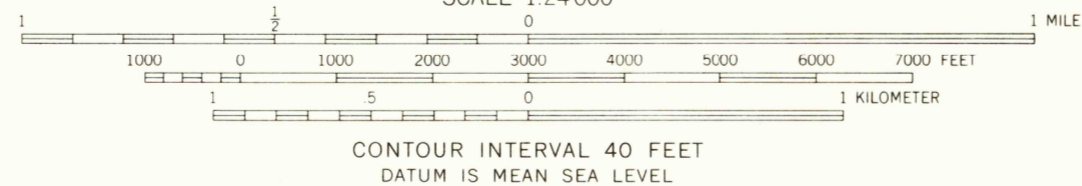
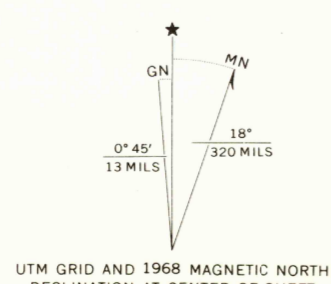
Control by USGS and USC&GS

Topography by photogrammetric methods from aerial photographs taken 1967. Field checked 1968

Polyconic projection. 1927 North American datum  
10,000-foot grid based on Montana coordinate system,  
south zone  
1000-meter Universal Transverse Mercator grid ticks,  
zone 12, shown in blue

Fine red dashed lines indicate selected fence lines

Where omitted, land lines have not been established



ROAD CLASSIFICATION  
Light-duty road, all weather, Unimproved road, fair or dry  
improved surface weather

STONEHOUSE MOUNTAIN, MONT.  
N4445-W11200/7.5

1968

AMS 3573 I SE - SERIES V894

USGS  
HISTORICAL FILE  
TOPOGRAPHIC DIVISION

APR 24 1972

2135