

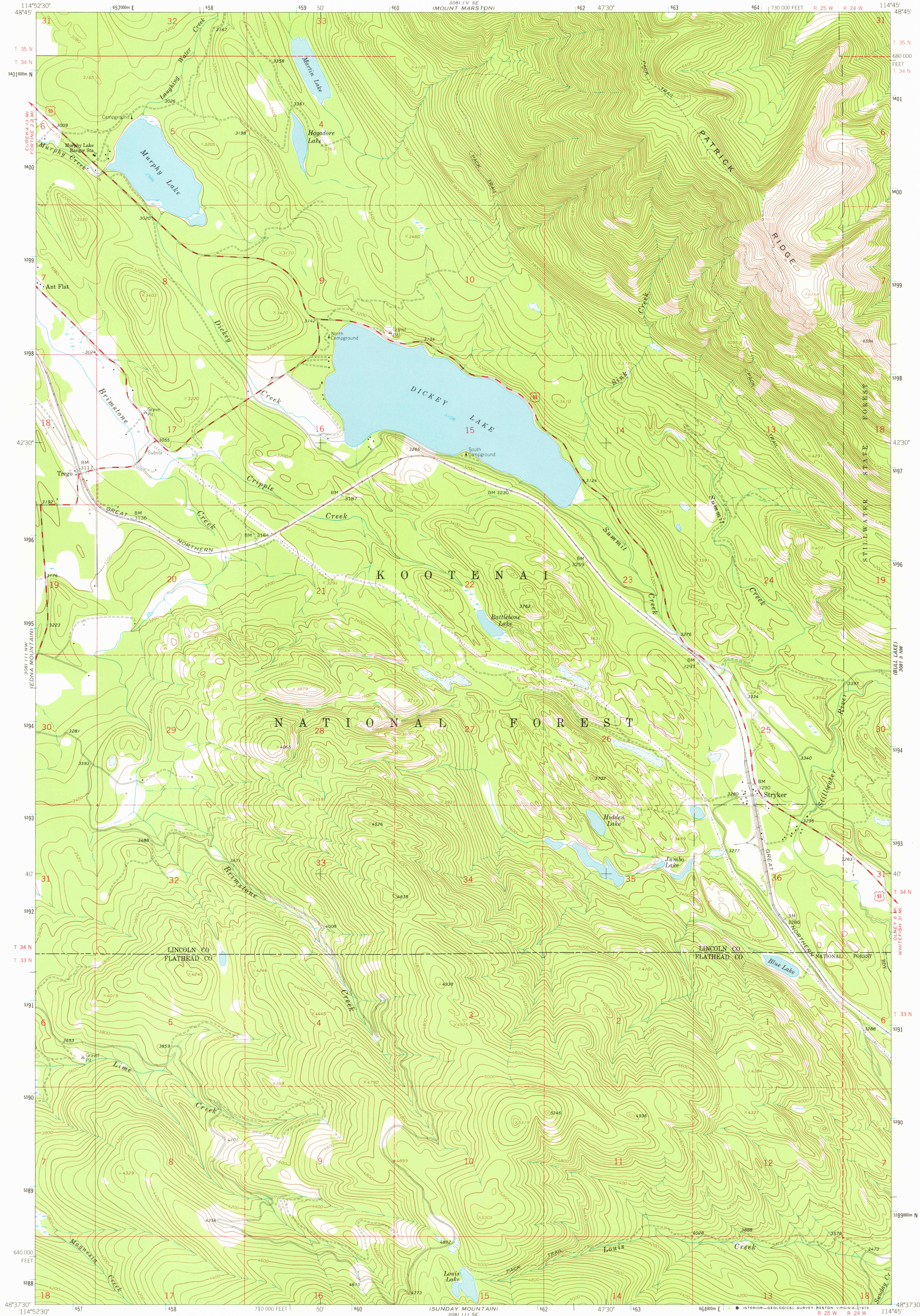
5081 V NW
(10° 10' 15" N)

UNITED STATES
DEPARTMENT OF THE INTERIOR
GEOLOGICAL SURVEY



STRYKER QUADRANGLE
MONTANA
7.5 MINUTE SERIES (TOPOGRAPHIC)

5081 I SW
(10° 10' 15" N)



Mapped, edited, and published by the Geological Survey

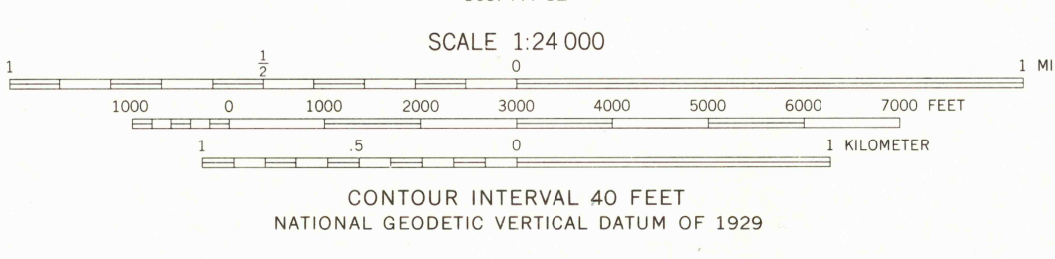
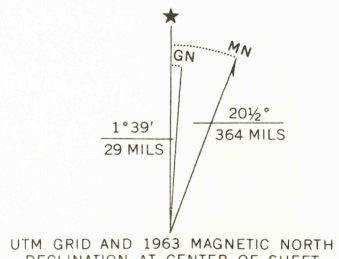
Control by USGS and USC&GS

Topography by photogrammetric methods from aerial photographs taken 1962. Field checked 1963

Polycyclic projection. 1927 North American datum. 10,000-foot grid based on Montana coordinate system, north zone. 1000-meter Universal Transverse Mercator grid ticks, zone 11, shown in blue.

Where omitted, land lines have not been established.

There may be private inholdings within the boundaries of the National or State reservations shown on this map.



ROAD CLASSIFICATION
Medium-duty ——— Light-duty ———
Unimproved dirt ———
U.S. Route

USGS
Historical File
Topographic Division
STRYKER, MONT.
N4837 5 - W11445 7.5

1963

DMA 3081 III NE-SERIES V884

THIS MAP COMPLIES WITH NATIONAL MAP ACCURACY STANDARDS.
FOR SALE BY U. S. GEOLOGICAL SURVEY, DENVER, COLORADO 80225, OR RESTON, VIRGINIA 22092
A FOLDER DESCRIBING TOPOGRAPHIC MAPS AND SYMBOLS IS AVAILABLE ON REQUEST

JAN - 8 1980

900