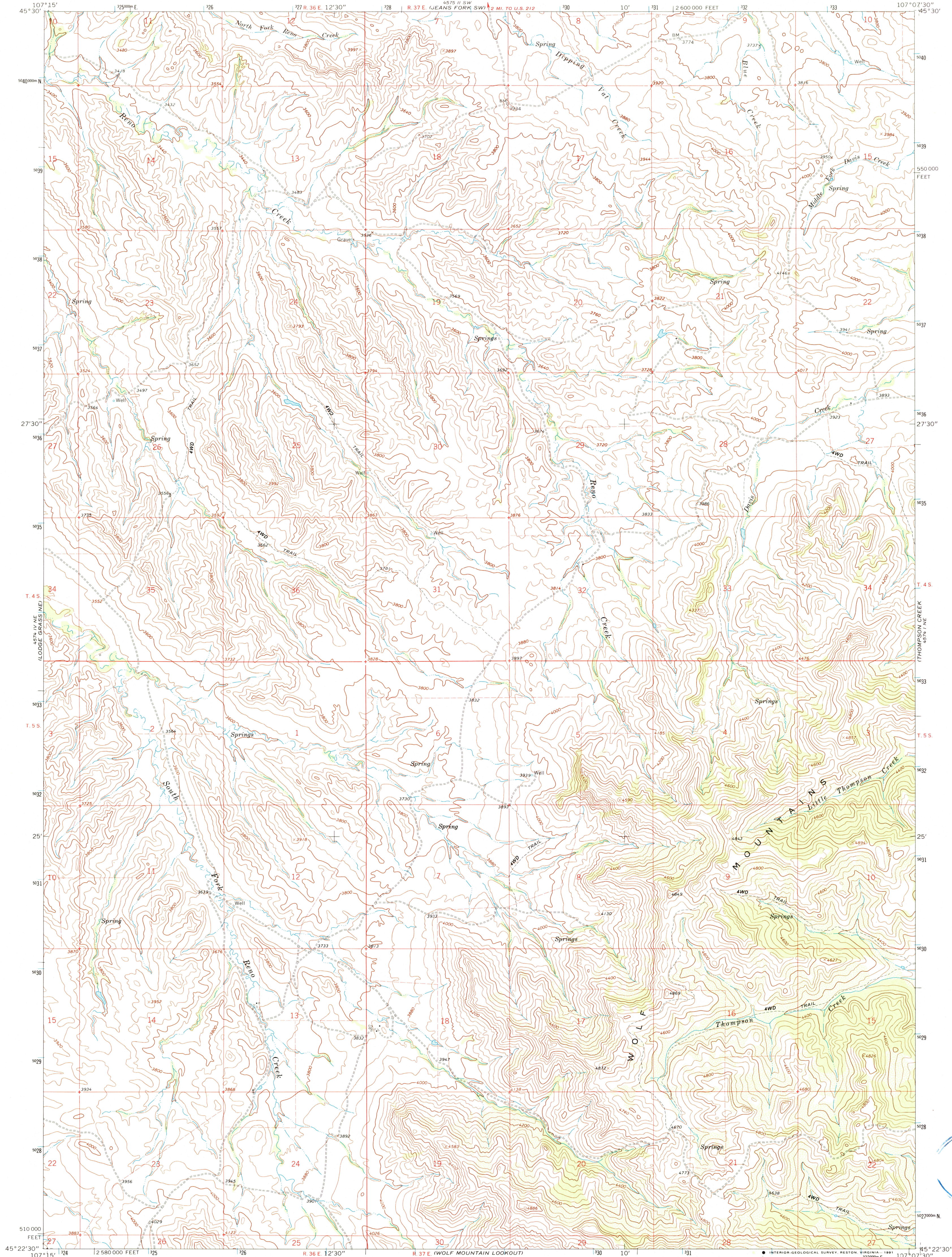
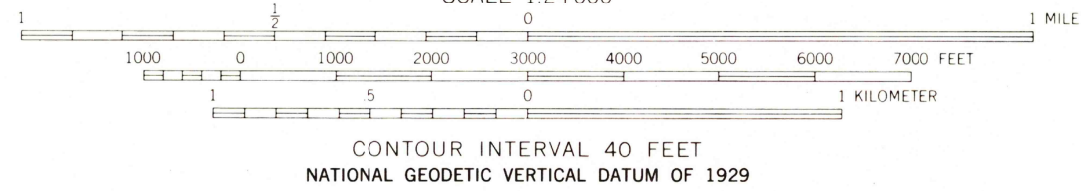
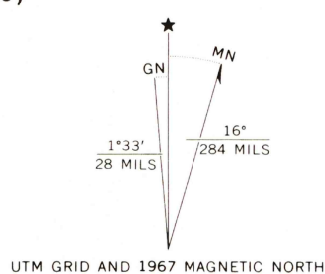


UNITED STATES
DEPARTMENT OF THE INTERIOR
GEOLOGICAL SURVEY

THOMPSON CREEK NW QUADRANGLE
MONTANA-BIG HORN CO.
7.5 MINUTE SERIES (TOPOGRAPHIC)



Mapped, edited, and published by the Geological Survey
Control by USGS and NOS/NOAA
Topography by photogrammetric methods from aerial photographs
taken 1966. Field checked 1967
Polyconic projection. 1927 North American Datum
10,000-foot grid based on Montana coordinate system, south zone
1000-meter Universal Transverse Mercator grid ticks, zone 13
shown in blue
To place on the predicted North American Datum 1983
move the projection lines 8 meters north and 51 meters
east as shown by dashed corner ticks
Entire area lies within the boundary of the Crow Indian Reservation



THOMPSON CREEK NW, MONT.
45107-D2-TF-024

ROAD CLASSIFICATION
Unimproved dirt =-----

1967

DMA 4574 I NW-SERIES V894

