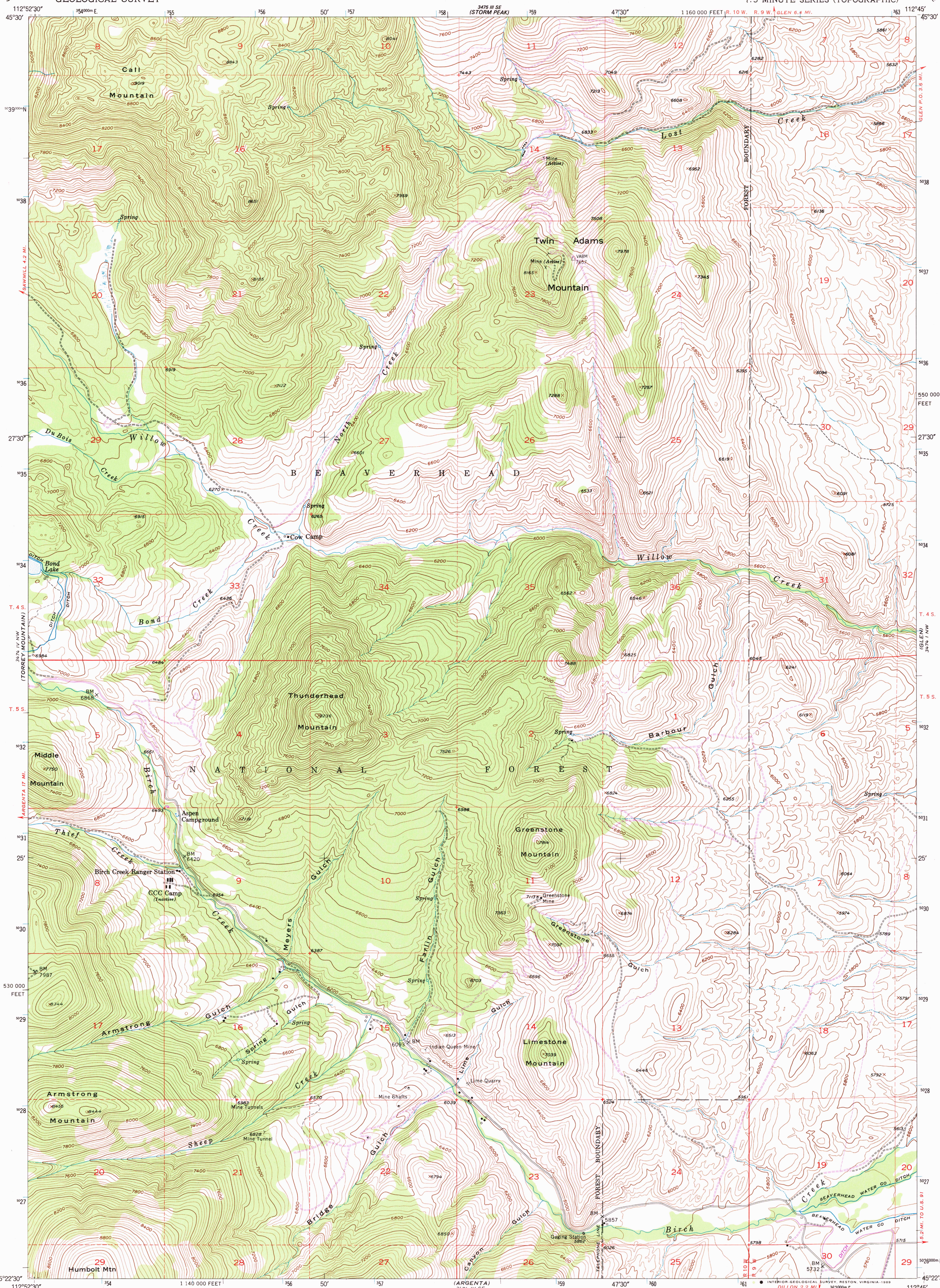


UNITED STATES
DEPARTMENT OF THE INTERIOR
GEOLOGICAL SURVEY

TWIN ADAMS MOUNTAIN QUADRANGLE
MONTANA-BEAVERHEAD CO.
7.5 MINUTE SERIES (TOPOGRAPHIC)



Mapped, edited, and published by the Geological Survey

Control by USGS and NOS/NOAA

Topography from aerial photographs by multiplex methods

Aerial photographs taken 1950. Field check 1952

Polyconic projection. 1927 North American Datum

10,000-foot grid based on Montana coordinate system,

south zone

Dashed land lines indicate approximate locations

All mining features are inactive unless otherwise noted

1000-meter Universal Transverse Mercator grid ticks,

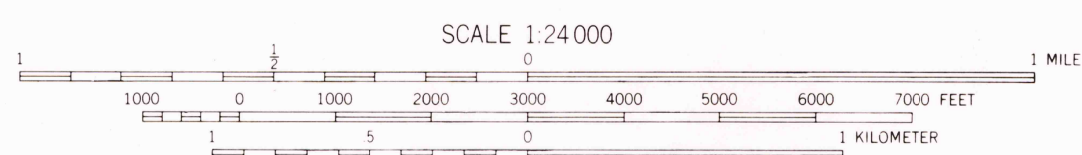
zone 12, shown in blue

To place on the predicted North American Datum 1983

move the projection lines 12 meters north and

68 meters east as shown by dashed corner ticks

UTM GRID AND 1983 MAGNETIC NORTH
DECLINATION AT CENTER OF SHEET
There may be private inholdings within
the boundaries of the National or State
reservations shown on this map



THIS MAP COMPLIES WITH NATIONAL MAP ACCURACY STANDARDS
FOR SALE BY U.S. GEOLOGICAL SURVEY
DENVER, COLORADO 80225, OR RESTON, VIRGINIA 22092
A FOLDER DESCRIBING TOPOGRAPHIC MAPS AND SYMBOLS IS AVAILABLE ON REQUEST



TWIN ADAMS MOUNTAIN, MONT.
45112-D7-TF-024

Revisions shown in purple and woodland
compiled from aerial photographs taken 1984
and other source data. Partial field check
by U.S. Forest Service. Map edited 1988

1982
PHOTOREVISED 1988
DMA 3474 IV NE-SERIES V894

RECD FILE COPY

APR 28 1989

USGS NHD HISTORICAL MAP