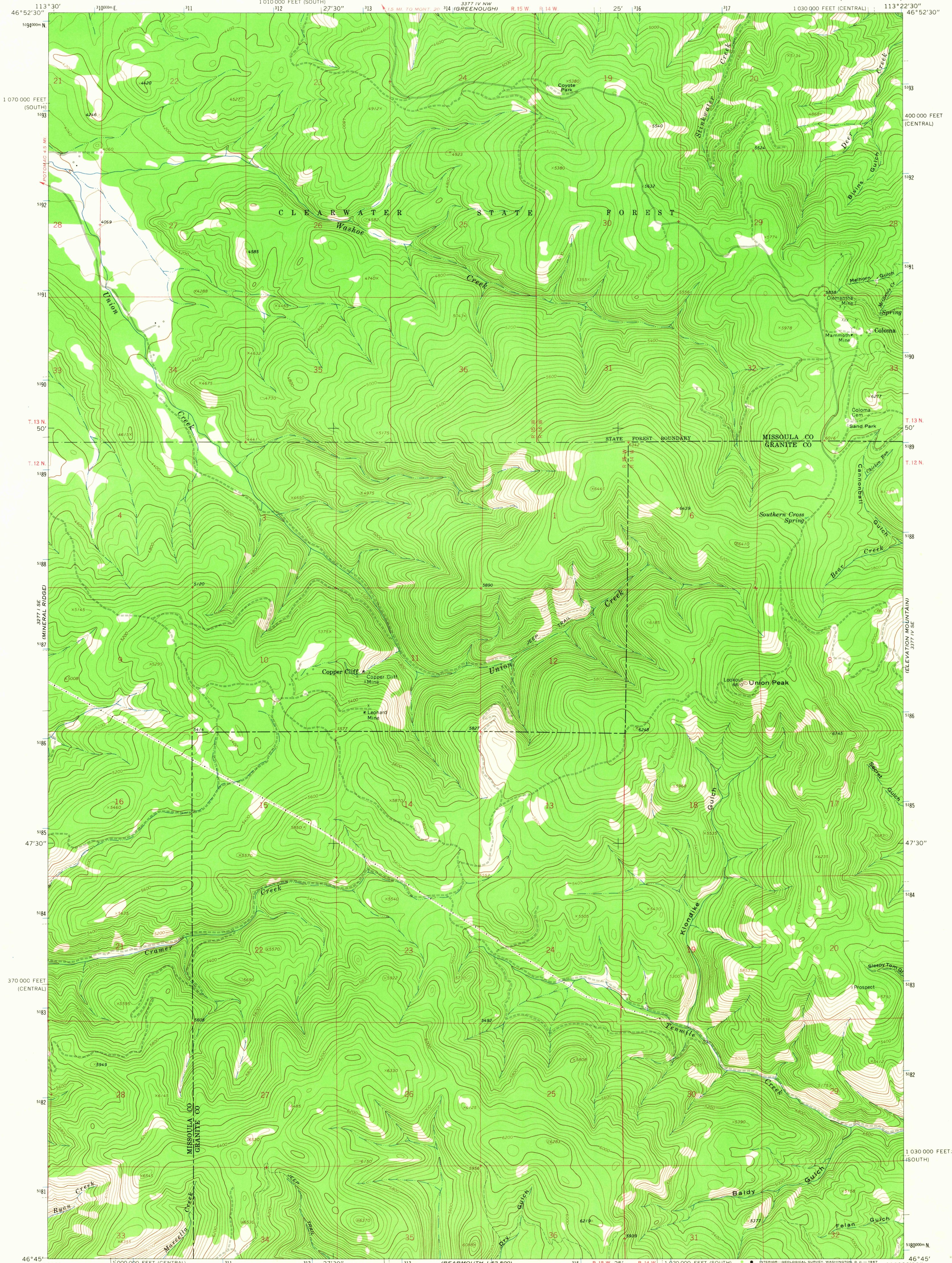


3277 IV SW (TOPOGRAPHIC)

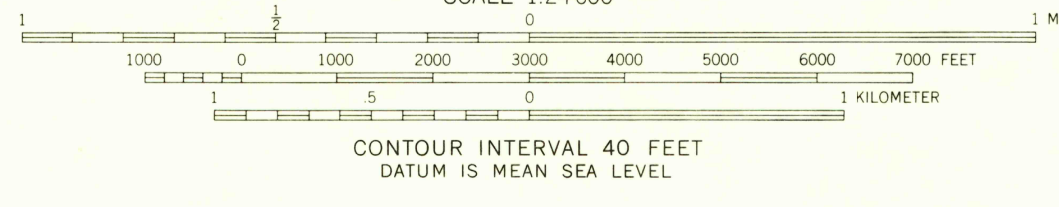
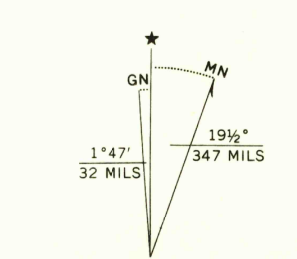
UNITED STATES  
DEPARTMENT OF THE INTERIOR  
GEOLOGICAL SURVEY

UNION PEAK QUADRANGLE  
MONTANA  
7.5 MINUTE SERIES (TOPOGRAPHIC)

3277 IV NE (BATA MOUNTAIN)



Mapped, edited, and published by the Geological Survey  
Control by USGS and USC&GS  
Topography by photogrammetric methods from aerial  
photographs taken 1961. Field checked 1965  
Polyconic projection. 1927 North American datum  
10,000-foot grids based on Montana coordinate system,  
central and south zones  
1000-meter Universal Transverse Mercator grid ticks,  
zone 12, shown in blue



ROAD CLASSIFICATION  
Light-duty ————— Unimproved dirt —————  
UNION PEAK, MONT.  
N4645—W11322.5/7.5  
1965  
AMS 3277 IV SW—SERIES V894

USGS  
Historical File  
Topographic Division

3250  
AUG 28 1967