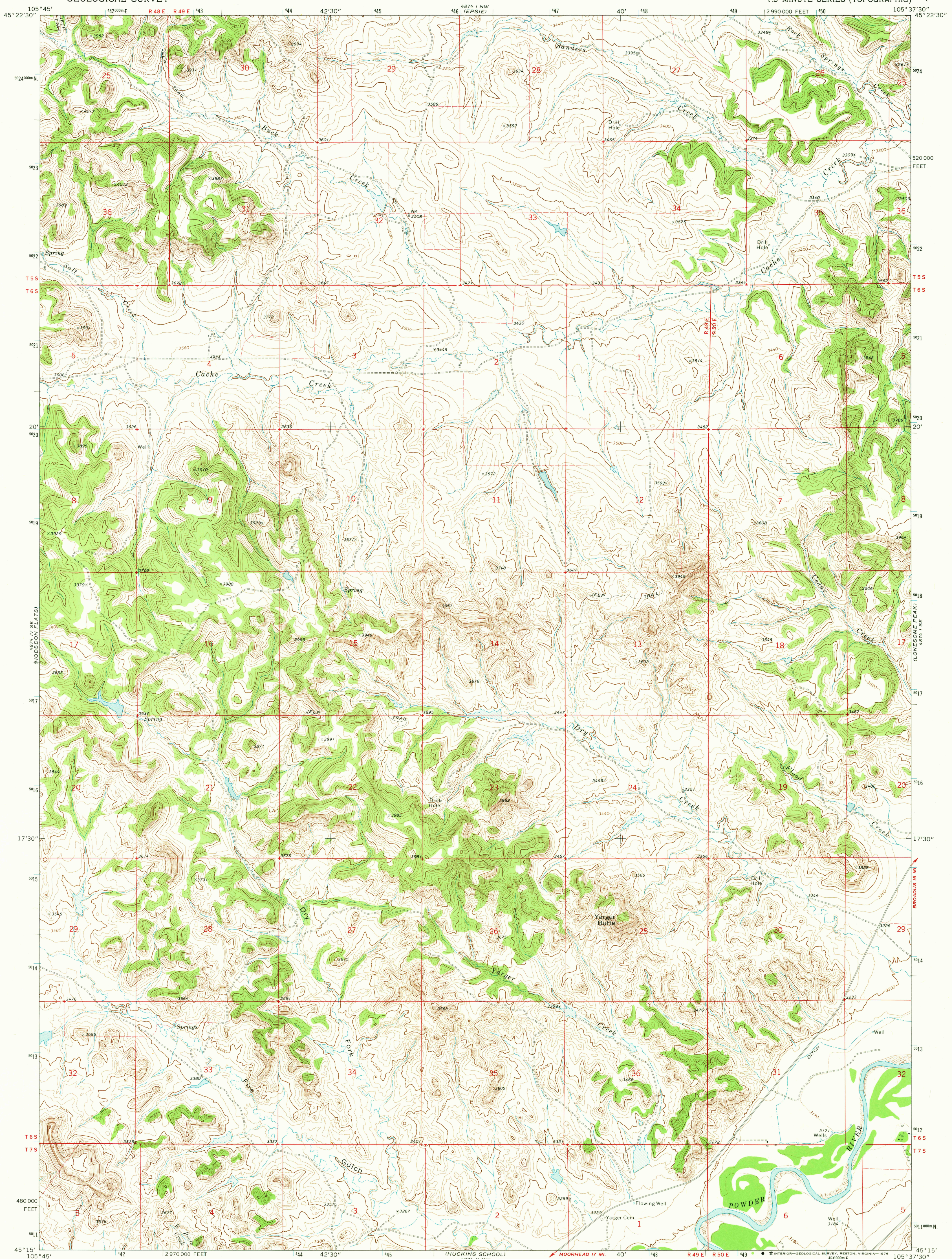


UNITED STATES  
DEPARTMENT OF THE INTERIOR  
GEOLOGICAL SURVEY

YARGER BUTTE QUADRANGLE  
MONTANA—POWDER RIVER CO.  
7.5 MINUTE SERIES (TOPOGRAPHIC)



Mapped, edited, and published by the Geological Survey

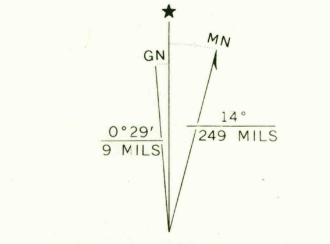
Control by USGS and NOS/NOAA

Topography by photogrammetric methods from aerial photographs taken 1972. Field checked 1973

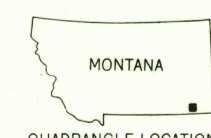
Projection and 10,000-foot grid ticks: Montana coordinate system, south zone (Lambert conformal conic)

1000-metre Universal Transverse Mercator grid ticks, zone 13, shown in blue. 1927 North American datum

Fine red dashed lines indicate selected fence lines



SCALE 1:24 000  
1 1000 0 1000 2000 3000 4000 5000 6000 7000 FEET  
1 1 KILOMETRE  
CONTOUR INTERVAL 20 FEET  
DOTTED LINES REPRESENT 10-FOOT CONTOURS  
NATIONAL GEODETIC VERTICAL DATUM OF 1929



ROAD CLASSIFICATION  
Primary highway, hard surface ———— Light-duty road, hard or improved surface ————  
Secondary highway, hard surface ———— Unimproved road ————  
Interstate Route ———— U.S. Route ———— State Route ————

YARGER BUTTE, MONT.  
N4515-W10537.5/7.5

USGS  
Historical File  
Topographic Division

AMS 4874 1 SW-SERIES V894

OCT 22 1976