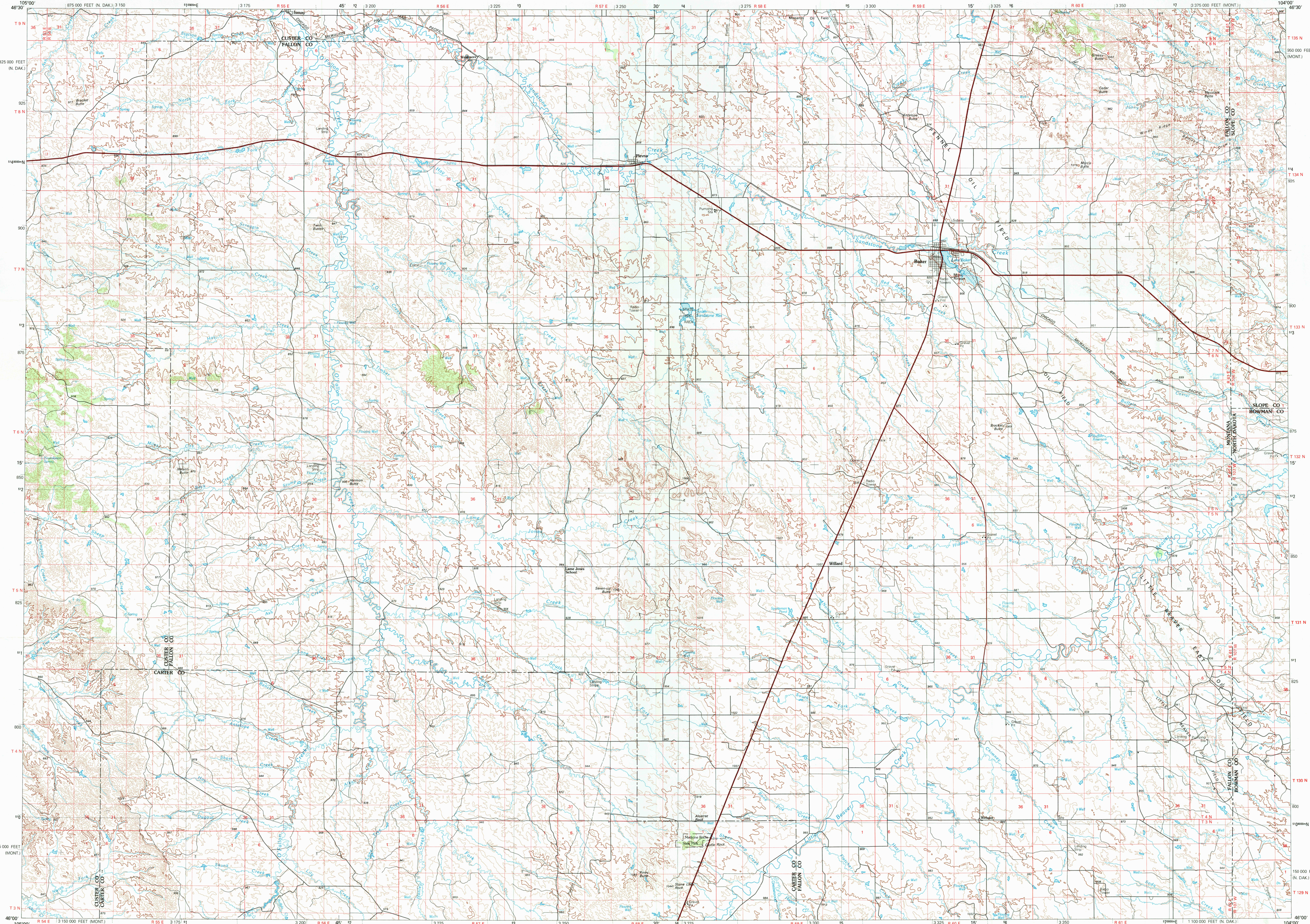


BAKER, MONTANA-NORTH DAKOTA

30X60 MINUTE SERIES (TOPOGRAPHIC)



1:100 000-scale metric
topographic map of

Baker

MONTANA-NORTH DAKOTA



30 X 60 MINUTE QUADRANGLE
SHOWING

- Contours and elevations in meters
- Highways, roads and other manmade structures
- Water features
- Woodland areas
- Geographic names



GEOLOGICAL SURVEY

1981

Produced by the United States Geological Survey

Compiled from USGS 1:24 000-scale topographic maps dated 1981. Map edited 1981.

Projection and 10 000-meter grid, zone 13 Universal Transverse Mercator

25 000-foot grid ticks based on Montana coordinate system, south zone and North Dakota coordinate system, south zone. 1927 North American datum

To place on the predicted North American Datum 1983 move the projection lines 4 meters north and 40 meters east

There may be private inholdings within the boundaries of the National or State reservations shown on this map

CONTOUR INTERVAL 20 METERS

NATIONAL GEODETIC VERTICAL DATUM OF 1929

THIS MAP COMPLIES WITH NATIONAL MAP ACCURACY STANDARDS

CONVERSION TABLE		DECLINATION DIAGRAM	ADJOINING MAPS			
Meters	Feet		1	2	3	
1	3.2808		1	2	3	
2	6.5917		4	5		
3	9.8425					
4	13.1234					
5	16.4042					
6	19.6850					
7	22.9659					
8	26.2467					
9	29.5276					
10	32.8084					
To convert meters to feet multiply by 3.2808		UTM grid convergence (GN) and 1981 magnetic declination (MN) at center of map Diagram is approximate	1	2	3	
To convert feet to meters multiply by 0.3048			4	5		
			6	7	8	
			1	2	3	
			4	5		
			6	7	8	
			1	2	3	
			4	5		
			6	7	8	
			1	2	3	
			4	5		
			6	7	8	
			1	2	3	
			4	5		
			6	7	8	
			1	2	3	
			4	5		
			6	7	8	
			1	2	3	
			4	5		
			6	7	8	
			1	2	3	
			4	5		
			6	7	8	
			1	2	3	
			4	5		
			6	7	8	
			1	2	3	
			4	5		
			6	7	8	
			1	2	3	
			4	5		
			6	7	8	
			1	2	3	
			4	5		
			6	7	8	
			1	2	3	
			4	5		
			6	7	8	
			1	2	3	
			4	5		
			6	7	8	
			1	2	3	
			4	5		
			6	7	8	
			1	2	3	
			4	5		
			6	7	8	
			1	2	3	
			4	5		
			6	7	8	
			1	2	3	
			4	5		
			6	7	8	
			1	2	3	
			4	5		
			6	7	8	
			1	2	3	
			4	5		
			6	7	8	
			1	2	3	
			4	5		
			6	7	8	
			1	2	3	
			4	5		
			6	7	8	
			1	2	3	
			4	5		
			6	7	8	
			1	2	3	
			4	5		
			6	7	8	
			1	2	3	
			4	5		
			6	7	8	
			1	2	3	
			4	5		
			6	7	8	
			1	2	3	
			4	5		
			6	7	8	
			1	2	3	
			4	5		
			6	7	8	
			1	2	3	
			4	5		
			6	7	8	
			1	2	3	
			4	5		
			6	7	8	
			1	2	3	
			4	5		
			6	7	8	
			1	2	3	
			4	5		
			6	7	8	
			1	2	3	
			4	5		
			6	7	8	
			1	2	3	
			4	5		
			6	7	8	
			1	2	3	
			4	5		
			6	7	8	
			1	2	3	
			4	5		
			6	7	8	
			1	2	3	
			4	5		
			6	7	8	
			1	2	3	
			4	5		
			6	7	8	
			1	2	3	
			4	5		
			6	7	8	
			1	2	3	
			4	5		
			6	7	8	
			1	2	3	
			4	5		
			6	7	8	
			1	2	3	
			4	5		
			6	7	8	
			1	2	3	
			4	5		
			6	7	8	
			1	2	3	
			4	5		
			6	7	8	
			1	2	3	
			4	5		
			6	7	8	
			1	2	3	
			4	5		
			6	7	8	
			1	2	3	
			4	5		
			6	7	8	
			1	2	3	
			4	5		
			6	7	8	
			1	2	3	
			4	5		
			6	7	8	
			1	2	3	
			4	5		
			6	7	8	
			1	2	3	
			4	5		
			6	7	8	
			1	2	3	
			4	5		
			6	7	8	
			1	2	3	
			4	5		
			6	7	8	
			1	2	3	
			4	5		
			6	7	8	
			1	2	3	
			4	5		
			6	7	8	
			1	2	3	
			4	5		
			6	7	8	
			1	2	3	
			4	5		
			6	7	8	
			1	2	3	
			4	5		
			6	7	8	
			1	2	3	
			4	5		
			6	7	8	
			1	2	3	
			4	5		
			6	7	8	
			1	2	3	
			4	5		
			6	7	8	
			1	2	3	
			4	5		
			6	7	8	
			1	2	3	
			4	5		
			6	7	8	
			1	2	3	
			4	5		
			6	7	8	
			1	2	3	
			4	5		
			6	7	8	
			1	2	3	
			4	5		
			6	7	8	
			1	2	3	
			4	5		
			6	7	8	
			1	2	3	
			4	5		
			6	7	8	
			1	2	3	
			4	5		
			6	7	8	
			1	2	3	
			4	5		
			6	7	8	
			1	2	3	
			4	5		
			6	7	8	
			1	2	3	
			4	5		
			6	7	8	
			1	2	3	
			4	5		
			6	7	8	
			1	2	3	
			4	5		
			6	7	8	
			1	2	3	
			4	5		
			6	7	8	
			1	2	3	
			4	5		
			6	7	8	
			1	2	3	
			4	5		
			6	7	8	
			1	2	3	
			4	5		
			6	7	8	
			1	2	3	
			4	5		
			6	7	8	
			1	2	3	
			4	5		
			6	7	8	
			1	2	3	
			4	5		
			6	7	8	
			1	2	3	
			4	5		
			6	7	8	
			1	2	3	
			4	5		
			6	7	8	
			1	2	3	
			4	5		
			6	7	8	
			1	2	3	
			4	5		
			6	7	8	
			1	2	3	
			4	5		