

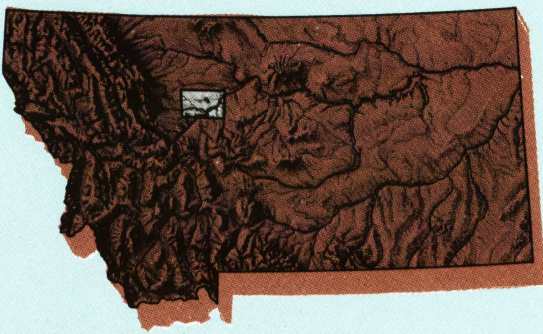
GREAT FALLS NORTH, MONTANA

30X60 MINUTE SERIES (TOPOGRAPHIC)

47111-El-TM-100

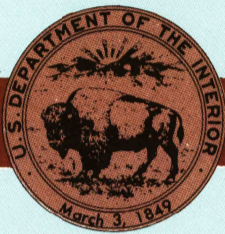
Great Falls North  
MONTANA

1:100 000-scale metric  
topographic map



30 X 60 MINUTE QUADRANGLE  
SHOWING

- Contours and elevations in meters
- Highways, roads and other manmade structures
- Water features
- Woodland areas
- Geographic names



GEOLOGICAL SURVEY

1976  
PHOTOINSPECTED 1990

Produced by the United States Geological Survey

Compiled from USGS 1:24 000 and 1:62 500-scale topographic maps dated 1949-1965. Planimetry revised from aerial photographs taken 1972-75 and other source data. Revised information not field checked. Map edited 1976

1927 North American Datum (NAD 27). Projection and 10 000-meter grid: Universal Transverse Mercator, zone 12 25 000-foot ticks: Montana coordinate system, north and central zones

The difference between NAD 27 and North American Datum of 1983 (NAD 83) is too small to show at this scale. The values of the shift between the datums for 7.5-minute intersections are given in USGS Bulletin 1875

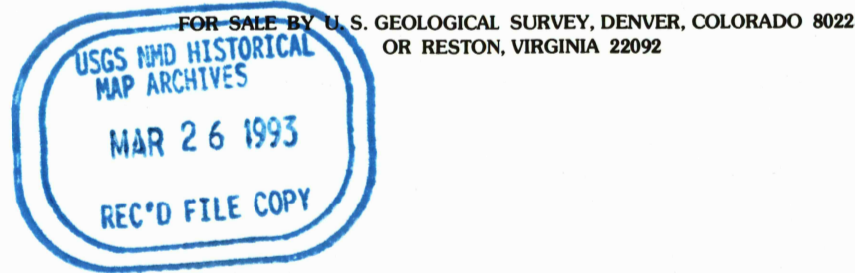
There may be private inholdings within the boundaries of the National or State reservations shown on this map

Map photoinspected using 1990 photographs  
No major culture or drainage changes found

CONTOUR INTERVAL 20 METERS  
NATIONAL GEODETIC VERTICAL DATUM OF 1929  
ELEVATIONS SHOWN TO THE NEAREST METER

THIS MAP COMPLIES WITH NATIONAL MAP ACCURACY STANDARDS

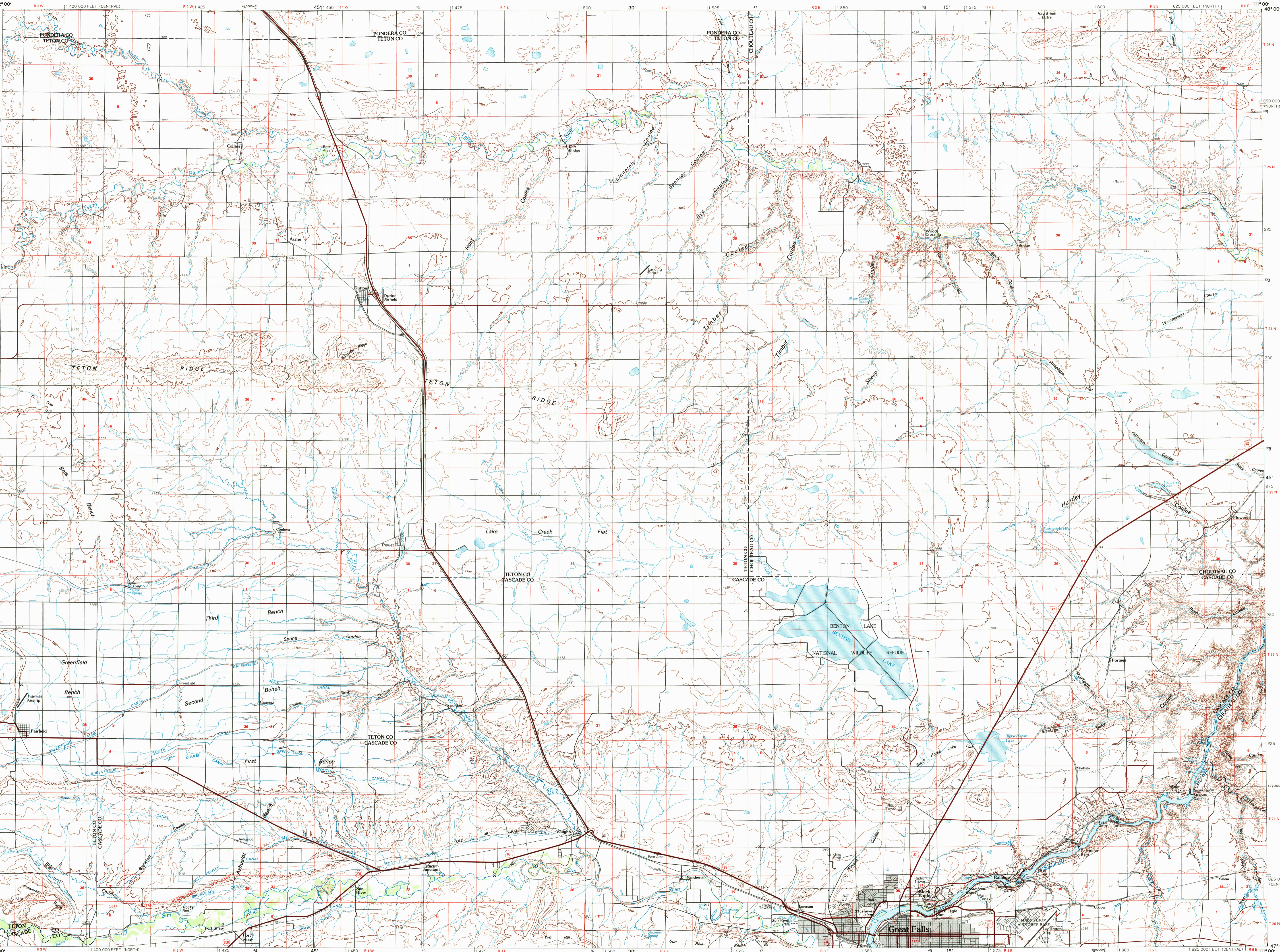
CONVERSION TABLE		DECLINATION DIAGRAM	ADJOINING MAPS		
Meters	Feet		1	2	3
1	3.2808		4	5	
2	6.5617				
3	9.8425				
4	13.1234				
5	16.4042				
6	19.6850				
7	22.9659				
8	26.2467				
9	29.5275				
10	32.8084				
To convert meters to feet multiply by 3.2808 To convert feet to meters multiply by 0.3048			1	2	3
			4	5	
			6	7	8
			1	2	3
			4	5	
			6	7	8
			1	2	3
			4	5	
			6	7	8



Topographic Map Symbols

Primary highway, hard surface	
Secondary highway, hard surface	
Light duty road, principal street, hard or improved surface	
Other road or street; trail	
Route marker: Interstate, U. S. State	
Railroad: standard gage, narrow gage	
Bridge: overpass; underpass	
Tunnel: road; railroad	
Built up area; locality; elevation	
Airport; landing field; landing strip	
National boundary	
State boundary	
County boundary	
National or State reservation boundary	
Land grant boundary	
U. S. public lands survey: range, township; section	
Range, township; section line: protracted	
Power transmission line; pipeline	
Dam; dam with lock	
Cemetery; building	
Windmill; water well; spring	
Mine shaft; edit or cave; mine, quarry; gravel pit	
Campground; picnic area; U. S. location monument	
Ruins; cliff dwelling	
Distorted surface: strip mine, lava, sand	
Contours: index; intermediate; supplementary	
Barometric contours: index; intermediate	
Stream, lake; perennial; intermittent	
Rapids, large and small; falls, large and small	
Area to be submerged; marsh, swamp	
Land subject to controlled inundation; woodland	
Scrub; mangrove	
Orchard; vineyard	

A sample describing topographic maps is available on request



• INTERIOR—GEOLOGICAL SURVEY, RESTON, VIRGINIA—1993

KILOMETERS 0 1 2 3 4 5 6 7 8 9 10 11 12 13 14 15 16 17 18 19 20  
MILES 1 2 3 4 5 6 7 8 9 10 11 12 13

SCALE 1:100 000  
1 CENTIMETER ON THE MAP REPRESENTS 1 KILOMETER ON THE GROUND  
CONTOUR INTERVAL 20 METERS

5000 0 10000 20000 30000 40000 50000 60000 70000 FEET

GREAT FALLS NORTH, MONTANA  
47111-El-TM-100

1976  
PHOTOINSPECTED 1990