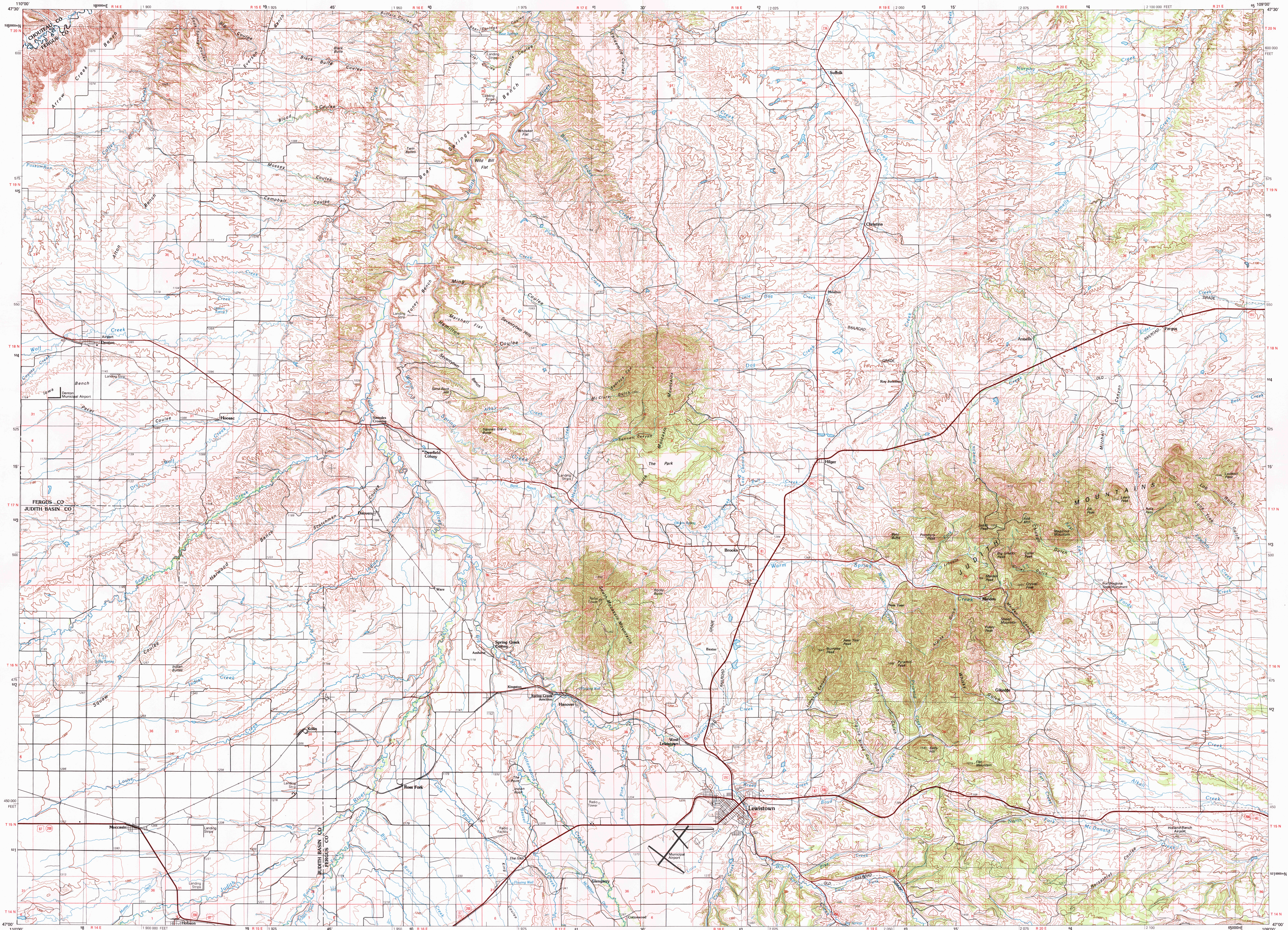


LEWISTOWN, MONTANA

30X60 MINUTE SERIES (TOPOGRAPHIC)



• INTERIOR—GEOLOGICAL SURVEY, RESTON, VIRGINIA—1994

KILOMETERS 1 0 1 2 3 4 5 6 7 8 9 10 11 12 13 14 15 16 17 18 19 20  
MILES 0 1 2 3 4 5 6 7 8 9 10 11 12 13 14 15 16 17 18 19 20  
SCALE 1:100 000  
1 CENTIMETER ON THE MAP REPRESENTS 1 KILOMETER ON THE GROUND  
CONTOUR INTERVAL 20 METERS

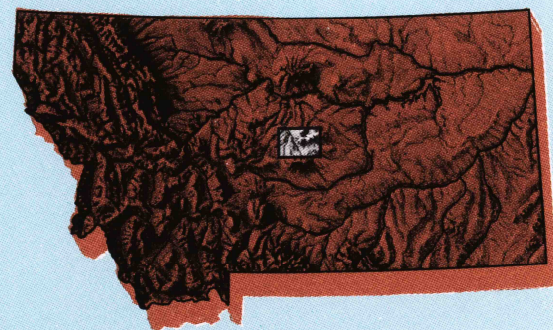
LEWISTOWN, MONTANA  
47109-A1-TM-100

1978

PHOTOINSPECTED 1991

Lewistown  
MONTANA

1:100 000-scale metric  
topographic map



30 X 60 MINUTE QUADRANGLE  
SHOWING

- Contours and elevations in meters
- Highways, roads and other manmade structures
- Water features
- Woodland areas
- Geographic names



GEOLOGICAL SURVEY

1978 /94  
PHOTOINSPECTED 1991

Produced by the United States Geological Survey  
Compiled from USGS 1:24 000- and 1:62 500-scale topographic maps dated 1941-1975. Planimetry revised from aerial photographs taken 1975 and other source data. Revised information not field checked. Map edited 1978  
North American Datum of 1927 (NAD 27). Projection and 10 000-meter grid: Universal Transverse Mercator, zone 12 25 000-foot ticks: Montana coordinate system, central zone  
The values of the shift between NAD 27 and North American Datum of 1983 (NAD 83) for 7.5-minute intersections are obtainable from National Geodetic Survey NADCON software  
There may be private inholdings within the boundaries of the National or State reservations shown on this map  
Protracted land lines are dashed  
Map photoinspected using 1991 photographs  
No major culture or drainage changes found

CONTOUR INTERVAL 20 METERS  
NATIONAL GEODETIC VERTICAL DATUM OF 1929  
ELEVATIONS SHOWN TO THE NEAREST METER

THIS MAP COMPLIES WITH NATIONAL MAP ACCURACY STANDARDS

CONVERSION TABLE		DECLINATION DIAGRAM	ADJOINING MAPS			
Meters	Feet		1	2	3	
1	3.2808	<p>UTM grid convergence (GN) and 1978 magnetic declination (MD) at center of map Diagram is approximate</p>	1	2	3	
2	6.5617		4	5	6	
3	9.8425					
4	13.1234					
5	16.4042					
6	19.6850					
7	22.9659					
8	26.2467					
9	29.5276					
10	32.8084					
To convert meters to feet multiply by 3.2808		UTM grid convergence (GN) and 1978 magnetic declination (MD) at center of map Diagram is approximate				
To convert feet to meters multiply by 0.3048						
			1 Fort Benton	2 Winifred	3 Fortman	
			4 Salt	5 Alton	6 White Sulphur Spgs.	
			7 Big Snow Mountains	8 Musselshell		

FOR SALE BY U.S. GEOLOGICAL SURVEY, DENVER, COLORADO 80225  
OR RESTON, VIRGINIA 22092

RETURN TO:  
USGS AND HISTORICAL MAP ARCHIVES

Topographic Map Symbols

Primary highway, hard surface	
Secondary highway, hard surface	
Light duty road, principal street, hard or improved surface	
Other road or street; trail	
Route marker: Interstate; U. S.; State	
Railroad: standard gage; narrow gage	
Bridge: overpass; underpass	
Tunnel: road; railroad	
Built up area; locality; elevation	
Airport: landing field; landing strip	
National boundary	
State boundary	
County boundary	
National or State reservation boundary	
Land grant boundary	
U. S. public lands survey: range, township; section	
Range, township; section line; protracted	
Power transmission line; pipeline	
Dam; dam with lock	
Cemetery; building	
Windmill; water well; spring	
Mine shaft; adit or cave; mine, quarry; gravel pit	
Census route; joint area; U. S. location monument	
Ruin; cliff dwelling	
Distorted surface: strip mine, lava; sand	
Contour: index; intermediate; supplementary	
Bathymetric contours: index; intermediate	
Stream, lake: perennial; intermittent	
Rapids, large and small; falls, large and small	
Area: ice submerged; marsh, water	
Land subject to controlled inundation; woodland	
Scrub; mangrove	
Orchard; vineyard	

A pamphlet describing topographic maps is available on request