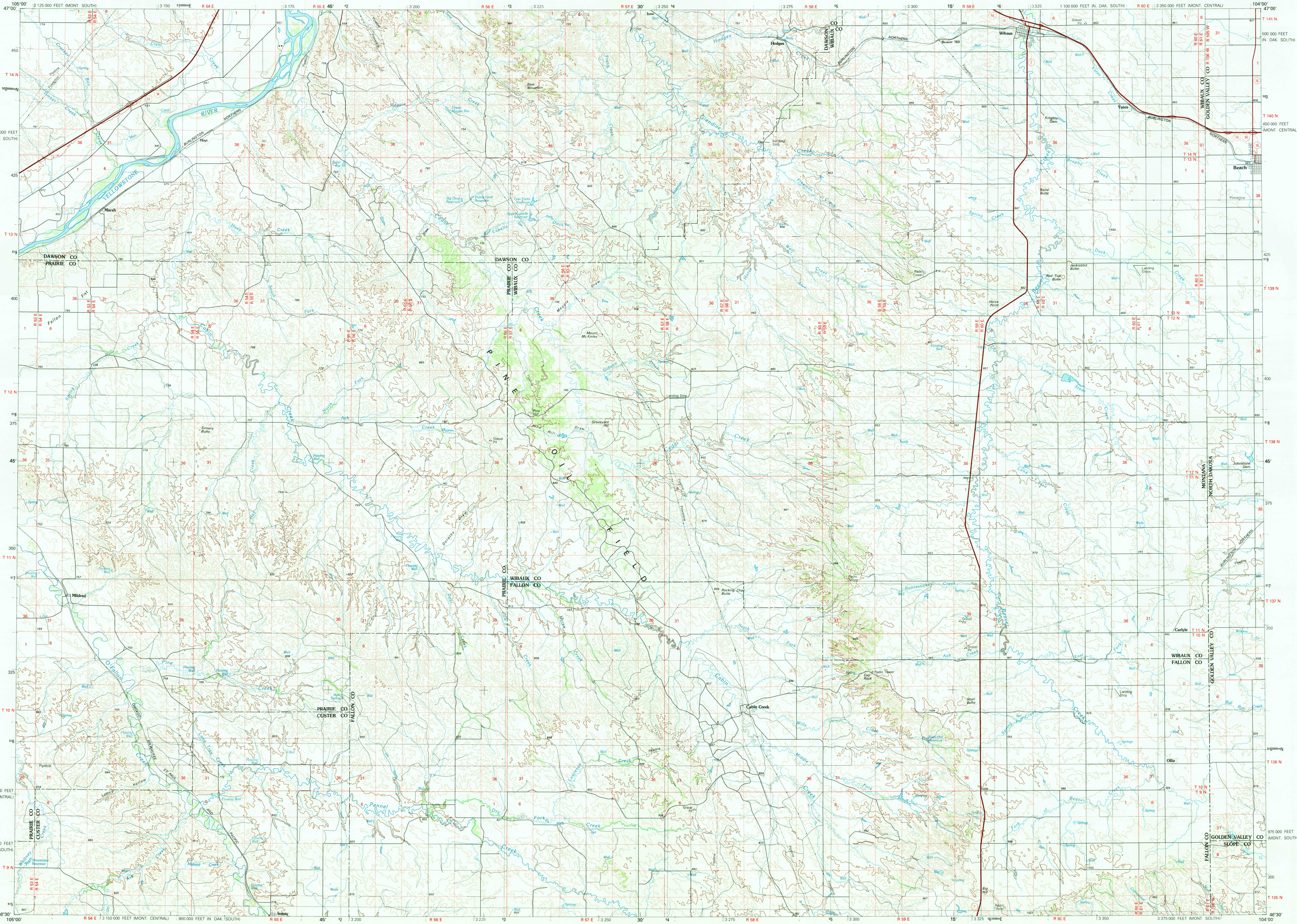


WIBAU, MONTANA-NORTH DAKOTA

30X60 MINUTE SERIES (TOPOGRAPHIC)

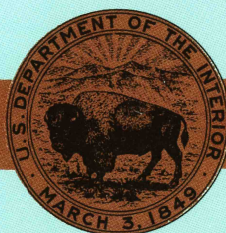


1:100 000-scale metric  
topographic map of  
**Wibaux**  
MONTANA-NORTH DAKOTA



30 X 60 MINUTE QUADRANGLE  
SHOWING

- Contours and elevations in meters
- Highways, roads and other manmade structures
- Water features
- Woodland areas
- Geographic names



GEOLOGICAL SURVEY

1981

Produced by the United States Geological Survey

Compiled from USGS 1:24 000-scale topographic maps dated 1966-1981 and from advance materials. Partially revised from aerial photographs taken 1974-1978 and other source data. Revised information not field checked. Map edited 1981.

Projection and 10 000-meter grid, zone 13 Universal Transverse Mercator. 25 000-foot grid ticks based on Montana coordinate system central and south zones, and North Dakota coordinate system south zone. 1927 North American datum. To place on the predicted North American Datum 1983 move the projection lines 4 meters north and 41 meters east.

CONTOUR INTERVAL 20 METERS  
NATIONAL GEODETIC VERTICAL DATUM OF 1929

THIS MAP COMPLIES WITH NATIONAL MAP ACCURACY STANDARDS

CONVERSION TABLE

Meters	Feet
1	3.2808
2	6.5617
3	9.8425
4	13.1232
5	16.4040
6	19.6850
7	22.9659
8	26.2467
9	29.5275
10	32.8084

To convert meters to feet multiply by 3.2808

To convert feet to meters multiply by 0.3048

DECLINATION DIAGRAM

UTM grid convergence (GN) and 1981 magnetic declination (MN) at center of map.

Diagram is approximate

ADJOINING MAPS

1	2	3
4	5	
6	7	8

1 Circle

2 Gladwin

3 Grassly Butte

4 Terry

5 Bellevue

6 Miles City

7 Baker

8 Bowman

FOR SALE BY U. S. GEOLOGICAL SURVEY, DENVER, COLORADO 80225 OR RESTON, VIRGINIA 22092

Topographic Map Symbols

Primary highway, hard surface	
Secondary highway, hard surface	
Light duty road, principal street, hard or improved surface	
Other road or street; trail	
Route marker: interstate; U. S. State	
Railroad: standard gage; narrow gage	
Bridge: overpass; underpass	
Tunnel: road; railroad	
Built up area; locality; elevation	
Airport; landing field; landing strip	
National boundary	
State boundary	
County boundary	
National or State reservation boundary	
Land grant boundary	
U. S. public lands survey: range, township; section	
Range, township; section line: protracted	
Power transmission line; pipeline	
Dam; dam with lock	
Cemetery; building	
Windmill; water well; spring	
Mine shaft; adit or cave; mine, quarry; gravel pit	
Campground; picnic area; U. S. location monument	
Ruins; cliff dwelling	
Contours: index; intermediate; supplementary	
Bathymetric contours: index; intermediate	
Stream, lake, pond; intermittent	
Rapids; large and small; falls, large and small	
Area to be submerged; marsh, swamp	
Land subject to controlled inundation; woodland	
Scrub; mangrove	
Orchard; vineyard	

A pamphlet describing topographic maps is available on request

WIBAU, MONTANA-NORTH DAKOTA  
N4630-W10400/30x60

1981