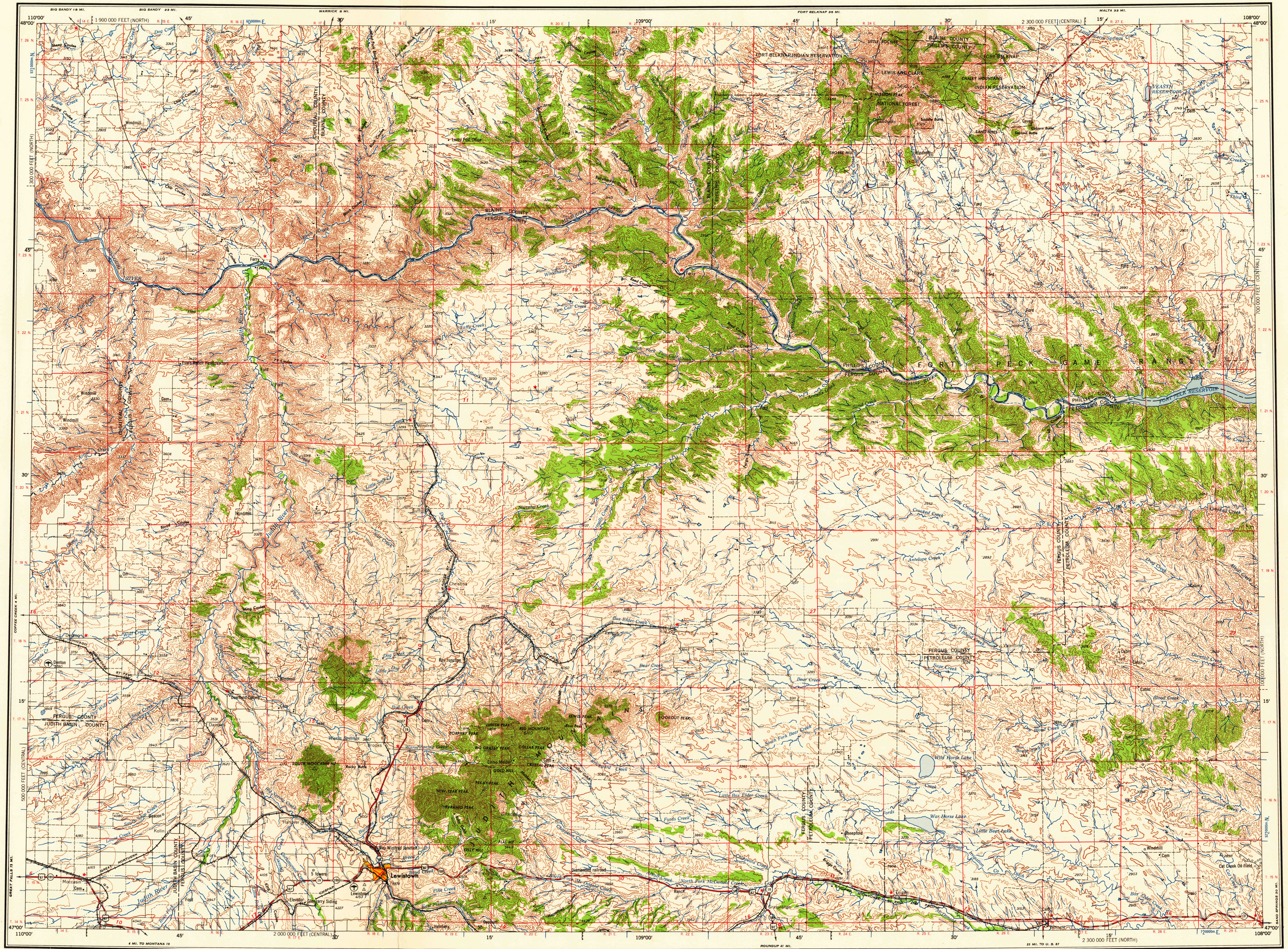


U.S.G.S.
FILE COPY
TOPOGRAPHIC DIVISION



Prepared by the Army Map Service (AJPM), Corps of Engineers, U.S. Army, Washington, D.C. Compiled in 1955 by photogrammetric methods. Horizontal and vertical control by USGS, USC&GS and CE. Aerial photography 1953. Photography field annotated 1954.

100,000-foot grid based on Montana coordinate system, central and north zones

10,000-meter Universal Transverse Mercator grid ticks, zone 12, shown in blue

LEGEND

ROAD DATA 1954
Figures in red denote approximate distances in miles between stars

POPULATED PLACES

Over 500,000
100,000 to 500,000
25,000 to 100,000
5,000 to 25,000
1,000 to 5,000
Less than 1,000

RAILROADS

Standard gauge
Narrow gauge
Inter-national
State
County
Park or reservation

BOUNDARIES

International
State
County
Park or reservation

LAND

Hard surface, heavy duty
Hard surface, medium duty
More than two lanes wide
Two lanes wide, Federal route marker
Two lanes wide, State route marker
Improved light duty
Unimproved dirt
Trail

Water

Landplane airport
Landing area
Seaplane airport
Dry lake
Woods-brushwood

Landmarks

School, Church, Other
Horizontal control point
Spot elevation in feet
Marsh or swamp
Intermittent or dry stream
Power line

Scale 1:250,000

0 5 10 15 20 25 30 Statute Miles

0 5 10 15 20 25 30 Kilometers

CONTOUR INTERVAL 100 FEET

TRANSVERSE MERCATOR PROJECTION

1955 MAGNETIC DECLINATION FOR THIS SHEET VARIES FROM 10°15' EASTERLY FOR THE CENTER OF THE WEST EDGE TO 17°15' EASTERLY FOR THE CENTER OF THE EAST EDGE. MEAN ANNUAL CHANGE 5.0 CW. WESTERLY.

FOR SALE BY U.S. GEOLOGICAL SURVEY, DENVER 25, COLORADO OR WASHINGTON 25, D.C.

LOCATION DIAGRAM FOR NL 12-3

82-10	82-11	82-12	82-13	82-14
82-15	82-16	82-17	82-18	82-19
82-20	82-21	82-22	82-23	82-24
82-25	82-26	82-27	82-28	82-29
82-30	82-31	82-32	82-33	82-34
82-35	82-36	82-37	82-38	82-39
82-40	82-41	82-42	82-43	82-44
82-45	82-46	82-47	82-48	82-49
82-50	82-51	82-52	82-53	82-54
82-55	82-56	82-57	82-58	82-59
82-60	82-61	82-62	82-63	82-64
82-65	82-66	82-67	82-68	82-69
82-70	82-71	82-72	82-73	82-74
82-75	82-76	82-77	82-78	82-79
82-80	82-81	82-82	82-83	82-84
82-85	82-86	82-87	82-88	82-89
82-90	82-91	82-92	82-93	82-94
82-95	82-96	82-97	82-98	82-99

SECTIONIZED TOWNSHIP

6	5	4	3	2	1
7	8	9	10	11	12
13	14	15	16	17	18
19	20	21	22	23	24
25	26	27	28	29	30
31	32	33	34	35	36

TOWNSHIP OR RANGE LINE

LAND GRANT BOUNDARY

LEWISTOWN, MONTANA

U.S.G.S.
FILE COPY
TOPOGRAPHIC DIVISION