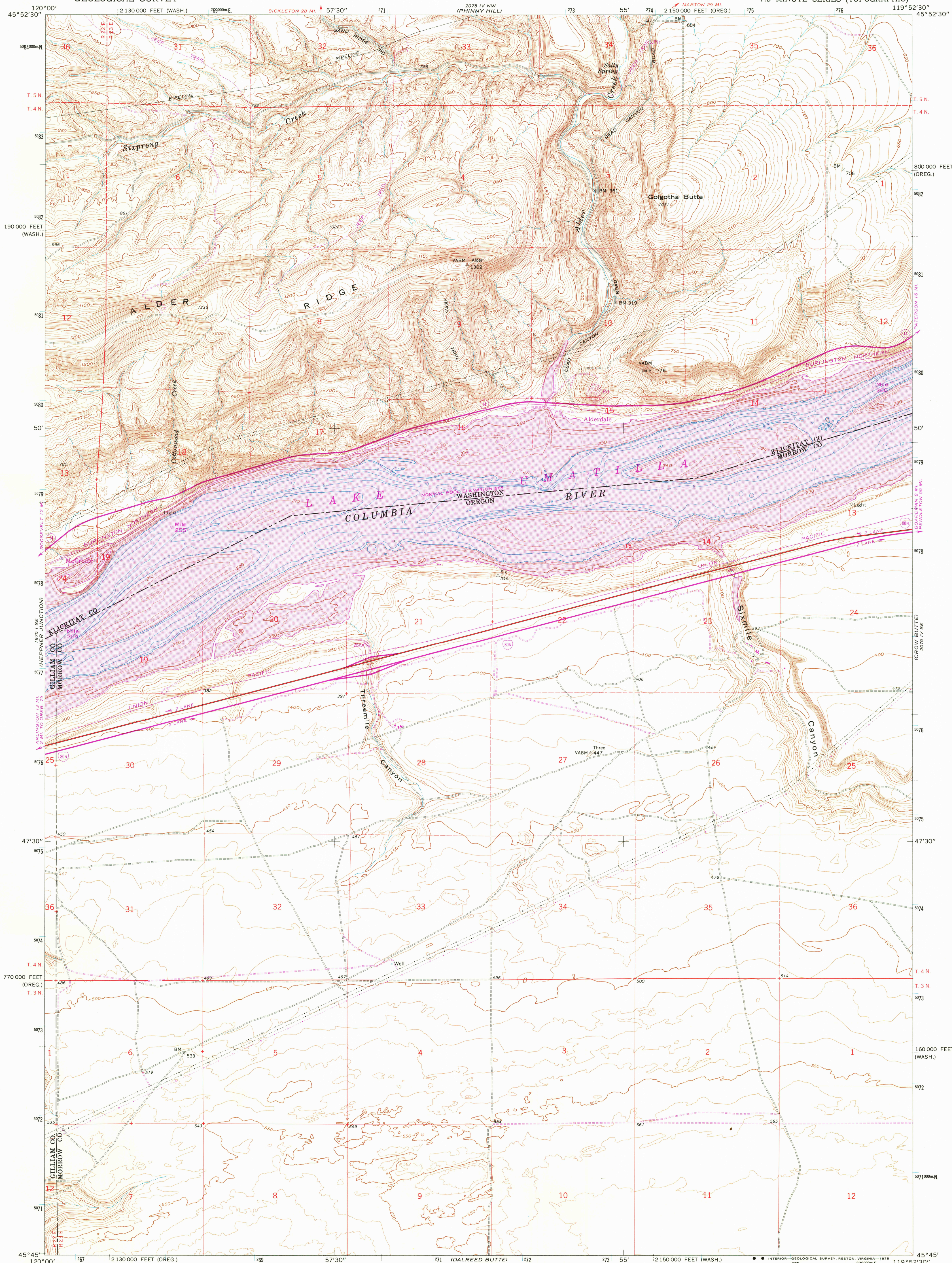


UNITED STATES
DEPARTMENT OF THE INTERIOR
GEOLOGICAL SURVEY

ALDERDALE QUADRANGLE
WASHINGTON-OREGON
7.5 MINUTE SERIES (TOPOGRAPHIC)



Mapped, edited, and published by the Geological Survey
Control by USGS, USC&GS, and USCE
Topography by photogrammetric methods from aerial
photographs taken 1958 and 1960. Field checked 1962
Selected hydrographic data compiled from USC&GS
Charts 6160 and 6161 (1962). This information is not
intended for navigational purposes
Polyconic projection. 1927 North American datum
10,000-foot grids based on Oregon coordinate system, north zone
and Washington coordinate system, south zone
1000-meter Universal Transverse Mercator grid ticks,
zone 11, shown in blue
Revisions shown in purple compiled from aerial photographs
taken 1970. This information not field checked
Map photoinspected 1975
No major culture or drainage changes observed

SCALE 1:24 000
1 1000 0 1000 2000 3000 4000 5000 6000 7000 FEET
1 5 10 15 20 25 30 35 40 45 50 55 60 65 70 75 80 85 90 95 100 METERS
CONTOUR INTERVAL 10 FEET
NATIONAL GEODETIC VERTICAL DATUM OF 1929
DEPTH CURVES AND SOUNDINGS IN FEET-DATUM IS LOW WATER
GRADIENT ESTABLISHED BY CORPS OF ENGINEERS
THIS MAP COMPLIES WITH NATIONAL MAP ACCURACY STANDARDS
FOR SALE BY U.S. GEOLOGICAL SURVEY, DENVER, COLORADO 80225, OR RESTON, VIRGINIA 22092
A FOLDER DESCRIBING TOPOGRAPHIC MAPS AND SYMBOLS IS AVAILABLE ON REQUEST

ROAD CLASSIFICATION
Heavy-duty Light-duty
Unimproved dirt
Interstate Route State Route
USGS
Historical File
Topographic Division
ALDERDALE, WASH.-OREG.
N4545-11952.5/7.5
PHOTOINSPECTED 1975
1962
PHOTOREVISED 1970
AMS 2075 IV SW-SERIES V892

MAR 14 1979
3220