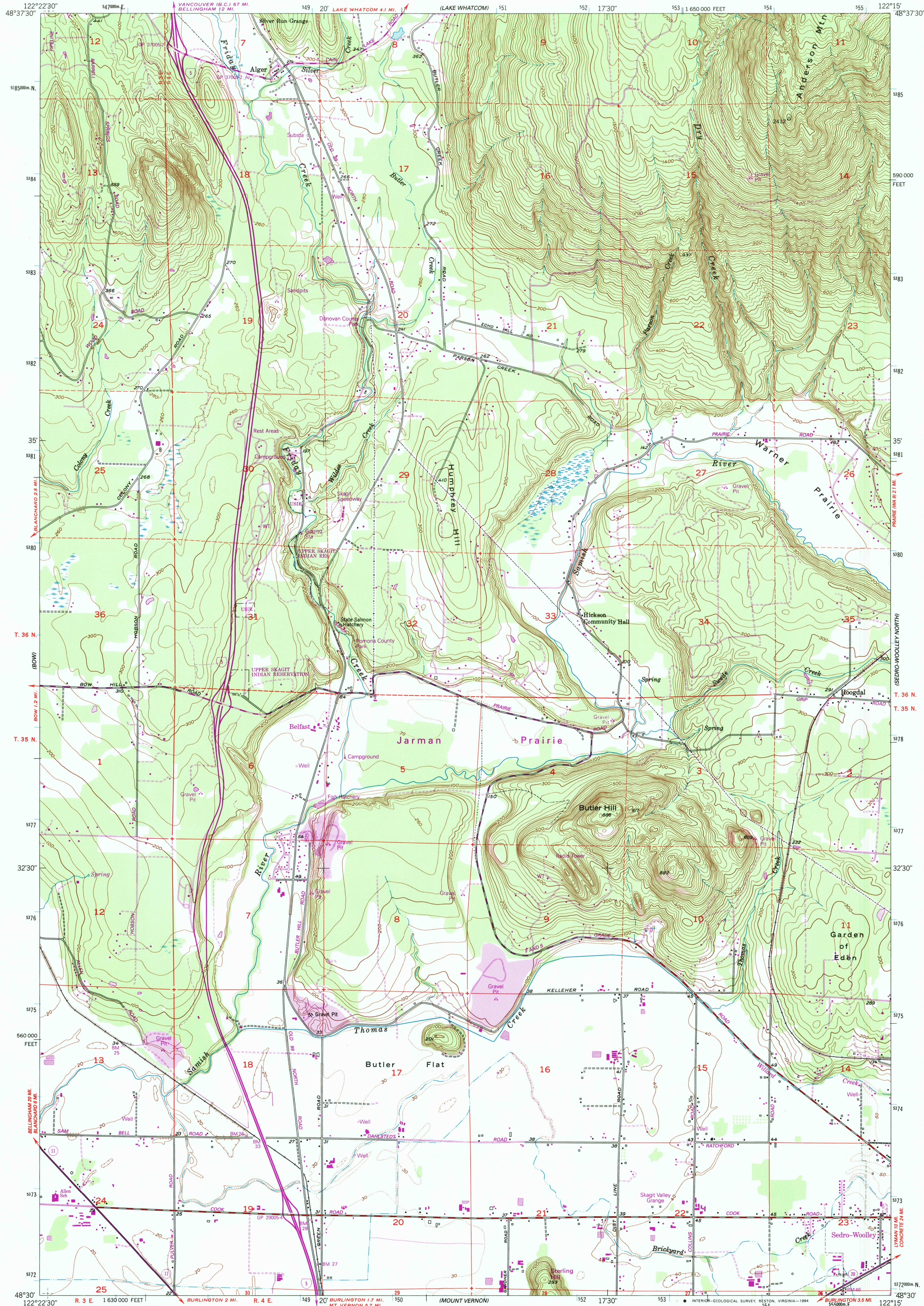


UNITED STATES
DEPARTMENT OF THE INTERIOR
GEOLOGICAL SURVEY

ALGER QUADRANGLE
WASHINGTON-SKAGIT CO.
7.5 MINUTE SERIES (TOPOGRAPHIC)



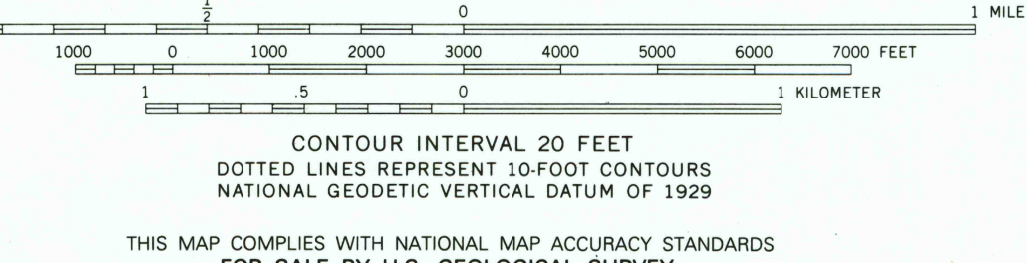
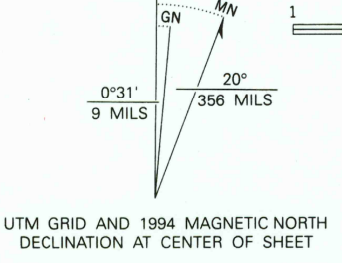
Produced by the United States Geological Survey
Control by USGS and NOS/NOAA

Compiled from aerial photographs taken 1951. Revisions shown
in purple compiled from aerial photographs taken 1989 and
other sources and have been field checked. Map edited 1994.
Conflicts may exist between some updated features and previously
mapped contours.

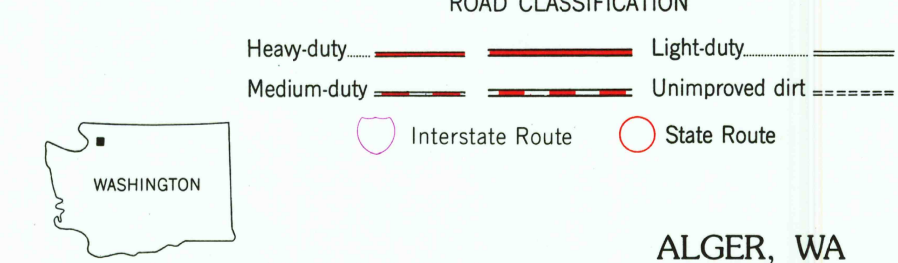
North American Datum of 1927 (NAD 27). Projection and
10000-foot ticks: Washington Coordinate System, north zone
(Lambert Conformal Conic).
Blue 1000-meter Universal Transverse Mercator ticks, zone 10.

North American Datum of 1983 (NAD 83) is shown by dashed
corner ticks. The values of the shift between NAD 27 and NAD 83
for 7.5-minute intersections are obtainable from National Geodetic
Survey NADCON software.

There may be private inholdings within the boundaries of the
National or State reservations shown on this map.



THIS MAP COMPLIES WITH NATIONAL MAP ACCURACY STANDARDS
FOR SALE BY U.S. GEOLOGICAL SURVEY
DENVER, COLORADO 80225, OR RESTON, VIRGINIA 22092
A FOLDER DESCRIBING TOPOGRAPHIC MAPS AND SYMBOLS IS AVAILABLE ON REQUEST



ALGER, WA
48122-E3-TF-024
1952
REVISED 1994
DMA 1581 III SE-SERIES V891

