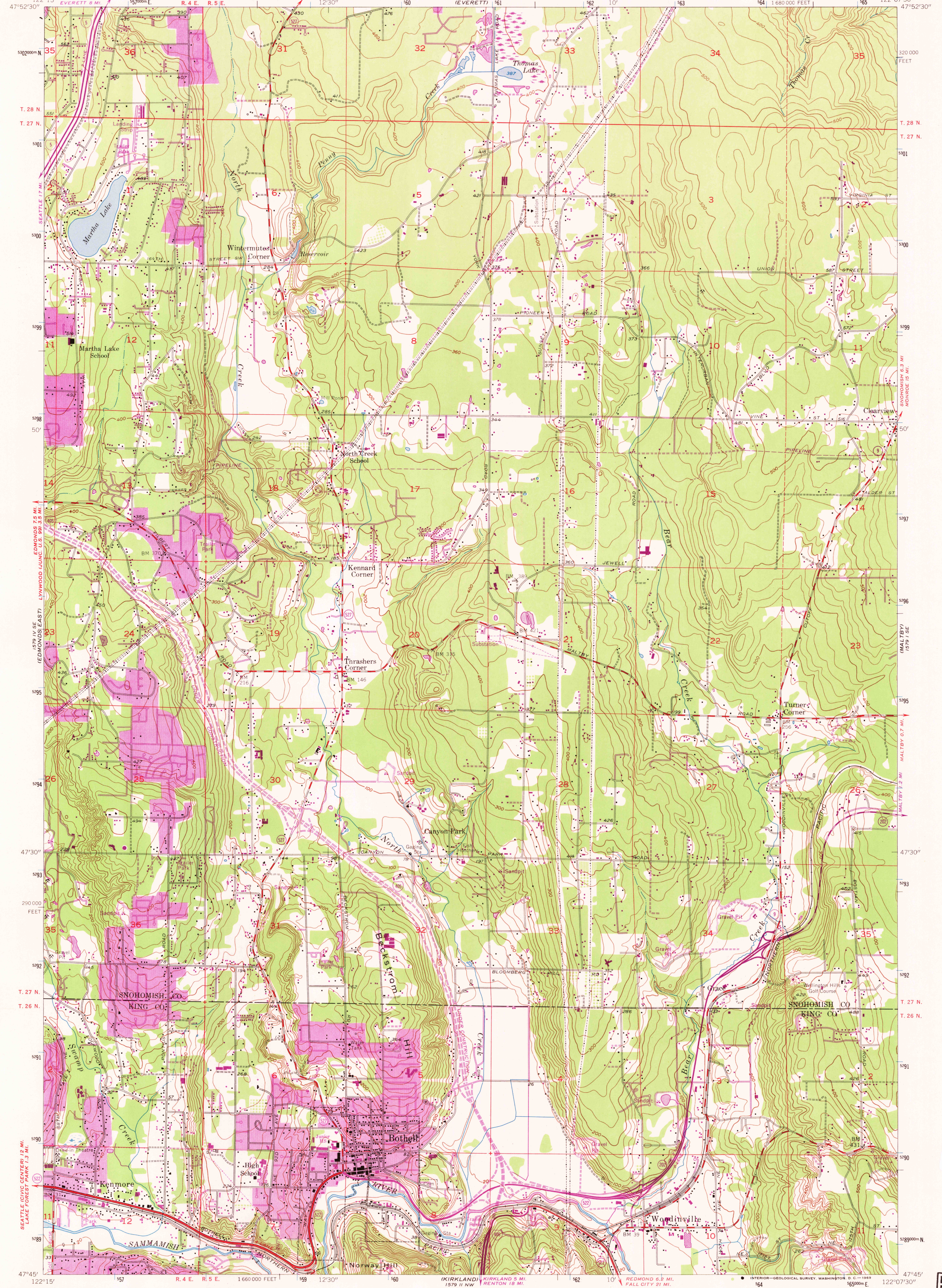


159 1 NE
159 1 NE
(SNOHOMISH)

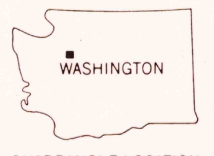
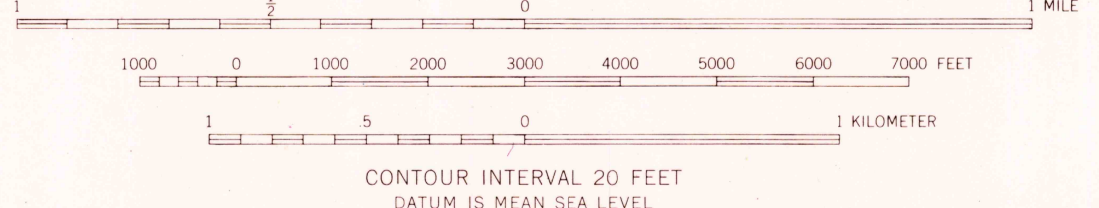
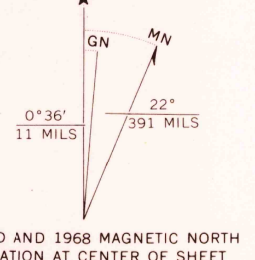
UNITED STATES
DEPARTMENT OF THE INTERIOR
GEOLOGICAL SURVEY

BOTHELL QUADRANGLE
WASHINGTON
7.5 MINUTE SERIES (TOPOGRAPHIC)
SW 1/4 EVERETT 15' QUADRANGLE

159 1 NE
159 1 NE
(SNOHOMISH)



Mapped, edited, and published by the Geological Survey
Control by USGS and USC&GS
Topography from aerial photographs by multiplex methods
Aerial photographs taken 1952. Field check 1953
Polyconic projection. 1927 North American datum
10,000-foot grid based on Washington coordinate system, north zone
Dashed land lines indicate approximate location
1000-meter Universal Transverse Mercator grid ticks,
zone 10, shown in blue
Revisions shown in purple compiled from aerial photographs
taken 1968. This information not field checked
Purple tint indicates extension of urban areas



ROAD CLASSIFICATION
Heavy-duty ——— Light-duty ———
Medium-duty ——— Unimproved dirt ———
Interstate Route ——— State Route ———

BOTHELL, WASH.
SW 1/4 EVERETT 15' QUADRANGLE
N 4745-W 12207.5/7.5

1953
PHOTOREVISED 1968
AMS 1579 I SW-SERIES V891

USGS Library
Reston, VA.
Topo Archive

U.S.G.S.
FILE COPY
TOPOGRAPHIC DIVISION

3415
SEP 24 1969