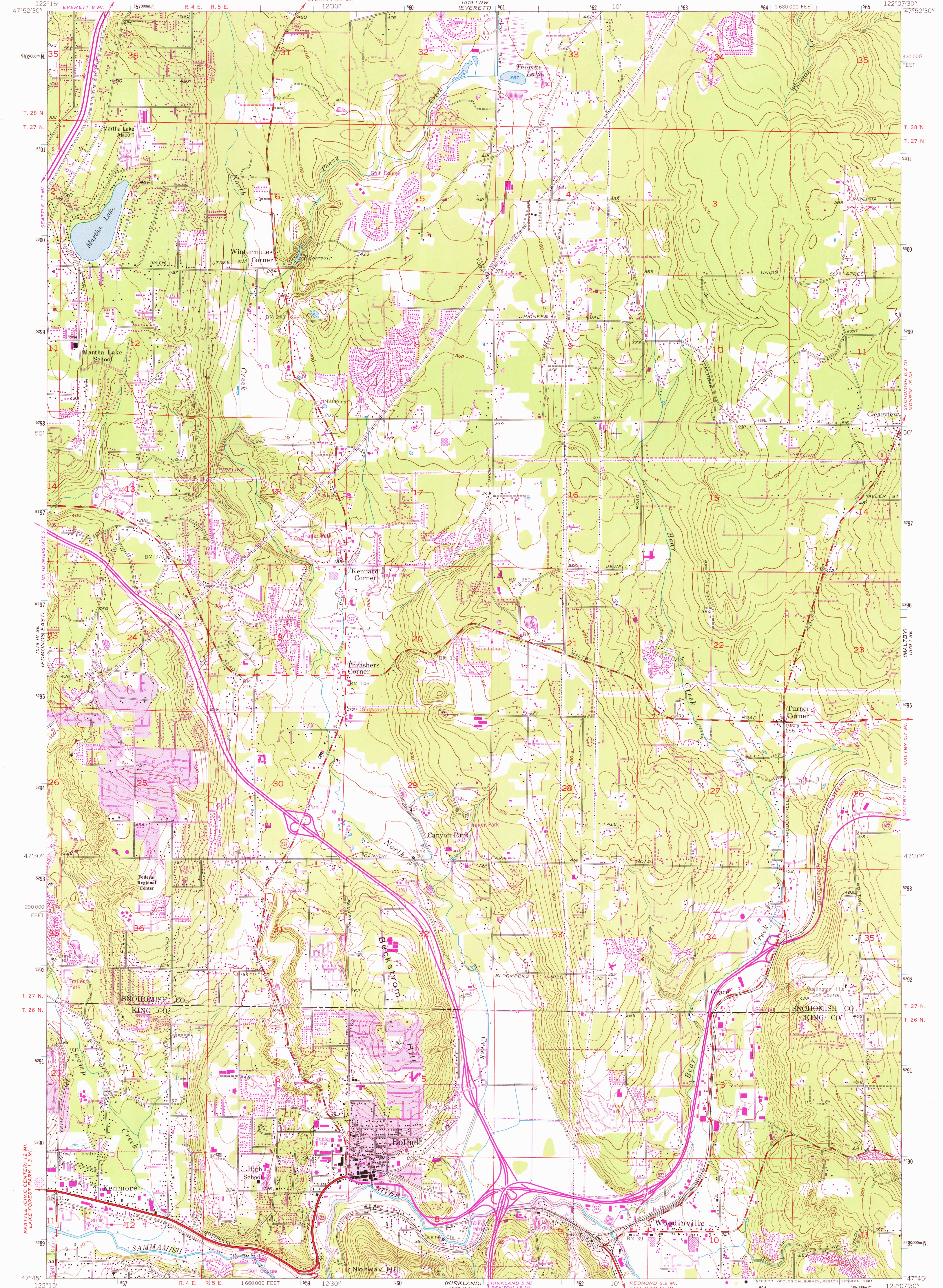


1579 I NW
(MOUNTAIN)

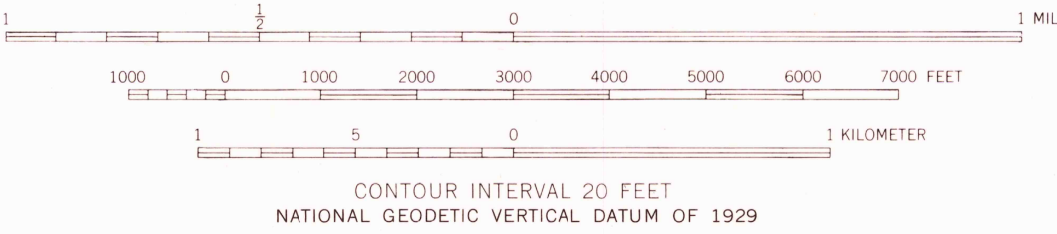
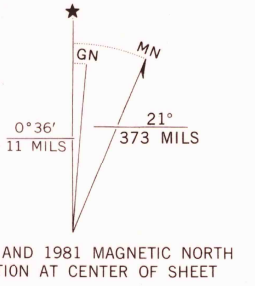
UNITED STATES
DEPARTMENT OF THE INTERIOR
GEOLOGICAL SURVEY

BOTHELL QUADRANGLE
WASHINGTON
7.5 MINUTE SERIES (TOPOGRAPHIC)
SW/4 EVERETT 15' QUADRANGLE

1579 I NE
(SNOHOMISH)



Mapped, edited, and published by the Geological Survey
Control by USGS and NOS/NOAA
Topography by photogrammetric methods from aerial
photographs taken 1952. Field checked 1953
Polyconic projection. 10,000-foot grid ticks based on Washington
coordinate system, north zone. 1000-meter Universal
Transverse Mercator grid ticks, zone 10, shown in blue
1927 North American Datum. To place on the predicted
North American Datum 1983, move the projection lines
23 meters north and 93 meters east as shown by
dashed corner ticks
There may be private inholdings within the boundaries of
the National or State reservations shown on this map



ROAD CLASSIFICATION
Heavy-duty ——— Light-duty ———
Medium-duty ——— Unimproved dirt ———
Interstate Route ——— State Route ———

BOTHELL, WASH.
SW/4 EVERETT 15' QUADRANGLE
N 4745—W 12207.5/7.5

1953
PHOTOREVISED 1981
DMA 1579 I SW—SERIES V891

THIS MAP COMPLIES WITH NATIONAL MAP ACCURACY STANDARDS
FOR SALE BY U. S. GEOLOGICAL SURVEY, DENVER, COLORADO 80225, OR RESTON, VIRGINIA 22092
A FOLDER DESCRIBING TOPOGRAPHIC MAPS AND SYMBOLS IS AVAILABLE ON REQUEST

RETURN TO:
USGS AND HISTORICAL MAP ARCHIVES

2580